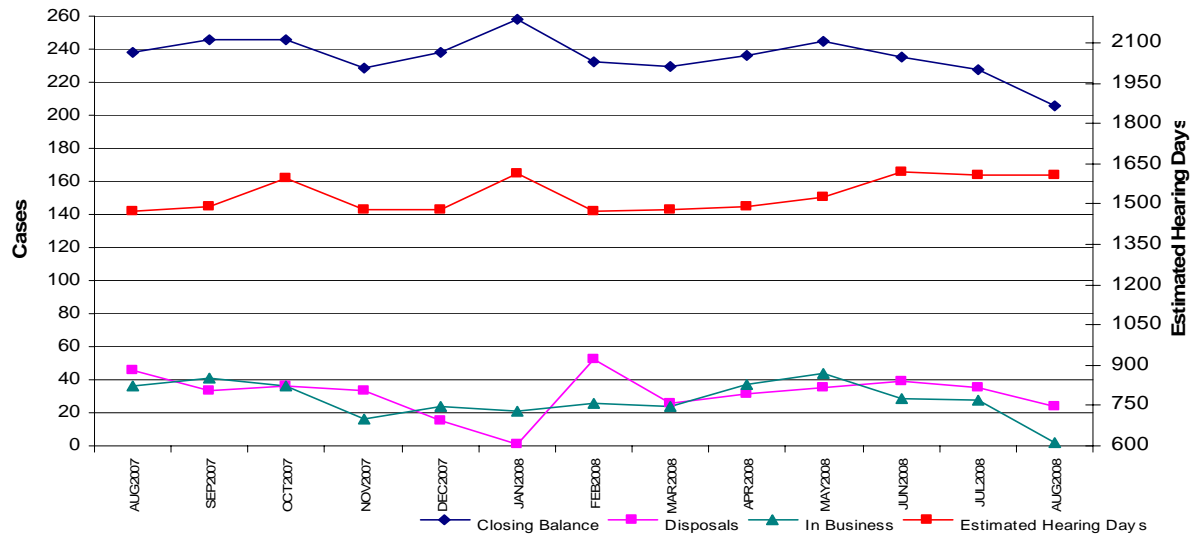


HIGH COURT WORKLOAD – AUGUST 2008

High Court: Jury Trials



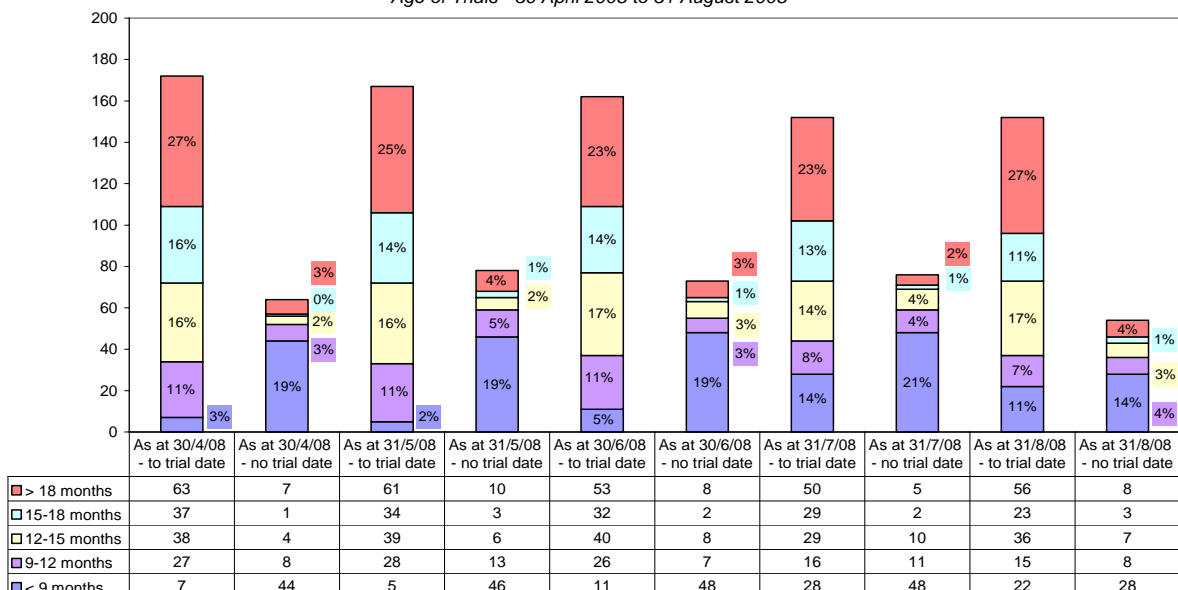
The number of trials on hand as at 31 August 2008 was 205, down 23 trials from 31 July 2008 (228) and down 13% from the 238 on hand as at 31 August 2007. The estimated hearing days required to hear these trials is 1607 days compared with 1476 as at 31 August 2007.

The total number of jury trials disposed of in August 2008 was 24, compared with 47 in August 2007. These include trials that were heard, mistrials, warrants issued and hung jury matters. There were also 16 cases transferred out that are not included as disposal.

Eighteen new trials were received during August 2008, down from 37 in August 2007. Sixteen cases were transferred out resulting in two incoming business for the month of August 2008.

[Clearance rate for August 2008 = 1:1.33]

High Court Criminal Jury Trials
Age of Trials - 30 April 2008 to 31 August 2008



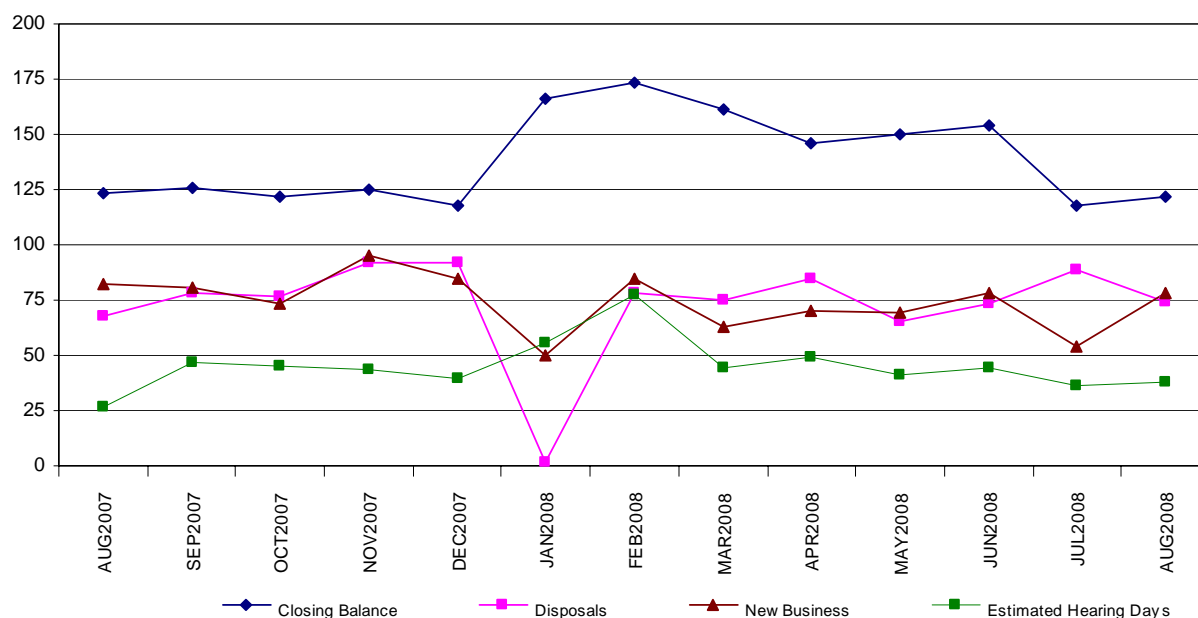
Yearly comparison of Criminal Jury Trials on hand

Circuit	August 2004	August 2005	August 2006	August 2007	August 2008
Auckland	113	109	144	181	143
Wellington	31	34	47	42	40
Christchurch	18	12	20	15	22
National Total	162	155	211	238	205

Yearly comparison of estimated sitting days for Criminal Jury Trials on hand

Circuit	August 2004	August 2005	August 2006	August 2007	August 2008
Auckland	776	837	1132	1024	1129
Wellington	128	202	294	315	250
Christchurch	137	72	123	137	222
National Total	1041	1111	1549	1476	1601

High Court: Criminal Appeals



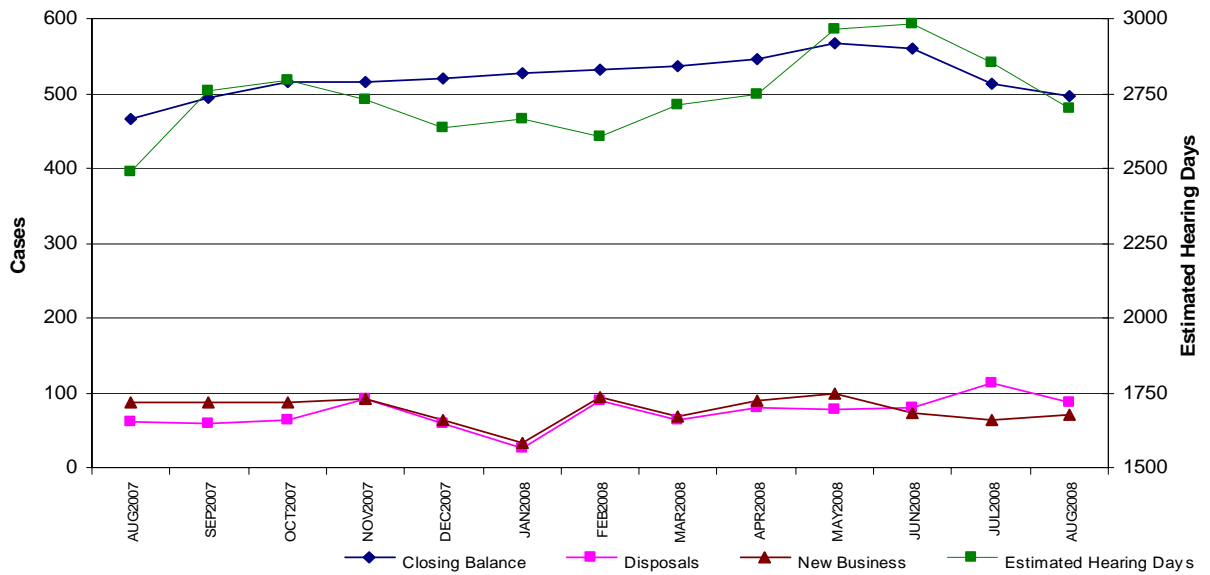
As at 31 August 2008, 122 criminal appeals were on hand, compared to 123 at 31 August 2007. The number of estimated hearing days required to dispose of the appeals on hand at the end of August 2008 was 38 days, compared with 27 days at the end of August 2007.

There were 74 disposals in August 2008, up from 68 disposals in August 2007.

There were 78 new criminal appeals received in August 2008, a decrease of 4% from 82 new appeals in August 2007.

[Clearance rate for August 2008 = 1:0.94]

High Court: Civil Proceedings



As at 31 August 2008, outstanding civil proceedings numbered 499, an increase of 7.3% from the 465 on hand as at the end of August 2007. Correspondingly, estimated hearing days required at the end of August 2008 were 2720, up from 2490 in August 2007.

New business for the month of August 2008 was 73, a decrease of 16% on the 87 in August 2007. Disposals in August 2008 numbered 87, an increase of 40% on 62 in August 2007.

[Clearance rate for August 2008 = 1:1.19]

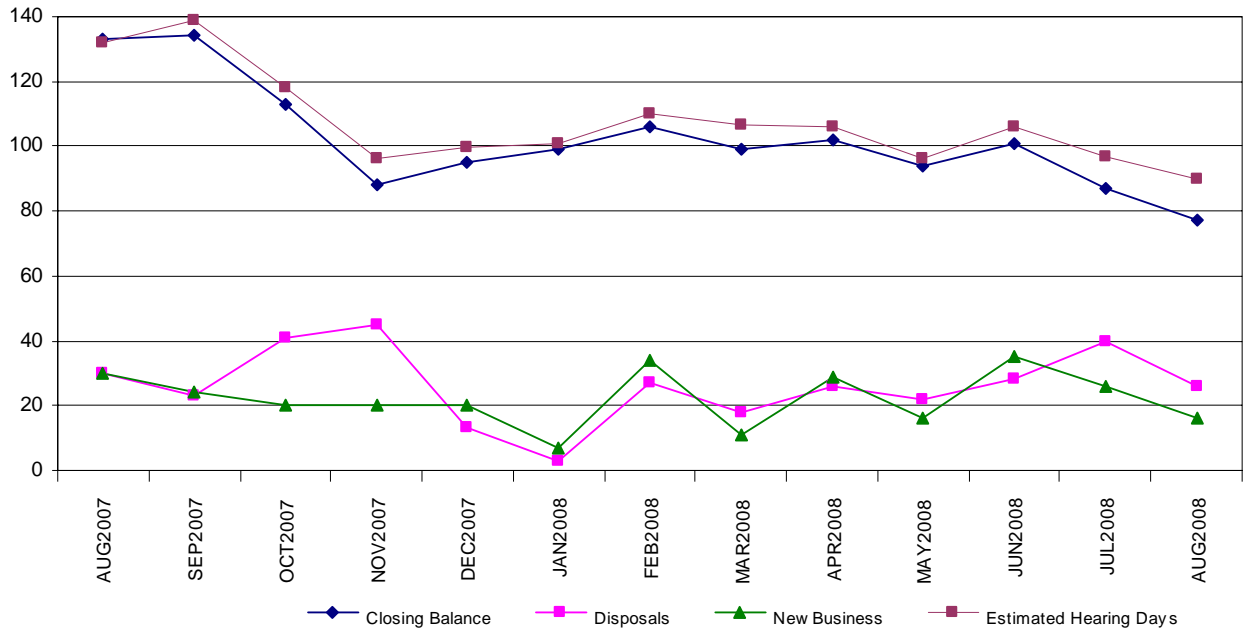
Yearly comparison of Civil Proceedings on hand by Circuit.

Circuit	August 2004	August 2005	August 2006	August 2007	August 2008
Auckland	195	243	195	302	350
Wellington	92	114	117	118	101
Christchurch	50	46	36	45	48
National Total	337	403	348	465	499

Yearly comparison of estimated sitting days for Civil Proceedings on hand

Circuit	August 2004	August 2005	August 2006	August 2007	August 2008
Auckland	976	1282	1025	1647	1942
Wellington	296	412	531	674	610
Christchurch	160	139	137	169	168
National Total	1432	1833	1693	2490	2720

High Court: Civil Appeals



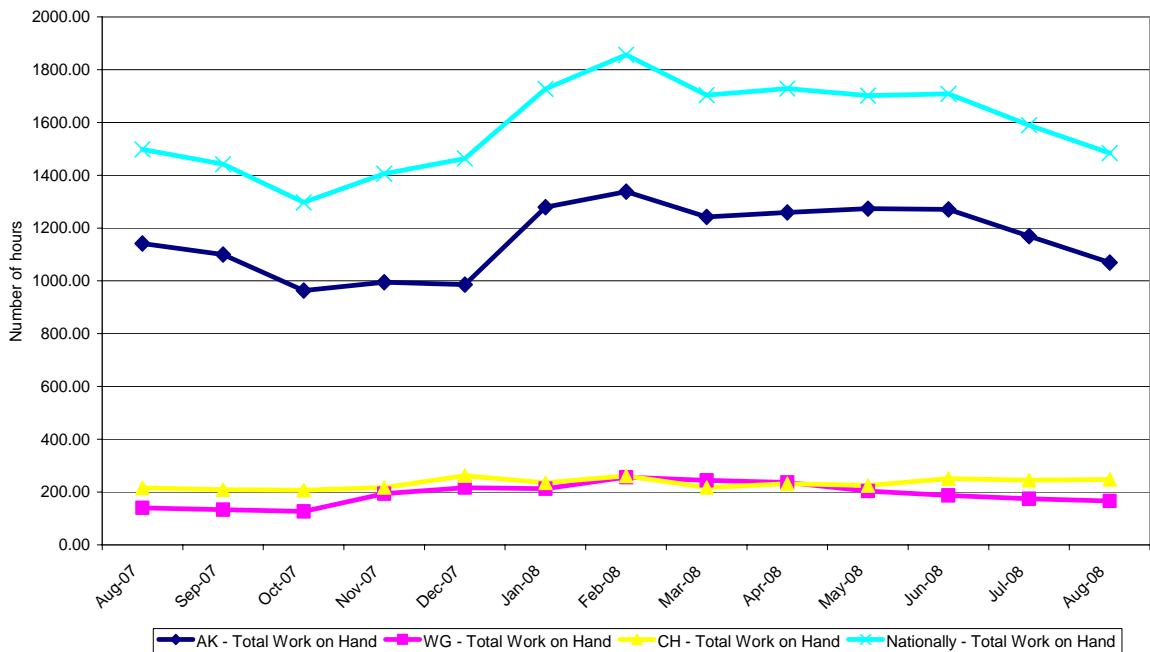
As at 31 August 2008, 77 civil appeals were on hand, a decrease of 42% from 133 as at 31 August 2007. The number of estimated hearing days required to dispose of the appeals on hand at the end of August 2008 was 92.9 days, compared with 132 days at the end of August 2007.

There were 26 disposals in August 2008, down from 30 disposals in August 2007.

There were 16 new civil appeals received in August 2008, a decrease of 46% from 30 new appeals in August 2007.

[Clearance rate for August 2008 = 1:1.62]

Workload of Associate Judges - Circuit and National - 12 months



Throughput and Outstanding Workload for High Court Criminal Jury Trials - September 2007 to August 2008																				
Court	Opening Balance	New Business	Retrials Directed	Transfers In	Warrants Executed	Number of Cases Disposed			Warrants Issued	Transfers out	Merged/ Deleted	Hung Juries	Mis-trials	Closing Balance	Age of Outstanding Cases - Months					Estimated Hearing Days
						Heard	Before the day	On the day							< 3	3-6	6-9	9-12	> 12	
Auckland	107	111	11	1	2	56	53	18	1	11	3	4	4	82	0	4	12	9	67	760
Whangarei	11	15	-	1	0	8	4	7	1	0	1	0	0	6	0	1	1	2	2	36
Rotorua	32	41	-	0	2	21	10	5	2	7	0	0	0	30	0	5	2	8	15	210
Gisborne	4	1	-	0	0	1	1	1	0	0	0	0	0	2	0	0	0	0	2	15
New Plymouth	3	6	-	0	0	4	1	1	0	0	0	0	0	3	0	2	0	1	0	20
Hamilton	24	43	2	0	0	10	17	13	0	5	2	2	0	20	2	5	7	2	4	88
Auckland Circuit	181	217	13	2	4	100	86	45	4	23	6	6	4	143	2	17	22	22	90	1,129
Wellington	20	33	-	0	0	14	12	5	0	1	3	0	0	18	1	5	8	2	2	129
Napier	9	14	1	0	0	10	5	2	0	0	1	1	0	5	0	1	0	2	2	14
Palmerston North	5	8	2	1	0	4	2	0	1	0	0	2	0	7	0	1	2	1	3	39
Wanganui	3	4	1	0	0	2	3	0	0	0	0	0	0	3	0	0	1	0	2	18
Nelson	4	5	-	1	0	3	0	0	0	0	1	0	0	6	0	2	1	1	2	40
Blenheim	1	2	-	0	0	1	1	0	0	0	0	0	0	1	0	0	0	1	0	10
Wellington Circuit	42	66	4	2	0	34	23	7	1	1	5	3	0	40	1	9	12	7	11	250
Christchurch	9	25	2	3	0	7	16	2	1	0	1	0	0	12	0	0	3	4	5	152
Timaru	1	4	-	0	0	0	1	1	0	1	0	0	0	2	0	0	1	1	0	7
Dunedin	3	9	-	0	0	0	4	0	0	2	0	0	0	6	0	0	4	0	2	55
Invercargill	2	3	-	0	0	2	1	0	0	0	0	0	0	2	0	0	1	0	1	8
Greymouth	0	-	-	0	0	0	0	0	0	0	0	0	0	0	0	0	0	0	0	0
Christchurch Circuit	15	41	2	3	0	9	22	3	1	3	1	0	0	22	0	0	9	5	8	222
NATIONAL TOTAL	238	324	19	7	4	143	131	55	6	27	12	9	4	205	3	26	43	34	109	1,601

Notes:

- 1) Transfer out refers to the transfer of another trial within the same Jurisdiction and a transfer of a trial to another Jurisdiction.
- 2) In calculating the closing balance for an individual court, the cases transferred out are considered to be disposed.
- 3) Remanded in custody status is collected at the time of committal only.



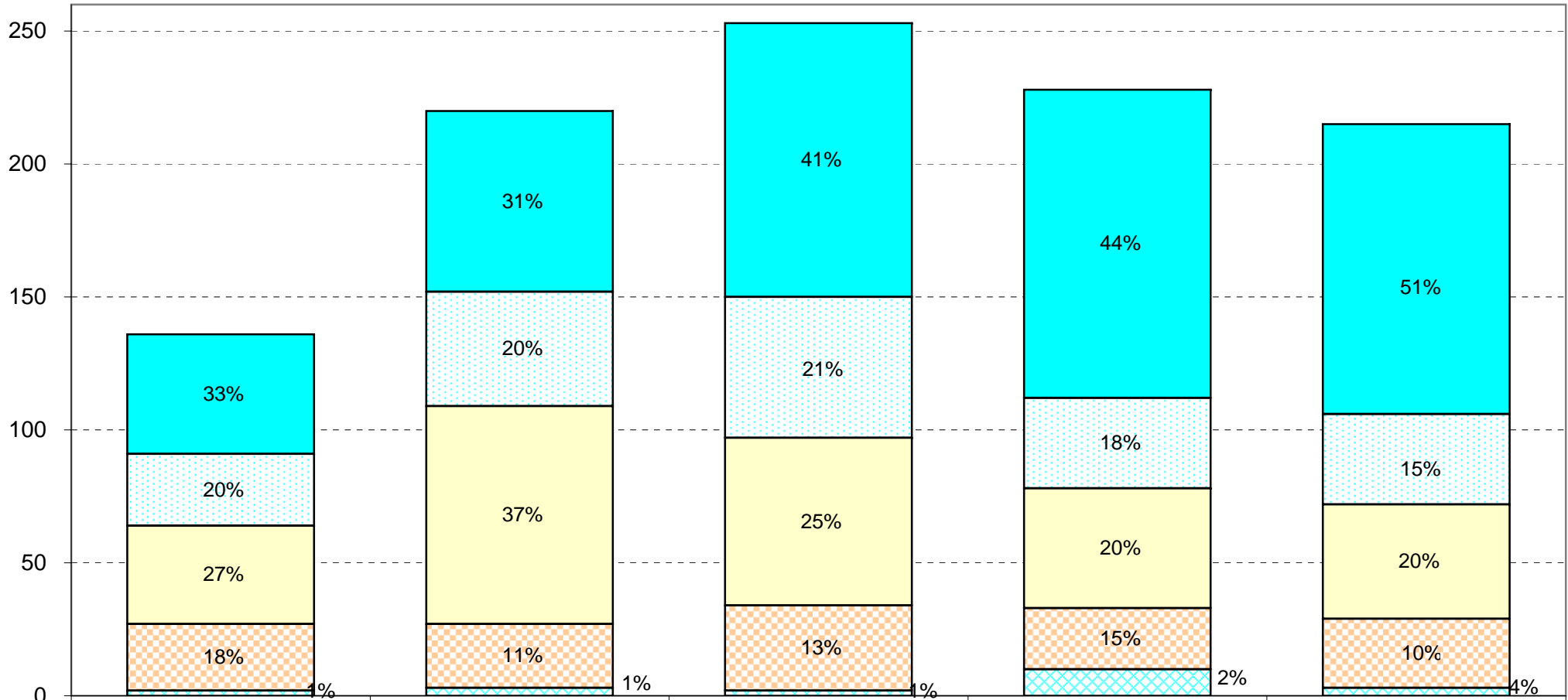
Court	Throughput and Outstanding Workload for High Court Criminal Jury Trials - August 2008 (Manual)														Age of Outstanding Cases - Months					Estimated Hearing Days
	Opening Balance	New Business	Retrials Directed	Transfers In	Warrants Executed	Number of Cases Disposed			Warrants Issued	Transfer out	Merged/ Deleted	Hung Juries	Mis-trials	Closing Balance	< 3	3-6	6-9	9-12	> 12	
						Heard	Before the day	On the day												
Auckland	84	6	0	0	0	1	3	0	0	4	0	0	0	82	0	4	12	9	67	760
Whangarei	6	1	0	0	0	1	0	0	0	0	0	0	0	6	0	1	1	2	2	36
Rotorua	39	0	0	0	0	1	1	0	0	7	0	0	0	30	0	5	2	8	15	210
Gisborne	2	0	0	0	0	0	0	0	0	0	0	0	0	2	0	0	0	0	2	15
New Plymouth	2	1	0	0	0	0	0	0	0	0	0	0	0	3	0	2	0	1	0	20
Hamilton	27	3	0	0	0	1	2	2	0	4	1	0	0	20	2	5	7	2	4	88
Auckland Circuit	160	11	0	0	0	4	6	2	0	15	1	0	0	143	2	17	22	22	90	1129
Wellington	21	2	0	0	0	0	3	0	0	0	2	0	0	18	1	5	8	2	2	129
Napier	5	0	0	0	0	0	0	0	0	0	0	0	0	5	0	1	0	2	2	14
Palmerston North	8	0	0	0	0	1	0	0	0	0	0	0	0	7	0	1	2	1	3	39
Wanganui	3	1	0	0	0	0	1	0	0	0	0	0	0	3	0	0	1	0	2	18
Nelson	5	1	0	0	0	0	0	0	0	0	0	0	0	6	0	2	1	1	2	40
Blenheim	1	0	0	0	0	0	0	0	0	0	0	0	0	1	0	0	0	1	0	10
Wellington Circuit	43	4	0	0	0	1	4	0	0	0	2	0	0	40	1	9	12	7	11	250
Christchurch	12	1	0	2	0	0	2	0	0	0	1	0	0	12	0	0	3	4	5	152
Timaru	3	0	0	0	0	0	0	0	0	1	0	0	0	2	0	0	1	1	0	7
Dunedin	8	0	0	0	0	0	1	0	0	1	0	0	0	6	0	0	4	0	2	55
Invercargill	2	0	0	0	0	0	0	0	0	0	0	0	0	2	0	0	1	0	1	8
Greymouth	0	0	0	0	0	0	0	0	0	0	0	0	0	0	0	0	0	0	0	0
Christchurch Circuit	25	1	0	2	0	0	3	0	0	2	1	0	0	22	0	0	9	5	8	222
NATIONAL TOTAL	228	16	0	2	0	5	13	2	0	17	4	0	0	205	3	26	43	34	109	1601

Notes:

- 1) Transfer out refers to the transfer of another trial within the same Jurisdiction and a transfer of a trial to another Jurisdiction.
- 2) In calculating the closing balance for an individual court, the cases transferred out are considered to be disposed.
- 3) All numbers have been manually calculated in the absence of CMS reports



High Court Criminal Jury Trials
Ages of Cases on Hand



	As at 30 June 2005	As at 30 June 2006	As at 30 June 2007	As at 31 July 2008	As at 31 August 2008
> 12 months	45	68	103	116	109
9-12 months	27	43	53	34	34
6-9 months	37	82	63	45	43
3-6 months	25	24	32	23	26
< 3 months	2	3	2	10	3

Throughput and Outstanding Workload for High Court Civil Cases - September 07 - August 08								
Court	Opening Balance	New Cases	Number of Cases Actioned			Closing Balance	Estimated Hearing Days	
			Heard	Before the day	On the day		August 2008	August 2008
Auckland	255	394	148	161	2	295	1,494	1,683
Whangarei	8	10	7	1	-	10	19	65
Rotorua	13	40	13	15	3	19	58	96
Gisborne	2	3	1	1	1	2	6	4
New Plymouth	4	9	4	3	-	1	17	7
Hamilton	20	41	11	25	1	22	54	87
Auckland Circuit	302	497	184	206	7	349	1,647	1,942
Wellington	84	167	110	62	-	84	544	534
Napier	6	13	6	4	4	6	18	33
Palmerston North	8	6	5	3	3	3	18	16
Wanganui	3	1	5	1	-	1	11	1
Nelson	8	9	6	6	-	5	28	18
Blenheim	9	2	3	6	-	2	56	8
Wellington Circuit	118	198	135	82	7	101	675	610
Christchurch	30	71	46	21	3	34	134	119
Timaru	1	1	-	-	-	2	3	5
Dunedin	10	15	5	8	2	8	24	26
Invercargill	4	7	3	3	1	4	8	17
Greymouth	0	1	1	-	-	0	-	-
Christchurch Circuit	45	95	55	32	6	48	169	167
NATIONAL TOTAL	465	790	374	320	20	498	2,491	2,719

Throughput and Outstanding Workload for High Court Civil Cases - August 2008

Court	Opening Balance	New Cases	Number of Cases Actioned			Closing Balance	Estimated Hearing Days	
			Heard	Before the day	On the day		Last Month	This Month
Auckland	309	35	27	22	-	295	1,783	1,683
Whangarei	12	-	1	1	-	10	66	65
Rotorua	15	4	-	-	-	19	74	96
Gisborne	1	1	-	-	-	2	2	4
New Plymouth	2	-	-	1	-	1	9	7
Hamilton	23	3	-	3	1	22	101	87
Auckland Circuit	362	43	28	27	1	349	2,035	1,942
Wellington	82	20	12	6	-	84	561	534
Napier	6	1	1	-	-	6	34	33
Palmerston North	3	-	-	-	-	3	16	16
Wanganui	2	-	1	-	-	1	1	1
Nelson	6	-	-	1	-	5	21	18
Blenheim	1	1	-	-	-	2	5	8
Wellington Circuit	100	22	14	7	-	101	638	610
Christchurch	38	6	8	2	-	34	130	119
Timaru	2	-	-	-	-	2	5	5
Dunedin	6	2	-	-	-	8	25	26
Invercargill	5	-	1	-	-	4	18	17
Greymouth	0	-	-	-	-	0	-	-
Christchurch Circuit	51	8	9	2	-	48	178	167
NATIONAL TOTAL	513	73	51	36	1	498	2,851	498

Throughput and Outstanding Workload for High Court Criminal Appeal Cases - September 2007 to August 2008								
Court	Opening Balance	New Cases	Number of Cases Actioned			Closing Balance	Estimated Hearing Days	
			Heard	Before the day	On the day		August 2008	August 2008
Auckland	35	125	119	17	11	13	3.0	3.0
Whangarei	8	38	37	3	3	3	1.8	0.7
Rotorua	15	103	92	13	-	13	5.5	7.0
Gisborne	2	16	8	4	-	6	0.5	1.5
New Plymouth	5	24	16	3	9	1	0.7	1.0
Hamilton	3	62	47	11	1	6	0.3	1.3
Auckland Circuit	68	368	319	51	24	42	11.80	14.50
Wellington	13	101	91	-	-	22	4.5	10.0
Napier	0	23	15	-	1	7	-	2.0
Palmerston North	8	42	32	7	2	9	1.6	2.0
Wanganui	4	24	24	1	-	3	1.0	1.0
Nelson	3	25	22	1	-	4	0.9	1.3
Blenheim	1	10	5	2	1	3	0.5	0.6
Wellington Circuit	29	225	189	11	4	48	8.5	16.9
Christchurch	12	175	162	15	0	10	3.5	3.2
Timaru	3	18	15	0	0	6	0.7	1.2
Dunedin	5	47	36	6	2	8	1.2	1.0
Invercargill	6	34	32	4	0	4	1.2	0.8
Greymouth	0	12	5	7	0	0	-	-
Christchurch Circuit	26	286	250	32	2	28	6.6	6.2
NATIONAL TOTAL	123	879	758	94	30	118	26.9	37.6

Throughput and Outstanding Workload for High Court Criminal Appeals - August 2008								
Court	Opening Balance	New Cases	Number of Cases Actioned			Closing Balance	Estimated Hearing Days	
			Heard	Before the day	On the day		Last Month	This Month
Auckland	16	6	8	1	-	13	3.0	3.0
Whangarei	3	2	1	-	1	3	0.6	0.7
Rotorua	14	10	7	4	-	13	7.0	7.0
Gisborne	4	2	-	-	-	6	1.3	1.5
New Plymouth	1	2	-	-	2	1	0.3	1.0
Hamilton	3	6	2	1	-	6	0.7	1.3
Auckland Circuit	41	28	18	6	3	42	12.9	14.5
Wellington	22	12	12	-	-	22	8.5	10.0
Napier	3	6	2	-	-	7	1.0	2.0
Palmerston North	7	6	1	3	-	9	1.4	2.0
Wanganui	4	2	3	-	-	3	1.0	1.0
Nelson	4	-	-	-	-	4	1.3	1.3
Blenheim	2	1	-	-	-	3	0.4	0.6
Wellington Circuit	42	27	18	3	-	48	13.6	16.9
Christchurch	15	12	15	2	-	10	5.7	3.2
Timaru	5	3	2	-	-	6	1.3	1.2
Dunedin	8	2	1	-	1	8	1.0	1.0
Invercargill	6	2	4	-	-	4	1.2	0.8
Greymouth	1	-	1	-	-	0	1.0	-
Christchurch Circuit	35	19	23	2	1	28	10.2	6.2
NATIONAL TOTAL	118	74	59	11	4	118	36.7	37.6

Throughput and Outstanding Workload for High Court Civil & Family Appeals - September 2007 to August 2008								
Court	Opening Balance	New Cases	Number of Cases Actioned			Closing Balance	Estimated Hearing Days	
			Heard	Before the day	On the day		August 2008	August 2008
Auckland	43	90	92	17	-	24	43.5	37.0
Whangarei	2	9	6	1	-	2	2.5	1.0
Rotorua	4	16	9	2	1	8	2.5	8.5
Gisborne	0	-	-	-	-	0	-	-
New Plymouth	4	6	7	2	-	1	2.5	1.0
Hamilton	13	18	17	8	-	6	16.0	9.0
Auckland Circuit	66	139	131	30	1	41	67.0	56.5
Wellington	43	69	64	23	-	24	45.4	22.0
Napier	7	7	11	2	-	1	6.0	1.0
Palmerston North	7	5	6	5	-	1	4.5	1.0
Wanganui	2	2	1	2	-	1	1.5	2.0
Nelson	1	3	4	-	-	0	0.5	-
Blenheim	0	2	1	-	-	1	-	1.0
Wellington Circuit	60	88	87	32	-	28	57.9	27.0
Christchurch	4	22	16	3	-	7	5.0	5.8
Timaru	0	1	1	-	-	0	-	-
Dunedin	0	4	4	-	-	0	-	-
Invercargill	3	4	4	1	1	1	1.8	0.6
Greymouth	0	-	-	-	-	0	-	-
Christchurch Circuit	7	31	25	4	1	8	6.8	6.4
NATIONAL TOTAL	133	258	243	66	2	77	131.7	89.9

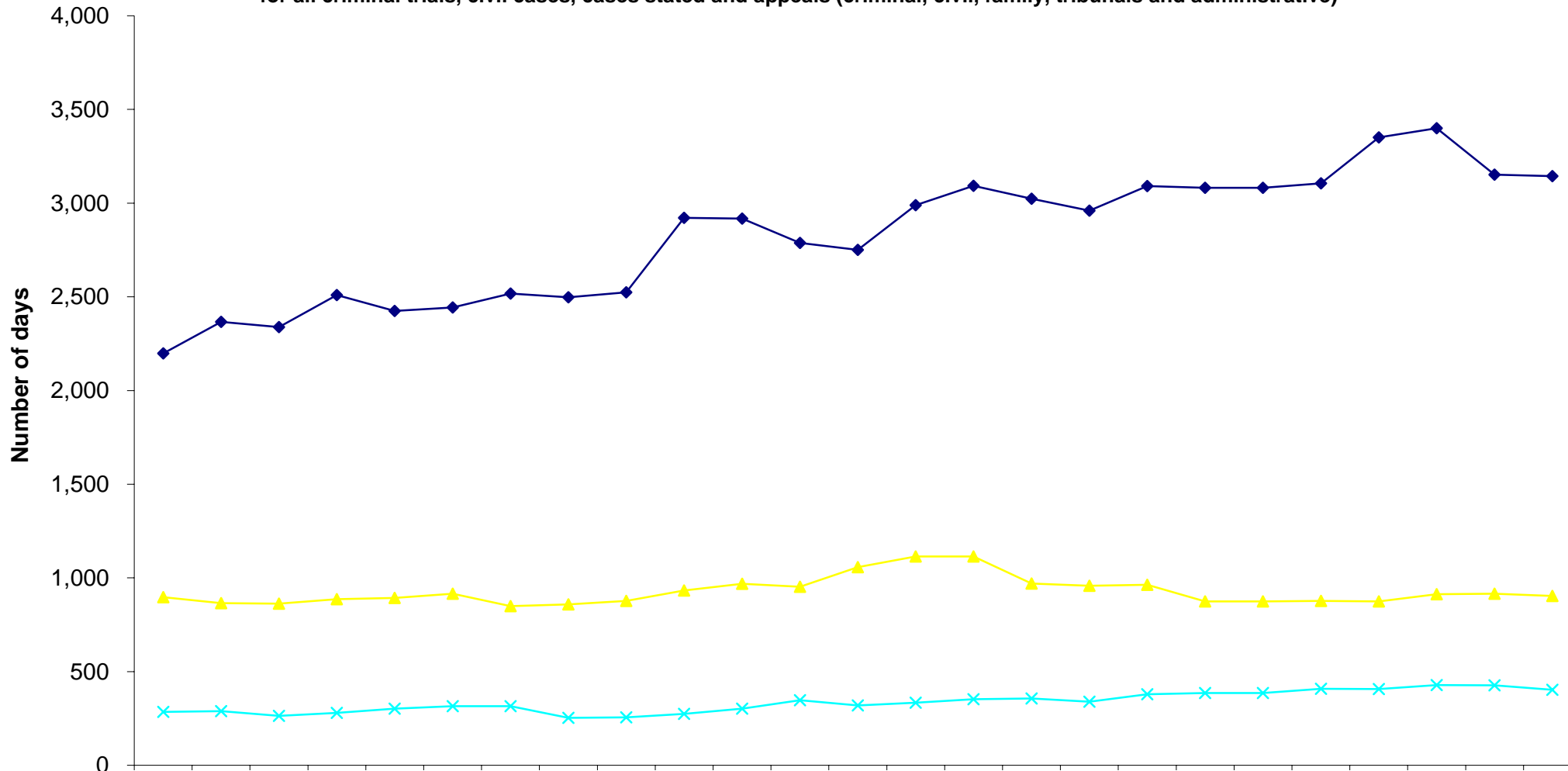
Throughput and Outstanding Workload for High Court Civil & Family Appeals - August 2008								
Court	Opening Balance	New Cases	Number of Cases Actioned			Closing Balance	Estimated Hearing Days	
			Heard	Before the day	On the day		Last Month	This Month
Auckland	31	4	11	-	-	24	42	37
Whangarei	2	-	-	-	-	2	1.0	1.0
Rotorua	5	3	-	-	-	8	6.0	9
Gisborne	0	-	-	-	-	0	-	-
New Plymouth	1	1	-	1	-	1	1.50	1.0
Hamilton	6	-	-	-	-	6	8.0	9.0
Auckland Circuit	45	8	11	1	-	41	58.0	56.5
Wellington	32	4	11	1	-	24	29.4	22.0
Napier	1	-	-	-	-	1	1.0	1.0
Palmerston North	1	-	-	-	-	1	1.0	1.0
Wanganui	1	-	-	-	-	1	2.0	2.0
Nelson	0	-	-	-	-	0	-	-
Blenheim	0	1	-	-	-	1	-	1.0
Wellington Circuit	35	5	11	1	-	28	33.4	27.0
Christchurch	5	3	1	-	-	7	4.2	5.8
Timaru	0	-	-	-	-	0	-	-
Dunedin	1	-	1	-	-	0	0.6	-
Invercargill	1	-	-	-	-	1	0.6	0.6
Greymouth	0	-	-	-	-	0	-	-
Christchurch Circuit	7	3	2	-	-	8	5.4	6.4
NATIONAL TOTAL	87	16	24	2	-	77	96.8	89.9

High Court Business On Hand Summary

Comparative Quarterly Figures for the Year Ending 30 June 2008
Comparative Monthly Figures for the Four Months to 31 August 2008

ESTIMATED SITTING DAYS								
Work on hand in estimated sitting days for all criminal trials, civil cases, cases stated and appeals (criminal, civil, family, tribunals and administrative)								
High Court	Quarterly				Months			
	Sep-07	Dec-07	Mar-08	Jun-08	May-08	Jun-08	Jul-08	Aug-08
Auckland	2,463.1	2,393.0	2,393.5	2,682.6	2,640.1	2,682.6	2,467.6	2,483.1
Whangarei	62.8	79.3	108.6	115.2	119.4	115.2	102.6	102.7
Gisborne	28.0	22.0	18.0	13.3	11.5	13.3	18.3	20.5
Rotorua	209.5	250.3	294.0	340.0	326.5	340.0	324.0	323.5
New Plymouth	33.1	34.3	27.8	22.6	23.2	22.6	18.8	29.0
Hamilton	192.8	181.4	240.0	226.2	230.3	226.2	220.2	184.8
Auckland Circuit	2,989.3	2,960.3	3,081.9	3,399.9	3,351.0	3,399.9	3,151.5	3,143.6
Wellington	817.1	680.9	636.8	701.4	656.0	701.4	705.3	695.0
Palmerston North	44.6	47.6	55.8	79.6	70.1	79.6	66.4	58.0
Napier	111.5	117.5	108.0	64.0	77.0	64.0	49.5	50.0
Wanganui	24.5	10.5	6.5	6.0	11.0	6.0	22.3	22.0
Nelson	82.3	77.7	38.5	46.9	45.2	46.9	57.3	59.3
Blenheim	33.8	24.0	29.2	15.4	15.2	15.4	15.4	19.6
Wellington Circuit	1,113.8	958.2	874.8	913.3	874.5	913.3	916.2	903.9
Christchurch	222.6	230.5	248.1	269.9	276.5	269.9	262.7	280.4
Greymouth	1.6	0.2	2.5	2.0	2.5	2.0	1.0	0.0
Dunedin	96.9	92.4	106.5	88.2	94.8	88.2	91.8	82.4
Timaru	3.5	4.1	11.5	43.2	12.7	43.2	43.3	13.2
Invercargill	9.2	11.6	16.4	25.2	19.6	25.2	27.4	26.4
Christchurch Circuit	333.8	338.8	385.0	428.5	406.1	428.5	426.2	402.4
NATIONAL TOTAL	4,436.9	4,257.3	4,341.7	4,741.7	4,631.6	4,741.7	4,493.8	4,449.9

Estimated Sitting Days
for all criminal trials, civil cases, cases stated and appeals (criminal, civil, family, tribunals and administrative)



	Aug-06	Sep-06	Oct-06	Nov-06	Dec-06	Jan-07	Feb-07	Mar-07	Apr-07	May-07	Jun-07	Jul-07	Aug-07	Sep-07	Oct-07	Nov-07	Dec-07	Jan-08	Feb-08	Mar-08	Apr-08	May-08	Jun-08	Jul-08	Aug-08
◆ Auckland Circuit	2,197.6	2,366.3	2,339.0	2,510.0	2,424.8	2,443.4	2,517.0	2,497.3	2,524.0	2,921.3	2,917.6	2,787.2	2,750.9	2,989.3	3,093.0	3,023.9	2,960.3	3,091.2	3,081.9	3,081.9	3,105.3	3,351.0	3,399.9	3,151.5	3,143.6
▲ Wellington Circuit	897.6	865.1	862.4	886.3	892.8	915.2	849.3	858.3	877.6	932.3	968.9	952.4	1,056.8	1,113.8	1,114.2	970.2	958.2	963.0	874.8	874.8	877.6	874.5	913.3	916.2	903.9
× Christchurch Circuit	284.4	289.0	264.3	279.7	301.9	315.2	315.4	253.1	256.3	274.2	302.0	347.6	319.6	333.8	352.7	356.3	338.8	379.3	385.0	385.0	408.7	406.1	428.5	426.2	402.4