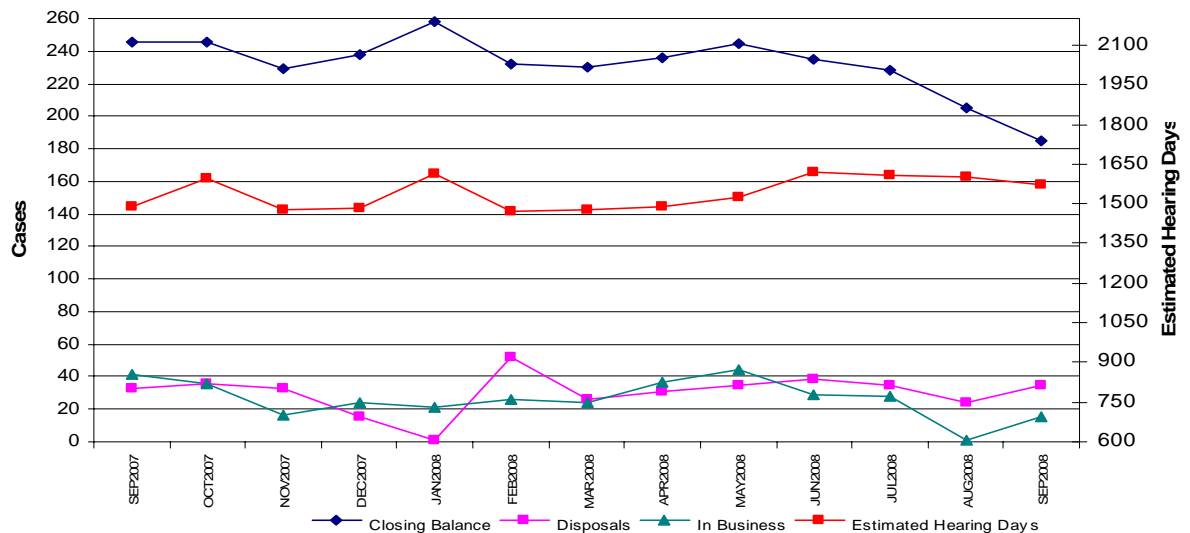


HIGH COURT WORKLOAD – SEPTEMBER 2008

High Court: Jury Trials



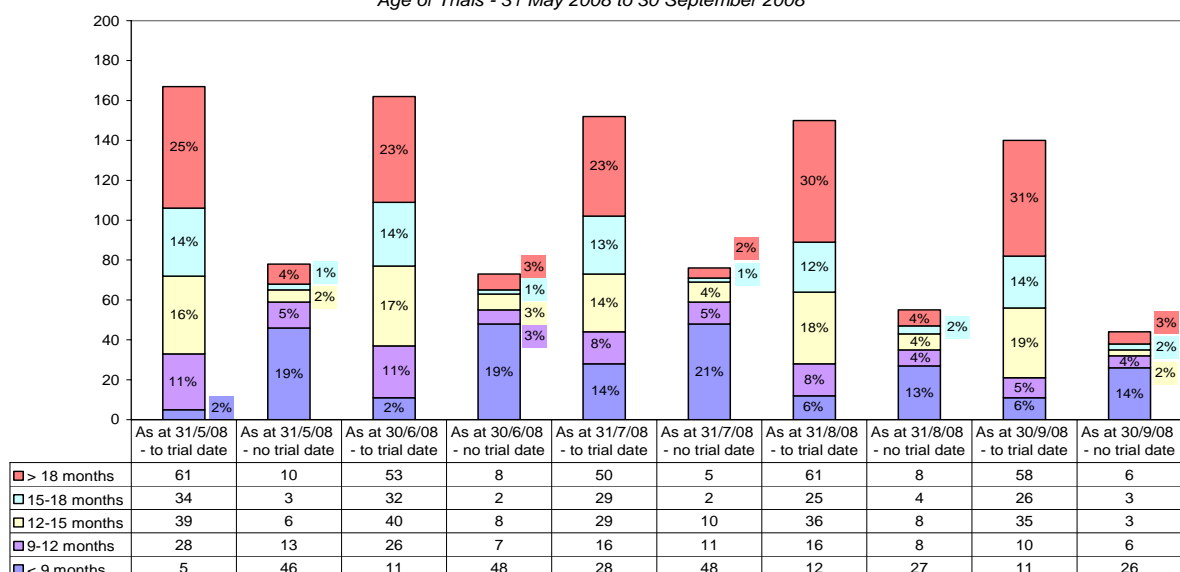
The number of trials on hand as at 30 September 2008 was 185, down 20 trials from 31 August 2008 (205) and down 25% from the 246 trials on hand as at 30 September 2007. The estimated hearing days required to hear these trials is 1572 days compared with 1491 as at 30 September 2007.

The total number of jury trials disposed of in September 2008 was 35, compared with 33 in September 2007. These include trials that were heard, mistrials, warrants issued and hung juries. A further five cases were transferred out of the High Court.

Sixteen new trials received during September 2008, down 61% from the 41 trials received in September 2007. Five cases were transferred out resulting in 15 incoming business for the month of September 2008.

[Clearance rate for September 2008 = 1:2.3]

High Court Criminal Jury Trials
Age of Trials - 31 May 2008 to 30 September 2008



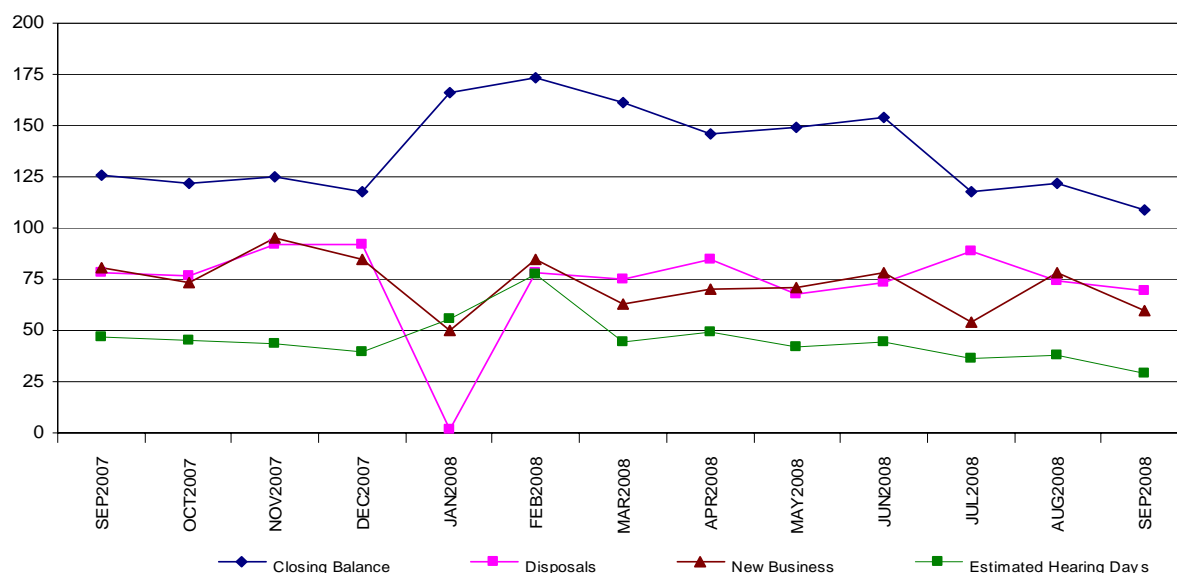
Yearly comparison of Criminal Jury Trials on hand

Circuit	September 2004	September 2005	September 2006	September 2007	September 2008
Auckland	105	111	149	182	135
Wellington	27	38	49	50	33
Christchurch	24	14	18	14	17
National Total	156	163	216	246	185

Yearly comparison of estimated sitting days for Criminal Jury Trials on hand

Circuit	September 2004	September 2005	September 2006	September 2007	September 2008
Auckland	748	837	1213	1038	1148
Wellington	110	230	296	311	225
Christchurch	125	90	109	142	199
National Total	983	1158	1610	1491	1572

High Court: Criminal Appeals



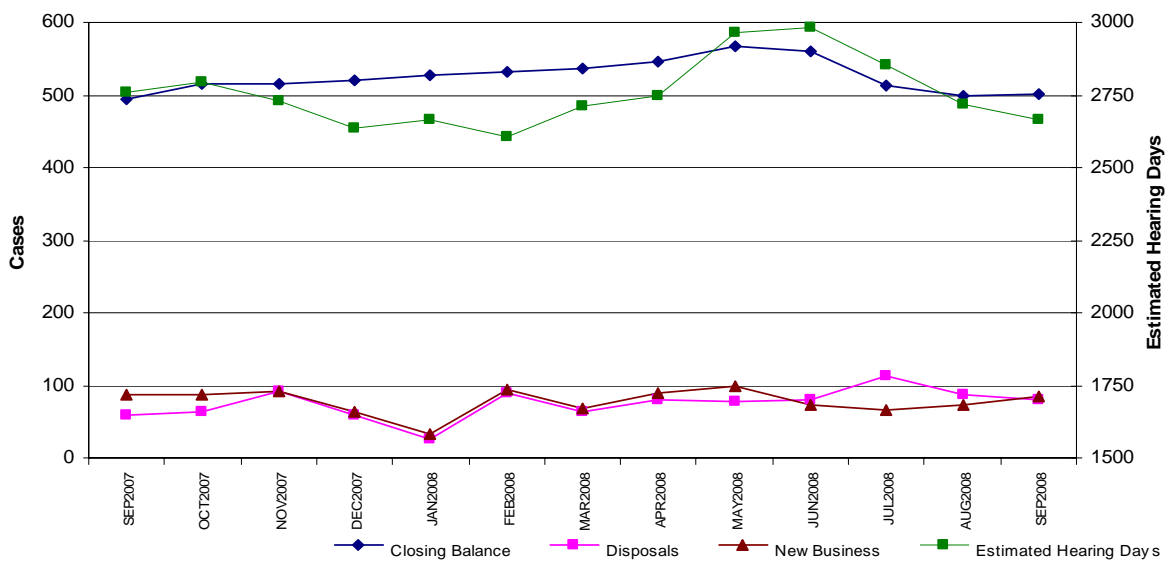
As at 30 September 2008, 109 criminal appeals were on hand, compared to 126 at 30 September 2007. The number of estimated hearing days required to dispose of the appeals on hand at the end of September 2008 was 29 days, compared with 46 days at the end of September 2007.

There were 69 disposals in September 2008, down from 77 disposals in September 2007.

There were 60 new criminal appeals received in September 2008, a decrease of 26% from 81 new appeals in September 2007.

[Clearance rate for September 2008 = 1:1.15]

High Court: Civil Proceedings



As at 30 September 2008, outstanding civil proceedings numbered 501, an increase of 1% from the 494 on hand as at the end of September 2007. Correspondingly, estimated hearing days required at the end of September 2008 were 2667, down from 2759 in September 2007.

New business for the month of September 2008 was 84, a decrease of 4% on the 88 in September 2007. Disposals in September 2008 numbered 81, an increase of 37% on 59 in September 2007.

[Clearance rate for September 2008 = 1:0.96]

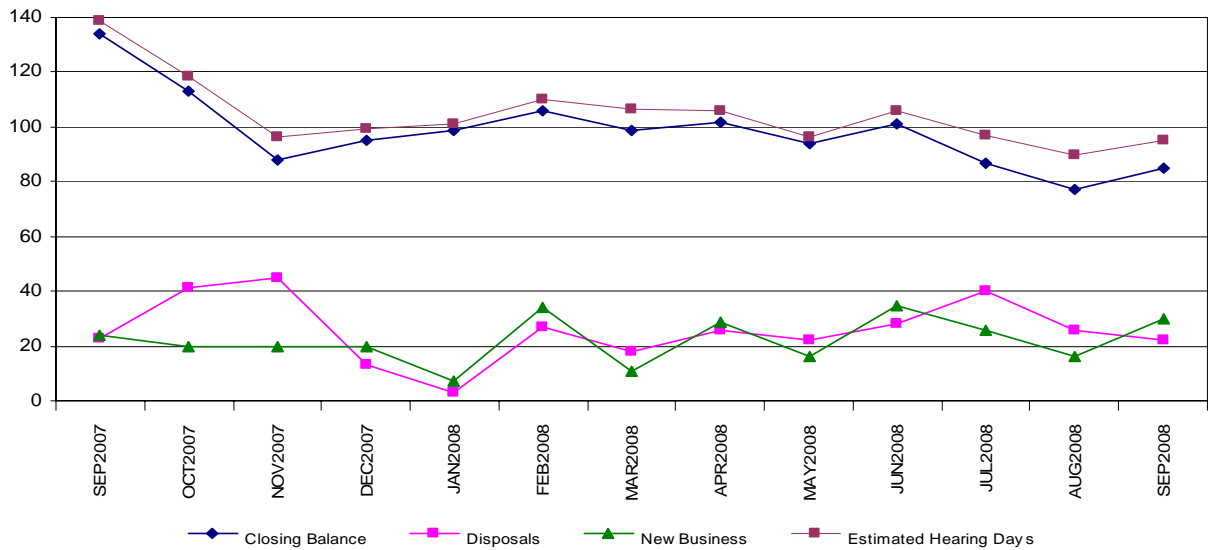
Yearly comparison of Civil Proceedings on hand

Circuit	September 2004	September 2005	September 2006	September 2007	September 2008
Auckland	215	239	214	322	350
Wellington	9	108	119	128	105
Christchurch	43	51	36	44	46
National Total	349	398	369	494	501

Yearly comparison of estimated sitting days for Civil Proceedings on hand

Circuit	September 2004	September 2005	September 2006	September 2007	September 2008
Auckland	1782	1289	1095	1844	1897
Wellington	268	360	503	735	604
Christchurch	157	135	155	179	166
National Total	2207	1784	1753	2758	2667

High Court: Civil Appeals

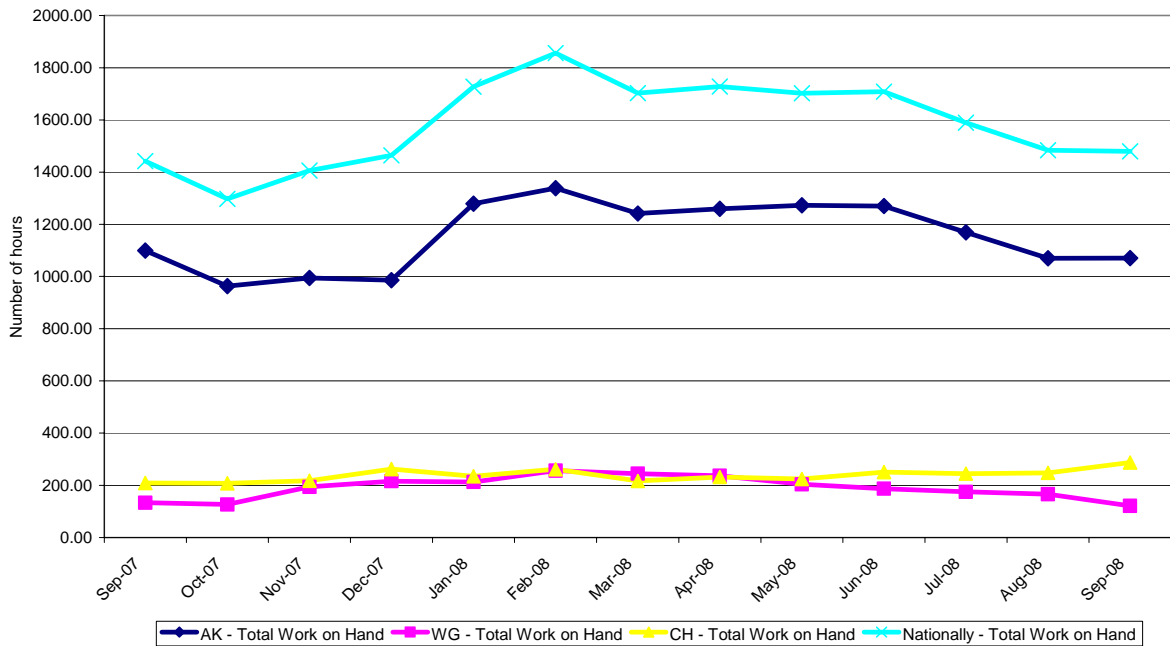


As at 30 September 2008, 85 civil appeals were on hand, a decrease of 37% from 134 as at 30 September 2007. The number of estimated hearing days required to dispose of the appeals on hand at the end of September 2008 was 95 days, compared with 139 days at the end of September 2007.

There were 22 disposals in September 2008, down from 23 disposals in September 2007. There were 30 new civil appeals received in September 2008, an increase of 25% from 24 new appeals in September 2007.

[Clearance rate for September 2008 = 1:0.73]

Workload of Associate Judges - Circuit and National - September 2007 to September 2008



Throughput and Outstanding Workload for High Court Criminal Jury Trials - October 2007 to September 2008																				
Court	Opening Balance	New Business	Retrials Directed	Transfers In	Warrants Executed	Number of Cases Disposed			Warrants Issued	Transfers out	Merged/ Deleted	Hung Juries	Mis-trials	Closing Balance	Age of Outstanding Cases - Months					Estimated Hearing Days
						Heard	Before the day	On the day							< 3	3-6	6-9	9-12	> 12	
Auckland	109	101	10	1	2	53	51	18	1	10	2	4	5	79	0	4	10	11	54	771
Whangarei	11	13	-	1	0	6	4	6	2	0	1	0	0	6	0	1	2	1	2	37
Rotorua	32	38	1	0	2	22	11	4	1	7	0	1	0	27	0	5	4	5	13	222
Gisborne	4	2	-	0	0	1	1	1	0	0	0	0	0	3	0	1	0	0	2	20
New Plymouth	3	6	-	0	0	4	1	1	0	0	0	0	0	3	0	1	1	1	0	20
Hamilton	23	39	4	0	0	10	16	11	0	6	2	3	1	17	1	0	14	0	2	78
Auckland Circuit	182	199	15	2	4	96	84	41	4	23	5	8	6	135	1	12	31	18	73	1,148
Wellington	25	27	-	0	0	14	12	9	0	1	3	0	0	13	1	4	4	2	2	111
Napier	12	12	1	0	0	12	6	2	0	0	1	1	0	3	0	1	0	0	2	10
Palmerston North	6	9	2	1	0	6	3	0	1	0	0	2	0	6	0	0	2	2	2	33
Wanganui	2	4	1	0	0	1	3	0	0	0	0	0	0	3	0	0	1	0	2	18
Nelson	4	5	-	1	0	3	0	0	0	0	1	0	0	6	0	1	2	1	2	40
Blenheim	1	3	-	0	0	1	1	0	0	0	0	0	0	2	0	0	1	0	1	13
Wellington Circuit	50	60	4	2	0	37	25	11	1	1	5	3	0	33	1	6	10	5	11	225
Christchurch	10	23	2	3	0	7	16	3	1	2	1	0	0	8	0	0	2	1	5	136
Timaru	0	5	-	0	0	0	0	1	0	1	0	0	0	3	0	0	2	1	0	12
Dunedin	3	9	-	0	0	0	5	0	0	3	0	0	0	4	0	0	1	1	2	43
Invercargill	1	3	-	0	0	1	1	0	0	0	0	0	0	2	0	0	1	0	1	8
Greymouth	0	-	-	0	0	0	0	0	0	0	0	0	0	0	0	0	0	0	0	0
Christchurch Circuit	14	40	2	3	0	8	22	4	1	6	1	0	0	17	0	0	6	3	8	199
NATIONAL TOTAL	246	299	21	7	4	141	131	56	6	30	11	11	6	185	2	18	47	26	92	1,572

Notes:

- 1) Transfer out refers to the transfer of another trial within the same Jurisdiction and a transfer of a trial to another Jurisdiction.
- 2) In calculating the closing balance for an individual court, the cases transferred out are considered to be disposed.
- 3) Remanded in custody status is collected at the time of committal only.



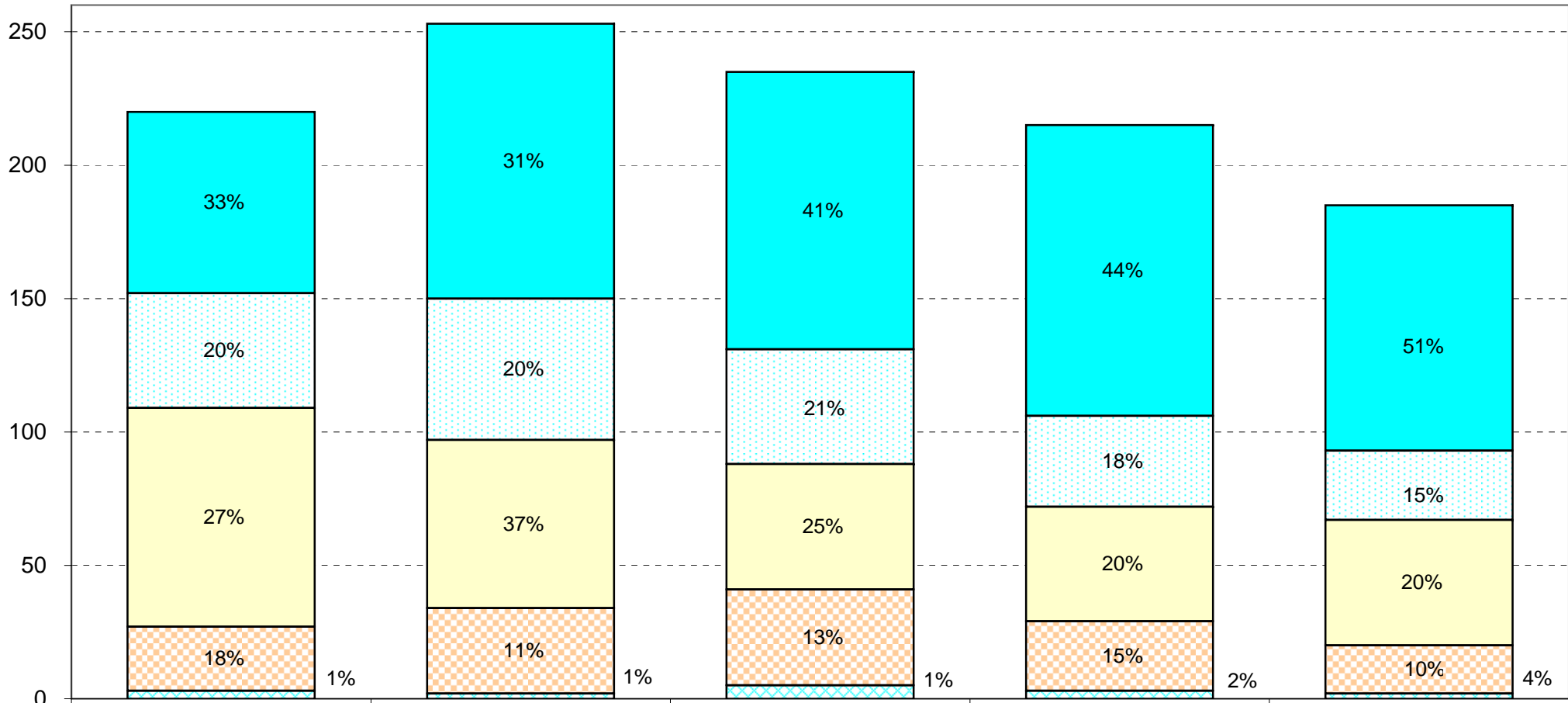
Court	Throughput and Outstanding Workload for High Court Criminal Jury Trials - #REF! (Manual)														Estimated Hearing Days					
	Opening Balance	New Business	Retrials Directed	Transfers In	Warrants Executed	Number of Cases Disposed			Warrants Issued	Transfer out	Merged/ Deleted	Hung Juries	Mis-trials	Closing Balance		Age of Outstanding Cases - Months				
						Heard	Before the day	On the day								< 3	3-6	6-9	9-12	> 12
Auckland	82	6	1	0	0	3	3	2	0	1	0	0	1	79	0	4	10	11	54	771
Whangarei	6	1	0	0	0	0	0	0	1	0	0	0	0	6	0	1	2	1	2	37
Rotorua	30	2	1	0	0	3	2	0	0	0	0	1	0	27	0	5	4	5	13	222
Gisborne	2	1	0	0	0	0	0	0	0	0	0	0	0	3	0	1	0	0	2	20
New Plymouth	3	0	0	0	0	0	0	0	0	0	0	0	0	3	0	1	1	1	0	20
Hamilton	20	1	2	0	0	1	2	0	0	1	0	1	1	17	1	0	14	0	2	78
Auckland Circuit	143	11	4	0	0	7	7	2	1	2	0	2	2	135	1	12	31	18	73	1148
Wellington	18	0	0	0	0	1	0	4	0	0	0	0	0	13	1	4	4	2	2	111
Napier	5	1	0	0	0	2	1	0	0	0	0	0	0	3	0	1	0	0	2	10
Palmerston North	7	2	0	0	0	2	1	0	0	0	0	0	0	6	0	0	2	2	2	33
Wanganui	3	0	0	0	0	0	0	0	0	0	0	0	0	3	0	0	1	0	2	18
Nelson	6	0	0	0	0	0	0	0	0	0	0	0	0	6	0	1	2	1	2	40
Blenheim	1	1	0	0	0	0	0	0	0	0	0	0	0	2	0	0	1	0	1	13
Wellington Circuit	40	4	0	0	0	5	2	4	0	0	0	0	0	33	1	6	10	5	11	225
Christchurch	12	0	0	0	0	0	1	1	0	2	0	0	0	8	0	0	2	1	5	136
Timaru	2	1	0	0	0	0	0	0	0	0	0	0	0	3	0	0	2	1	0	12
Dunedin	6	0	0	0	0	0	1	0	0	1	0	0	0	4	0	0	1	1	2	43
Invercargill	2	0	0	0	0	0	0	0	0	0	0	0	0	2	0	0	1	0	1	8
Greymouth	0	0	0	0	0	0	0	0	0	0	0	0	0	0	0	0	0	0	0	0
Christchurch Circuit	22	1	0	0	0	0	2	1	0	3	0	0	0	17	0	0	6	3	8	199
NATIONAL TOTAL	205	16	4	0	0	12	11	7	1	5	0	2	2	185	2	18	47	26	92	1572

Notes:

- 1) Transfer out refers to the transfer of another trial within the same Jurisdiction and a transfer of a trial to another Jurisdiction.
- 2) In calculating the closing balance for an individual court, the cases transferred out are considered to be disposed.
- 3) All numbers have been manually calculated in the absence of CMS reports



High Court Criminal Jury Trials
Ages of Cases on Hand



	As at 30 June 2006	As at 30 June 2007	As at 30 June 2008	As at 31 August 2008	As at 30 September 2008
> 12 months	68	103	104	109	92
9-12 months	43	53	43	34	26
6-9 months	82	63	47	43	47
3-6 months	24	32	36	26	18
< 3 months	3	2	5	3	2

Throughput and Outstanding Workload for High Court Civil Cases - October 07 - September 08								
Court	Opening Balance	New Cases	Number of Cases Actioned			Closing Balance	Estimated Hearing Days	
			Heard	Before the day	On the day		September 2007	September 2008
Auckland	276	392	156	176	2	291	1,687	1,610
Whangarei	7	12	6	2	-	11	15	53
Rotorua	13	41	14	16	2	19	63	108
Gisborne	2	3	1	1	1	2	6	3
New Plymouth	4	11	4	3	-	3	17	13
Hamilton	20	45	11	27	1	24	57	110
Auckland Circuit	322	504	192	225	6	350	1,844	1,897
Wellington	94	162	114	62	-	85	614	510
Napier	10	10	8	3	4	6	33	34
Palmerston North	3	6	2	3	2	2	11	15
Wanganui	3	2	5	1	-	2	11	2
Nelson	11	5	5	6	-	5	38	18
Blenheim	7	5	1	6	-	5	29	26
Wellington Circuit	128	190	135	81	6	105	735	604
Christchurch	30	71	46	18	3	37	148	127
Timaru	1	1	-	1	-	1	3	2
Dunedin	9	13	6	8	2	4	25	20
Invercargill	3	7	3	2	1	4	3	17
Greymouth	1	-	1	-	-	0	1	-
Christchurch Circuit	44	92	56	29	6	46	180	166
NATIONAL TOTAL	494	786	383	335	18	501	2,759	2,667

Throughput and Outstanding Workload for High Court Civil Cases - September 2008								
Court	Opening Balance	New Cases	Number of Cases Actioned			Closing Balance	Estimated Hearing Days	
			Heard	Before the day	On the day		Last Month	This Month
Auckland	295	40	16	28	-	291	1,683	1,610
Whangarei	10	2	-	1	-	11	65	53
Rotorua	19	4	3	1	-	19	96	108
Gisborne	2	-	-	-	-	2	4	3
New Plymouth	1	2	-	-	-	3	7	13
Hamilton	22	5	-	3	-	24	87	110
Auckland Circuit	349	53	19	33	-	350	1,942	1,897
Wellington	84	18	12	5	-	85	534	510
Napier	6	2	2	-	-	6	33	34
Palmerston North	3	-	1	-	-	2	16	15
Wanganui	1	1	-	-	-	2	1	2
Nelson	5	-	-	-	-	5	18	18
Blenheim	2	3	-	-	-	5	8	26
Wellington Circuit	101	24	15	5	-	105	610	604
Christchurch	34	7	3	1	-	37	119	127
Timaru	2	-	-	1	-	1	5	2
Dunedin	8	-	3	1	-	4	26	20
Invercargill	4	-	-	-	-	4	17	17
Greymouth	0	-	-	-	-	0	-	-
Christchurch Circuit	48	7	6	3	-	46	167	166
NATIONAL TOTAL	498	84	40	41	-	501	2,719	501

Throughput and Outstanding Workload for High Court Criminal Appeal Cases - October 2007 to September 2008								
Court	Opening Balance	New Cases	Number of Cases Actioned			Closing Balance	Estimated Hearing Days	
			Heard	Before the day	On the day		September 2007	September 2008
Auckland	37	115	113	16	10	13	22.0	0.3
Whangarei	4	38	30	3	3	6	0.8	2.0
Rotorua	12	106	89	12	-	17	4.5	5.5
Gisborne	4	14	8	4	-	6	1.0	1.1
New Plymouth	4	26	16	2	8	4	0.6	0.9
Hamilton	7	60	47	11	1	8	1.3	1.8
Auckland Circuit	68	359	303	48	22	54	30.20	11.60
Wellington	15	97	100	-	-	11	4.0	4.0
Napier	2	22	20	1	2	1	0.5	0.5
Palmerston North	8	41	33	7	2	7	1.8	1.6
Wanganui	6	20	20	1	-	5	2.0	1.0
Nelson	5	27	22	3	-	6	1.9	1.5
Blenheim	1	9	7	2	-	1	0.3	0.4
Wellington Circuit	37	216	202	14	4	31	10.5	9.0
Christchurch	7	177	153	15	0	16	2.2	5.2
Timaru	1	18	19	0	0	0	0.5	-
Dunedin	3	43	33	8	2	3	0.7	1.4
Invercargill	9	34	34	4	0	5	1.6	1.6
Greymouth	1	11	5	7	0	0	1.0	-
Christchurch Circuit	21	283	244	34	2	24	6.0	8.2
NATIONAL TOTAL	126	858	749	96	28	109	46.7	28.8

Throughput and Outstanding Workload for High Court Criminal Appeals - September 2008								
Court	Opening Balance	New Cases	Number of Cases Actioned			Closing Balance	Estimated Hearing Days	
			Heard	Before the day	On the day		Last Month	This Month
Auckland	13	-	-	-	-	13	3.0	0.3
Whangarei	3	3	-	-	-	6	0.7	2.0
Rotorua	13	15	11	-	-	17	7.0	5.5
Gisborne	6	-	-	-	-	6	1.5	1.1
New Plymouth	1	3	-	-	-	4	1.0	0.9
Hamilton	6	5	3	-	-	8	1.3	1.8
Auckland Circuit	42	26	14	-	-	54	14.5	11.6
Wellington	22	5	16	-	-	11	10.0	4.0
Napier	7	1	5	1	1	1	2.0	0.5
Palmerston North	9	3	5	-	-	7	2.0	1.6
Wanganui	3	2	-	-	-	5	1.0	1.0
Nelson	4	4	-	2	-	6	1.3	1.5
Blenheim	3	-	2	-	-	1	0.6	0.4
Wellington Circuit	48	15	28	3	1	31	16.9	9.0
Christchurch	10	13	6	1	-	16	3.2	5.2
Timaru	6	-	6	-	-	0	1.2	-
Dunedin	8	1	3	3	-	3	1.0	1.4
Invercargill	4	5	4	-	-	5	0.8	1.6
Greymouth	0	-	-	-	-	0	-	-
Christchurch Circuit	28	19	19	4	-	24	6.2	8.2
NATIONAL TOTAL	118	60	61	7	1	109	37.6	28.8

Throughput and Outstanding Workload for High Court Civil & Family Appeals - October 2007 to September 2008								
Court	Opening Balance	New Cases	Number of Cases Actioned			Closing Balance	Estimated Hearing Days	
			Heard	Before the day	On the day		September 2007	September 2008
Auckland	45	96	90	18	-	33	48.5	42.5
Whangarei	3	10	6	1	-	4	3.5	3.0
Rotorua	3	14	9	1	1	6	2.0	7.0
Gisborne	0	-	-	-	-	0	-	-
New Plymouth	4	7	7	2	-	2	2.5	1.5
Hamilton	14	16	17	8	-	5	19.0	8.0
Auckland Circuit	69	143	129	30	1	50	75.5	62.0
Wellington	43	72	67	25	-	22	47.4	22.0
Napier	4	7	9	1	-	1	2.5	0.5
Palmerston North	7	4	6	4	-	1	4.4	1.0
Wanganui	2	2	1	2	-	1	1.5	2.0
Nelson	2	3	4	-	-	1	1.0	0.5
Blenheim	0	3	1	-	-	2	-	1.5
Wellington Circuit	58	91	88	32	-	28	56.8	27.5
Christchurch	3	23	17	3	-	6	3.6	4.8
Timaru	0	1	1	-	-	0	-	-
Dunedin	1	3	4	-	-	0	1.0	-
Invercargill	3	3	4	-	1	1	1.8	0.6
Greymouth	0	-	-	-	-	0	-	-
Christchurch Circuit	7	30	26	3	1	7	6.4	5.4
NATIONAL TOTAL	134	264	243	65	2	85	138.7	94.9

Throughput and Outstanding Workload for High Court Civil & Family Appeals - September 2008								
Court	Opening Balance	New Cases	Number of Cases Actioned			Closing Balance	Estimated Hearing Days	
			Heard	Before the day	On the day		Last Month	This Month
Auckland	24	15	4	2	-	33	37	43
Whangarei	2	2	-	-	-	4	1.0	3.0
Rotorua	8	-	2	-	-	6	8.5	7
Gisborne	0	-	-	-	-	0	-	-
New Plymouth	1	1	-	-	-	2	1.00	1.5
Hamilton	6	-	1	-	-	5	9.0	8.0
Auckland Circuit	41	18	7	2	-	50	56.5	62.0
Wellington	24	7	6	3	-	22	22.0	22.0
Napier	1	1	1	-	-	1	1.0	0.5
Palmerston North	1	-	-	-	-	1	1.0	1.0
Wanganui	1	-	-	-	-	1	2.0	2.0
Nelson	0	1	-	-	-	1	-	0.5
Blenheim	1	1	-	-	-	2	1.0	1.5
Wellington Circuit	28	10	7	3	-	28	27.0	27.5
Christchurch	7	2	2	1	-	6	5.8	4.8
Timaru	0	-	-	-	-	0	-	-
Dunedin	0	-	-	-	-	0	-	-
Invercargill	1	-	-	-	-	1	0.6	0.6
Greymouth	0	-	-	-	-	0	-	-
Christchurch Circuit	8	2	2	1	-	7	6.4	5.4
NATIONAL TOTAL	77	30	16	6	-	85	89.9	94.9

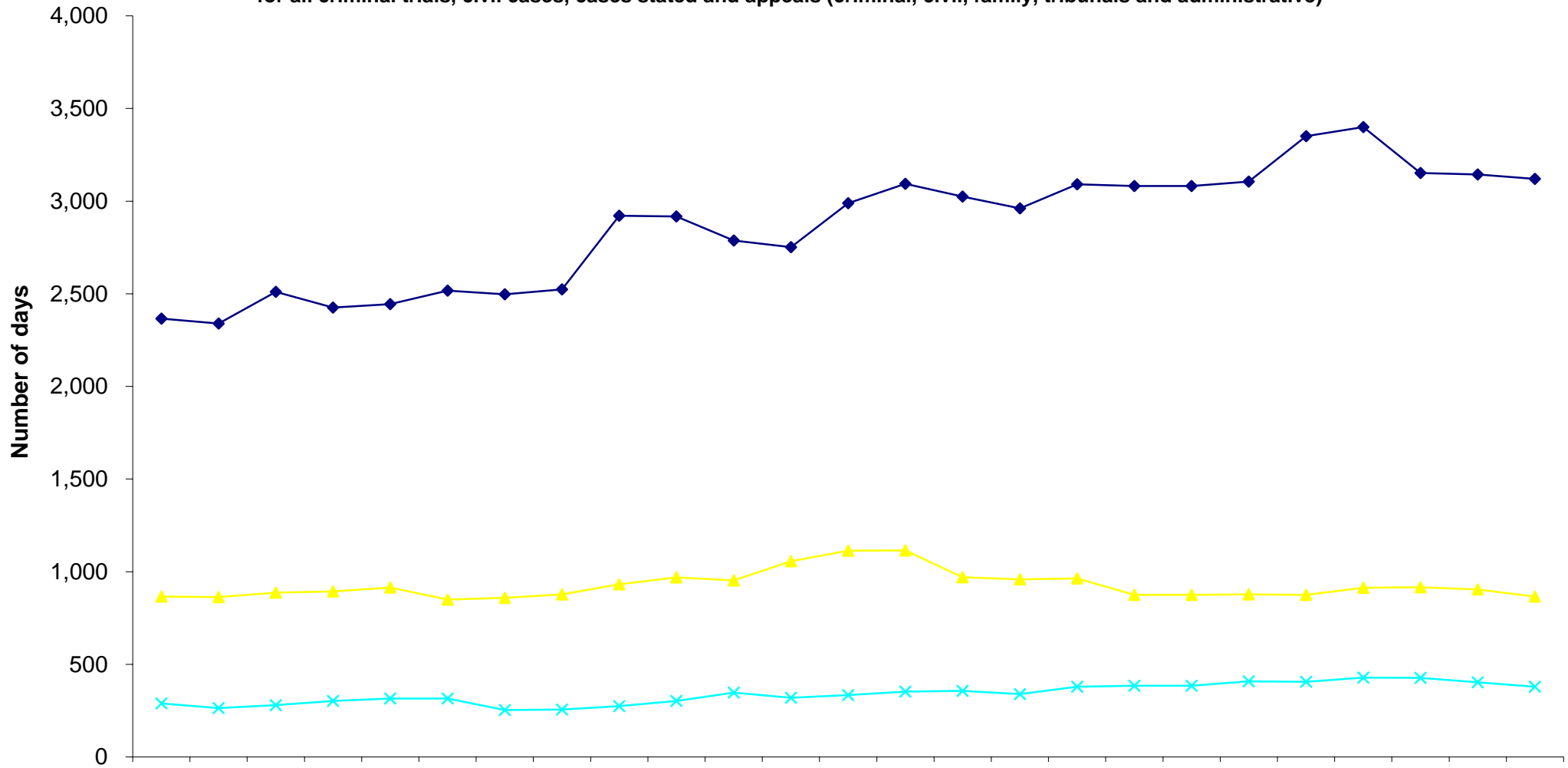
High Court Business On Hand Summary

Comparative Quarterly Figures for the Year Ending 30 September 2008
Comparative Monthly Figures for the Four Months to 30 September 2008

ESTIMATED SITTING DAYS								
Work on hand in estimated sitting days for all criminal trials, civil cases, cases stated and appeals (criminal, civil, family, tribunals and administrative)								
High Court	Quarterly				Monthly			
	Dec-07	Mar-08	Jun-08	Sep-08	Jun-08	Jul-08	Aug-08	Sep-08
Auckland	2,393.0	2,393.5	2,682.6	2,423.8	2,682.6	2,467.6	2,483.1	2,423.8
Whangarei	79.3	108.6	115.2	95.0	115.2	102.6	102.7	95.0
Gisborne	22.0	18.0	13.3	24.1	13.3	18.3	20.5	24.1
Rotorua	250.3	294.0	340.0	344.0	340.0	324.0	323.5	344.0
New Plymouth	34.3	27.8	22.6	35.4	22.6	18.8	29.0	35.4
Hamilton	181.4	240.0	226.2	197.8	226.2	220.2	184.8	197.8
Auckland Circuit	2,960.3	3,081.9	3,399.9	3,120.1	3,399.9	3,151.5	3,143.6	3,120.1
Wellington	680.9	636.8	701.4	646.9	701.4	705.3	695.0	646.9
Palmerston North	47.6	55.8	79.6	50.6	79.6	66.4	58.0	50.6
Napier	117.5	108.0	64.0	44.5	64.0	49.5	50.0	44.5
Wanganui	10.5	6.5	6.0	23.0	6.0	22.3	22.0	23.0
Nelson	77.7	38.5	46.9	60.0	46.9	57.3	59.3	60.0
Blenheim	24.0	29.2	15.4	40.9	15.4	15.4	19.6	40.9
Wellington Circuit	958.2	874.8	913.3	865.9	913.3	916.2	903.9	865.9
Christchurch	230.5	248.1	269.9	273.0	269.9	262.7	280.4	273.0
Greymouth	0.2	2.5	2.0	0.0	2.0	1.0	0.0	0.0
Dunedin	92.4	106.5	88.2	64.6	88.2	91.8	82.4	64.6
Timaru	4.1	11.5	43.2	14.0	43.2	43.3	13.2	14.0
Invercargill	11.6	16.4	25.2	27.2	25.2	27.4	26.4	27.2
Christchurch Circuit	338.8	385.0	428.5	378.8	428.5	426.2	402.4	378.8
NATIONAL TOTAL	4,257.3	4,341.7	4,741.7	4,364.8	4,741.7	4,493.8	4,449.9	4,364.8

High Court Business on Hand Summary

Estimated Sitting Days - September 2006 to September 2008
for all criminal trials, civil cases, cases stated and appeals (criminal, civil, family, tribunals and administrative)



	Sep-06	Oct-06	Nov-06	Dec-06	Jan-07	Feb-07	Mar-07	Apr-07	May-07	Jun-07	Jul-07	Aug-07	Sep-07	Oct-07	Nov-07	Dec-07	Jan-08	Feb-08	Mar-08	Apr-08	May-08	Jun-08	Jul-08	Aug-08	Sep-08
◆ Auckland Circuit	2,366.3	2,339.0	2,510.0	2,424.8	2,443.4	2,517.0	2,497.3	2,524.0	2,921.3	2,917.6	2,787.2	2,750.9	2,989.3	3,093.0	3,023.9	2,960.3	3,091.2	3,081.9	3,081.9	3,105.3	3,351.0	3,399.9	3,151.5	3,143.6	3,120.1
▲ Wellington Circuit	865.1	862.4	886.3	892.8	915.2	849.3	858.3	877.6	932.3	968.9	952.4	1,056.8	1,113.8	1,114.2	970.2	958.2	963.0	874.8	874.8	877.6	874.5	913.3	916.2	903.9	865.9
× Christchurch Circuit	289.0	264.3	279.7	301.9	315.2	315.4	253.1	256.3	274.2	302.0	347.6	319.6	333.8	352.7	356.3	338.8	379.3	385.0	385.0	408.7	406.1	428.5	426.2	402.4	378.8