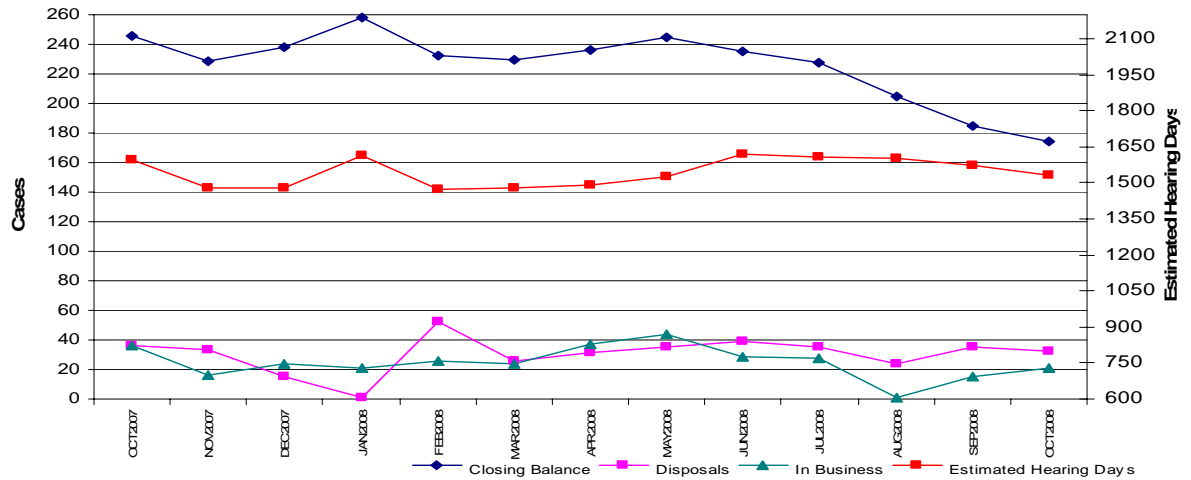


## HIGH COURT WORKLOAD – OCTOBER 2008

### High Court: Jury Trials



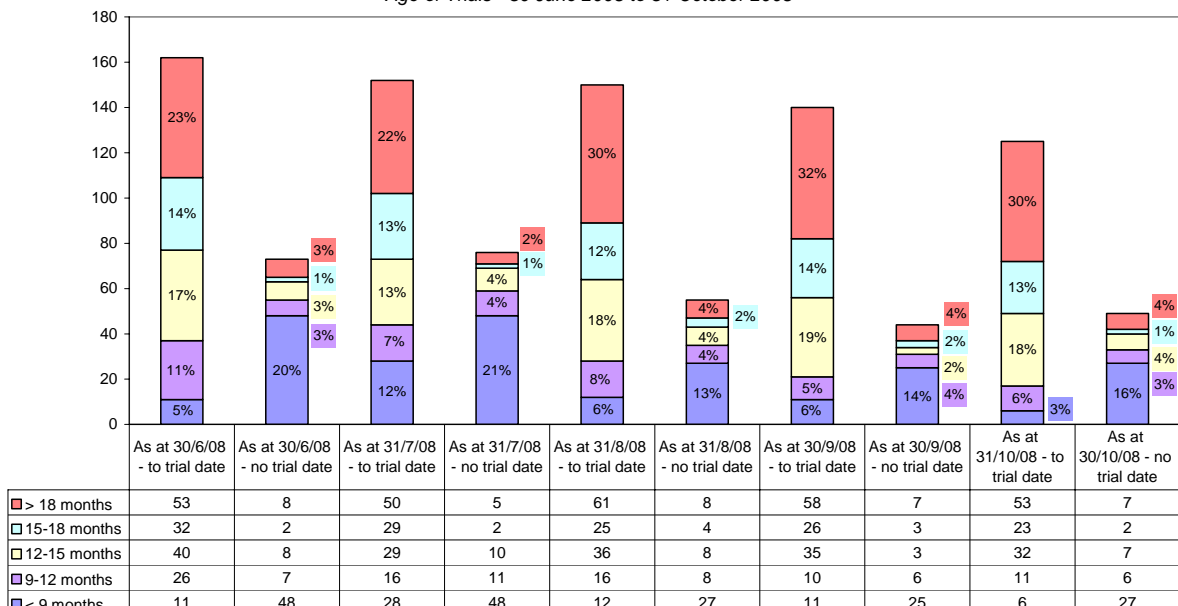
The number of trials on hand as at 31 October 2008 was 174, down 11 trials from 30 September 2008 (185) and down 29% from the 246 trials on hand as at 31 October 2007. The estimated hearing days required to hear these trials is 1530 days compared with 1595 as at 31 October 2007.

The total number of jury trials disposed of in October 2008 was 32, compared with 36 in October 2007. These include trials that were heard, mistrials, warrants issued and hung juries.

Twenty-two new committals for trial cases were received for hearing during October 2008, down 39% from the 36 trials received in October 2007. One trial was transferred out resulting in 21 incoming business for the month of October 2008.

[Clearance rate for October 2008 = 1:1.45]

**High Court Criminal Jury Trials**  
Age of Trials - 30 June 2008 to 31 October 2008



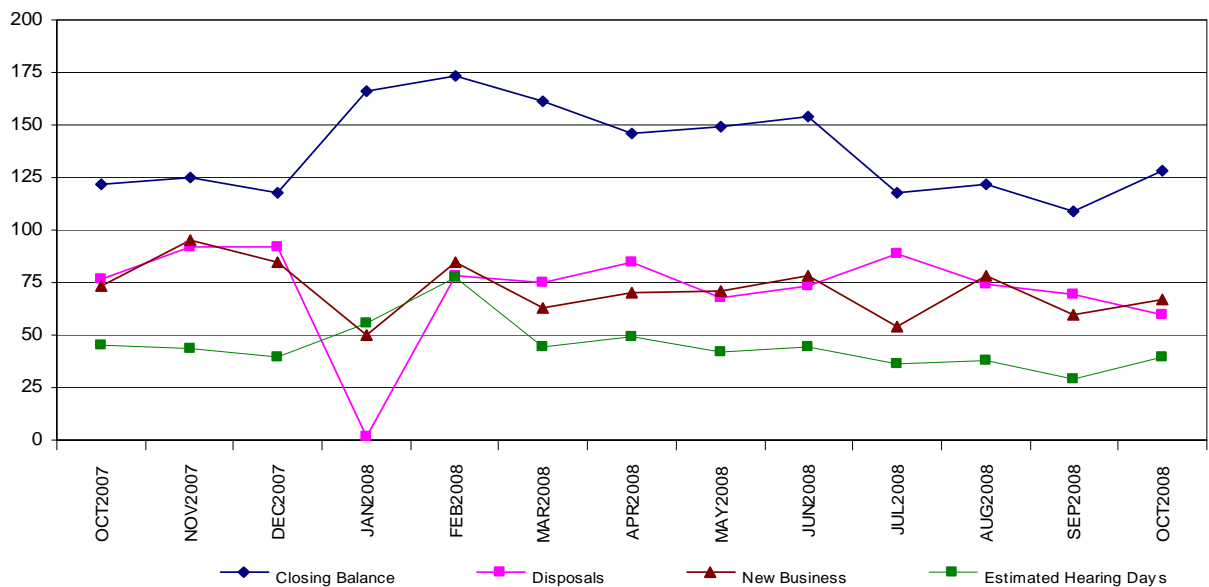
Yearly comparison of Criminal Jury Trials on hand

Circuit	October 2004	October 2005	October 2006	October 2007	October 2008
Auckland	99	119	158	180	124
Wellington	27	33	51	53	33
Christchurch	26	13	17	13	17
<b>National Total</b>	<b>152</b>	<b>165</b>	<b>226</b>	<b>246</b>	<b>174</b>

Yearly comparison of estimated sitting days for Criminal Jury Trials on hand

Circuit	October 2004	October 2005	October 2006	October 2007	October 2008
Auckland	674	861	1258	1119	1101
Wellington	120	214	300	314	231
Christchurch	126	84	89	162	198
<b>National Total</b>	<b>920</b>	<b>1159</b>	<b>1647</b>	<b>1595</b>	<b>1530</b>

**High Court: Criminal Appeals**



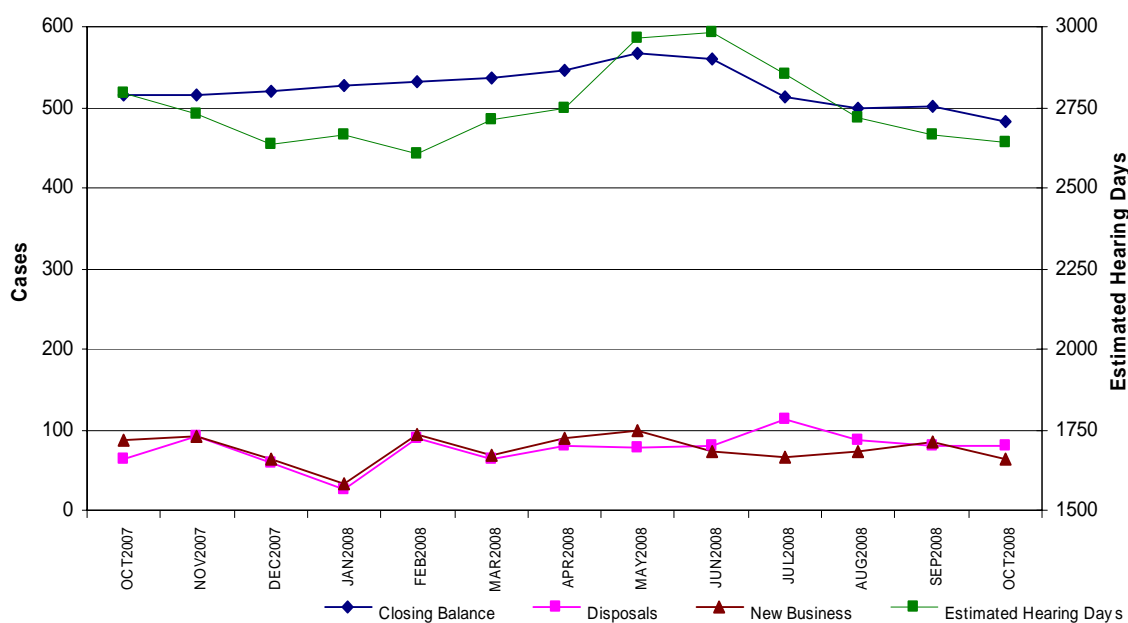
As at 31 October 2008, 128 criminal appeals were on hand, compared to 122 at 31 October 2007. The number of estimated hearing days required to dispose of the appeals on hand at the end of October 2008 was 40 days, compared with 45 days at the end of October 2007.

There were 60 disposals in October 2008, down from 77 disposals in October 2007.

There were 67 new criminal appeals received in October 2008, a decrease of 8% from 73 new appeals in October 2007.

[Clearance rate for October 2008 = 1:0.89]

### High Court: Civil Proceedings



As at 31 October 2008, outstanding civil proceedings numbered 482, a decrease of 7% from the 516 on hand as at the end of October 2007. Correspondingly, estimated hearing days required at the end of October 2008 were 2640, down from 2795 in October 2007.

New business for the month of October 2008 was 63, a decrease of 27% on the 86 in October 2007. Disposals in October 2008 numbered 81, an increase of 27% on 64 in October 2007.

[Clearance rate for October 2008 = 1:1.29]

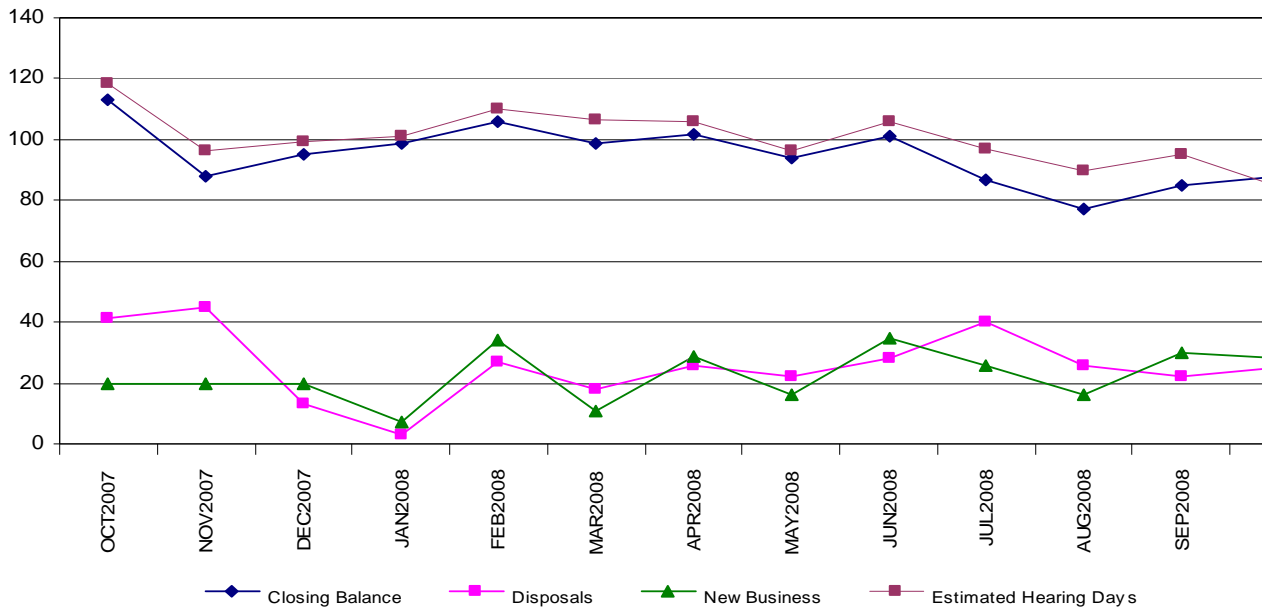
#### Yearly comparison of Civil Proceedings on hand

Circuit	October 2004	October 2005	October 2006	October 2007	October 2008
Auckland	227	249	217	348	350
Wellington	94	107	122	128	91
Christchurch	46	38	31	40	41
<b>National Total</b>	<b>367</b>	<b>394</b>	<b>370</b>	<b>516</b>	<b>482</b>

#### Yearly comparison of estimated sitting days for Civil Proceedings on hand

Circuit	October 2004	October 2005	October 2006	October 2007	October 2008
Auckland	1080	1183	989	1883	1958
Wellington	306	399	503	727	524
Christchurch	155	113	148	185	158
<b>National Total</b>	<b>1541</b>	<b>1695</b>	<b>1640</b>	<b>2795</b>	<b>2640</b>

## High Court: Civil Appeals



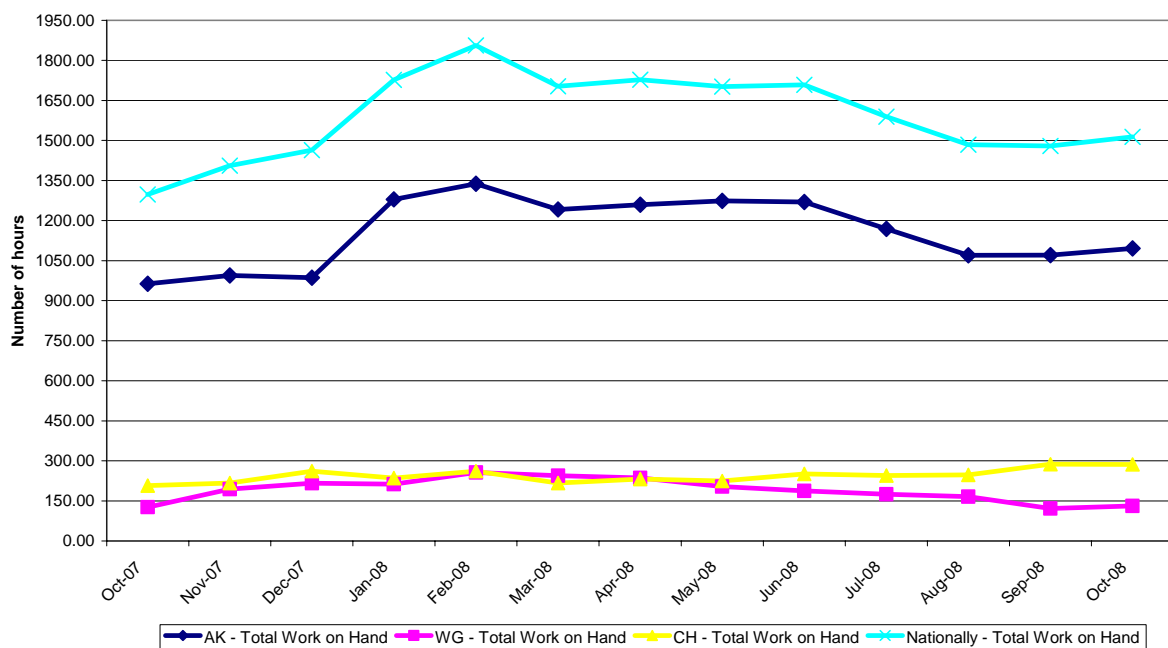
As at 31 October 2008, 88 civil appeals were on hand, a decrease of 22% from 113 as at 31 October 2007. The number of estimated hearing days required to dispose of the appeals on hand at the end of October 2008 was 84 days, compared with 118 days at the end of October 2007.

There were 25 disposals in October 2008, down from 41 disposals in October 2007.

There were 28 new civil appeals received in October 2008, an increase of 40% from 20 new appeals in October 2007.

[Clearance rate for October 2008 = 1:0.89]

Workload of Associate Judges - Circuit and National - 12 months (October 2007 to October 2008)



Throughput and Outstanding Workload for High Court Criminal Jury Trials - November 2007 to October 2008																				
Court	Opening Balance	New Business	Retrials Directed	Transfers In	Warrants Executed	Number of Cases Disposed			Warrants Issued	Transfers out	Merged/ Deleted	Hung Juries	Mis-trials	Closing Balance	Age of Outstanding Cases - Months					Estimated Hearing Days
						Heard	Before the day	On the day							< 3	3-6	6-9	9-12	> 12	
Auckland	103	98	13	1	2	49	47	19	1	10	5	6	5	75	1	5	9	10	51	754
Whangarei	13	12	-	1	0	7	4	6	2	0	1	0	0	6	0	0	3	1	2	40
Rotorua	34	33	2	0	0	21	11	3	0	8	1	1	1	23	0	1	5	5	12	206
Gisborne	3	2	-	0	0	1	1	0	0	0	0	0	0	3	0	0	1	0	2	20
New Plymouth	3	6	-	0	0	3	1	2	0	0	0	0	0	3	0	1	2	0	0	22
Hamilton	24	36	4	0	0	11	16	11	0	6	2	3	1	14	1	0	11	0	2	59
<b>Auckland Circuit</b>	<b>180</b>	<b>187</b>	<b>19</b>	<b>2</b>	<b>2</b>	<b>92</b>	<b>80</b>	<b>41</b>	<b>3</b>	<b>24</b>	<b>9</b>	<b>10</b>	<b>7</b>	<b>124</b>	<b>2</b>	<b>7</b>	<b>31</b>	<b>16</b>	<b>69</b>	<b>1,101</b>
Wellington	26	24	-	0	0	12	12	9	0	1	3	0	0	13	1	4	4	2	2	113
Napier	14	10	1	0	0	12	4	2	0	0	1	1	0	5	0	1	2	0	2	30
Palmerston North	5	9	2	1	0	7	2	0	1	0	0	2	0	5	0	0	1	2	2	28
Wanganui	2	5	1	0	0	1	3	0	0	0	0	0	0	4	0	1	0	1	2	23
Nelson	4	5	-	1	0	3	1	0	0	0	1	0	0	5	0	0	2	0	3	34
Blenheim	2	2	-	0	0	2	1	0	0	0	0	0	0	1	0	0	1	0	0	3
<b>Wellington Circuit</b>	<b>53</b>	<b>55</b>	<b>4</b>	<b>2</b>	<b>0</b>	<b>37</b>	<b>23</b>	<b>11</b>	<b>1</b>	<b>1</b>	<b>5</b>	<b>3</b>	<b>0</b>	<b>33</b>	<b>1</b>	<b>6</b>	<b>10</b>	<b>5</b>	<b>11</b>	<b>231</b>
Christchurch	11	21	2	3	0	9	16	3	1	2	1	0	0	5	0	0	1	0	4	115
Timaru	0	6	-	0	0	0	0	1	0	1	0	0	0	4	0	1	1	1	1	17
Dunedin	1	9	-	0	0	0	3	0	0	3	0	0	0	4	0	0	0	2	2	43
Invercargill	1	3	-	0	0	1	1	0	0	0	0	0	0	2	0	0	1	0	1	8
Greymouth	0	2	-	0	0	0	0	0	0	0	0	0	0	2	0	2	0	0	0	15
<b>Christchurch Circuit</b>	<b>13</b>	<b>41</b>	<b>2</b>	<b>3</b>	<b>0</b>	<b>10</b>	<b>20</b>	<b>4</b>	<b>1</b>	<b>6</b>	<b>1</b>	<b>0</b>	<b>0</b>	<b>17</b>	<b>0</b>	<b>3</b>	<b>3</b>	<b>3</b>	<b>8</b>	<b>198</b>
<b>NATIONAL TOTAL</b>	<b>246</b>	<b>283</b>	<b>25</b>	<b>7</b>	<b>2</b>	<b>139</b>	<b>123</b>	<b>56</b>	<b>5</b>	<b>31</b>	<b>15</b>	<b>13</b>	<b>7</b>	<b>174</b>	<b>3</b>	<b>16</b>	<b>44</b>	<b>24</b>	<b>88</b>	<b>1,530</b>

**Notes:**

- 1) Transfer out refers to the transfer of another trial within the same Jurisdiction and a transfer of a trial to another Jurisdiction.
- 2) In calculating the closing balance for an individual court, the cases transferred out are considered to be disposed.



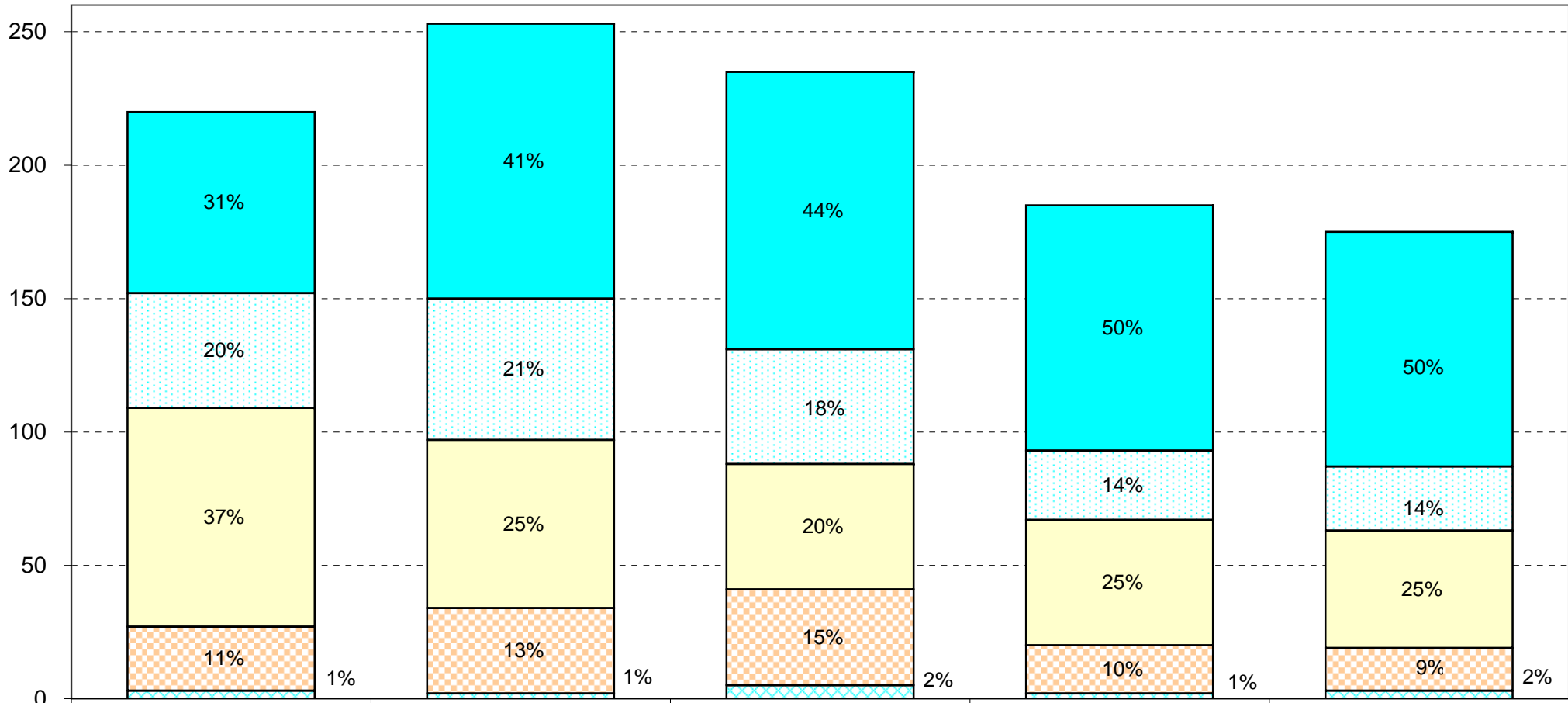
Court	Throughput and Outstanding Workload for High Court Criminal Jury Trials -														October 2008					(Manual)
	Opening Balance	New Business	Retrials Directed	Transfers In	Warrants Executed	Number of Cases Disposed			Warrants Issued	Transfer out	Merged/ Deleted	Hung Juries	Mis-trials	Closing Balance	Age of Outstanding Cases - Months					Estimated Hearing Days
						Heard	Before the day	On the day							< 3	3-6	6-9	9-12	> 12	
Auckland	79	8	3	0	0	4	3	2	1	0	3	2	0	75	1	5	9	10	51	754
Whangarei	6	1	0	0	0	1	0	0	0	0	0	0	0	6	0	0	3	1	2	40
Rotorua	27	1	1	0	0	3	0	0	0	1	1	0	1	23	0	1	5	5	12	206
Gisborne	3	0	0	0	0	0	0	0	0	0	0	0	0	3	0	0	1	0	2	20
New Plymouth	3	1	0	0	0	0	0	1	0	0	0	0	0	3	0	1	2	0	0	22
Hamilton	17	0	0	-	-	2	0	1	0	0	-	0	0	14	1	0	11	0	2	59
<b>Auckland Circuit</b>	<b>135</b>	<b>11</b>	<b>4</b>	<b>0</b>	<b>0</b>	<b>10</b>	<b>3</b>	<b>4</b>	<b>1</b>	<b>1</b>	<b>4</b>	<b>2</b>	<b>1</b>	<b>124</b>	<b>2</b>	<b>7</b>	<b>31</b>	<b>16</b>	<b>69</b>	<b>1101</b>
Wellington	13	1	-	-	-	0	0	1	-	-	-	-	-	13	1	4	4	2	2	113
Napier	3	2	0	0	0	0	0	0	0	0	0	0	0	5	0	1	2	0	2	30
Palmerston North	6	0	0	0	0	1	0	0	0	0	0	0	0	5	0	0	1	2	2	28
Wanganui	3	1	0	0	0	0	0	0	0	0	0	0	0	4	0	1	0	1	2	23
Nelson	6	0	0	0	0	0	1	0	0	0	0	0	0	5	0	0	2	0	3	34
Blenheim	2	0	0	0	0	1	0	0	0	0	0	0	0	1	0	0	1	0	0	3
<b>Wellington Circuit</b>	<b>33</b>	<b>4</b>	<b>0</b>	<b>0</b>	<b>0</b>	<b>2</b>	<b>1</b>	<b>1</b>	<b>0</b>	<b>0</b>	<b>0</b>	<b>0</b>	<b>0</b>	<b>33</b>	<b>1</b>	<b>6</b>	<b>10</b>	<b>5</b>	<b>11</b>	<b>231</b>
Christchurch	8	0	0	0	0	2	1	0	0	0	0	0	0	5	0	0	1	0	4	115
Timaru	3	1	0	0	0	0	0	0	0	0	0	0	0	4	0	1	1	1	1	17
Dunedin	4	0	0	0	0	0	0	0	0	0	0	0	0	4	0	0	0	2	2	43
Invercargill	2	0	0	0	0	0	0	0	0	0	0	0	0	2	0	0	1	0	1	8
Greymouth	0	2	0	0	0	0	0	0	0	0	0	0	0	2	0	2	0	0	0	15
<b>Christchurch Circuit</b>	<b>17</b>	<b>3</b>	<b>0</b>	<b>0</b>	<b>0</b>	<b>2</b>	<b>1</b>	<b>0</b>	<b>0</b>	<b>0</b>	<b>0</b>	<b>0</b>	<b>0</b>	<b>17</b>	<b>0</b>	<b>3</b>	<b>3</b>	<b>3</b>	<b>8</b>	<b>198</b>
<b>NATIONAL TOTAL</b>	<b>185</b>	<b>18</b>	<b>4</b>	<b>0</b>	<b>0</b>	<b>14</b>	<b>5</b>	<b>5</b>	<b>1</b>	<b>1</b>	<b>4</b>	<b>2</b>	<b>1</b>	<b>174</b>	<b>3</b>	<b>16</b>	<b>44</b>	<b>24</b>	<b>88</b>	<b>1530</b>

**Notes:**

- 1) Transfer out refers to the transfer of another trial within the same Jurisdiction and a transfer of a trial to another Jurisdiction.
- 2) In calculating the closing balance for an individual court, the cases transferred out are considered to be disposed.
- 3) All numbers have been manually calculated in the absence of CMS reports



**High Court Criminal Jury Trials**  
*Ages of Cases on Hand*



	As at 30 June 2006	As at 30 June 2007	As at 30 June 2008	As at 30 September 2008	As at 31 October 2008
■ > 12 months	68	103	104	92	88
■ 9-12 months	43	53	43	26	24
■ 6-9 months	82	63	47	47	44
■ 3-6 months	24	32	36	18	16
■ < 3 months	3	2	5	2	3

Throughput and Outstanding Workload for High Court Civil Cases - November 2007 to October 2008								
Court	Opening Balance	New Cases	Number of Cases Actioned			Closing Balance	Estimated Hearing Days	
			Heard	Before the day	On the day		October 2007	October 2008
Auckland	297	433	206	236	2	286	1,719	1,631
Whangarei	9	14	6	5	2	10	23	50
Rotorua	19	37	18	16	1	21	76	123
Gisborne	2	3	1	2	1	1	5	2
New Plymouth	3	10	2	6	2	3	10	13
Hamilton	18	59	14	32	1	30	51	139
<b>Auckland Circuit</b>	<b>348</b>	<b>556</b>	<b>247</b>	<b>297</b>	<b>9</b>	<b>351</b>	<b>1,883</b>	<b>1,958</b>
Wellington	101	194	136	85	-	74	622	446
Napier	8	14	10	3	4	5	27	33
Palmerston North	2	5	2	3	-	2	13	15
Wanganui	3	7	6	1	-	3	11	7
Nelson	11	7	7	8	-	3	38	8
Blenheim	3	6	1	4	-	4	16	21
<b>Wellington Circuit</b>	<b>128</b>	<b>233</b>	<b>162</b>	<b>104</b>	<b>4</b>	<b>91</b>	<b>727</b>	<b>528</b>
Christchurch	30	84	53	26	3	32	158	119
Timaru	1	1	-	1	-	1	3	2
Dunedin	7	13	5	9	2	4	22	20
Invercargill	1	7	2	1	1	4	2	17
Greymouth	1	-	1	-	-	0	1	-
<b>Christchurch Circuit</b>	<b>40</b>	<b>105</b>	<b>61</b>	<b>37</b>	<b>6</b>	<b>41</b>	<b>186</b>	<b>158</b>
<b>NATIONAL TOTAL</b>	<b>516</b>	<b>894</b>	<b>470</b>	<b>438</b>	<b>19</b>	<b>483</b>	<b>2,796</b>	<b>2,644</b>

### Throughput and Outstanding Workload for High Court Civil Cases - October 2008

Court	Opening Balance	New Cases	Number of Cases Actioned			Closing Balance	Estimated Hearing Days	
			Heard	Before the day	On the day		Last Month	This Month
Auckland	291	28	15	18	-	286	1,610	1,631
Whangarei	11	-	-	1	-	10	53	50
Rotorua	19	2	-	-	-	21	108	123
Gisborne	2	-	-	1	-	1	3	2
New Plymouth	3	-	-	-	-	3	13	13
Hamilton	24	10	3	1	-	30	110	139
<b>Auckland Circuit</b>	<b>350</b>	<b>40</b>	<b>18</b>	<b>21</b>	<b>-</b>	<b>351</b>	<b>1,897</b>	<b>1,958</b>
Wellington	85	9	10	10	-	74	510	446
Napier	6	2	1	-	2	5	34	33
Palmerston North	2	-	-	-	-	2	15	15
Wanganui	2	2	1	-	-	3	2	7
Nelson	5	1	3	-	-	3	18	8
Blenheim	5	1	1	1	-	4	26	21
<b>Wellington Circuit</b>	<b>105</b>	<b>15</b>	<b>16</b>	<b>11</b>	<b>2</b>	<b>91</b>	<b>604</b>	<b>528</b>
Christchurch	37	8	6	6	1	32	127	119
Timaru	1	-	-	-	-	1	2	2
Dunedin	4	-	-	-	-	4	20	20
Invercargill	4	-	-	-	-	4	17	17
Greymouth	0	-	-	-	-	0	-	-
<b>Christchurch Circuit</b>	<b>46</b>	<b>8</b>	<b>6</b>	<b>6</b>	<b>1</b>	<b>41</b>	<b>166</b>	<b>158</b>
<b>NATIONAL TOTAL</b>	<b>501</b>	<b>63</b>	<b>40</b>	<b>38</b>	<b>3</b>	<b>483</b>	<b>2,667</b>	<b>2,644</b>

Throughput and Outstanding Workload for High Court Criminal Appeal Cases - November 2007 to October 2008								
Court	Opening Balance	New Cases	Number of Cases Actioned			Closing Balance	Estimated Hearing Days	
			Heard	Before the day	On the day		October 2007	October 2008
Auckland	35	122	111	14	9	35	20.0	14.0
Whangarei	4	42	31	5	4	6	0.8	1.2
Rotorua	14	98	87	15	-	10	5.0	4.0
Gisborne	2	14	8	2	-	6	1.0	1.5
New Plymouth	2	28	15	1	7	7	0.7	1.5
Hamilton	8	60	51	10	1	6	1.3	1.0
<b>Auckland Circuit</b>	<b>65</b>	<b>364</b>	<b>303</b>	<b>47</b>	<b>21</b>	<b>70</b>	<b>28.80</b>	<b>23.20</b>
Wellington	17	92	92	-	-	16	5.5	5.0
Napier	3	21	20	1	2	1	1.0	0.5
Palmerston North	3	40	27	7	1	8	0.7	1.8
Wanganui	8	17	20	3	-	2	1.5	1.0
Nelson	6	27	23	4	-	5	2.4	1.2
Blenheim	1	9	7	2	-	1	0.3	0.4
<b>Wellington Circuit</b>	<b>38</b>	<b>206</b>	<b>189</b>	<b>17</b>	<b>3</b>	<b>33</b>	<b>11.4</b>	<b>9.9</b>
Christchurch	10	180	160	17	0	13	2.5	3.2
Timaru	1	21	19	0	0	3	0.5	1.2
Dunedin	5	40	30	8	2	5	1.0	0.5
Invercargill	1	29	22	3	0	4	0.2	1.6
Greymouth	2	10	5	7	0	0	0.7	-
<b>Christchurch Circuit</b>	<b>19</b>	<b>280</b>	<b>236</b>	<b>35</b>	<b>2</b>	<b>25</b>	<b>4.9</b>	<b>6.5</b>
<b>NATIONAL TOTAL</b>	<b>122</b>	<b>850</b>	<b>728</b>	<b>99</b>	<b>26</b>	<b>128</b>	<b>45.1</b>	<b>39.6</b>

### Throughput and Outstanding Workload for High Court Criminal Appeals - October 2008

Court	Opening Balance	New Cases	Number of Cases Actioned			Closing Balance	Estimated Hearing Days	
			Heard	Before the day	On the day		Last Month	This Month
Auckland	25	17	7	-	-	35	8.0	14.0
Whangarei	6	6	3	2	1	6	2.0	1.2
Rotorua	17	4	8	3	-	10	5.5	4.0
Gisborne	6	-	-	-	-	6	1.1	1.5
New Plymouth	4	3	-	-	-	7	0.9	1.5
Hamilton	8	4	5	1	-	6	1.8	1.0
<b>Auckland Circuit</b>	<b>66</b>	<b>34</b>	<b>23</b>	<b>6</b>	<b>1</b>	<b>70</b>	<b>19.3</b>	<b>23.2</b>
Wellington	11	7	2	-	-	16	4.0	5.0
Napier	1	1	1	-	-	1	0.5	0.5
Palmerston North	7	1	-	-	-	8	1.6	1.8
Wanganui	5	1	2	2	-	2	1.0	1.0
Nelson	6	1	1	1	-	5	1.5	1.2
Blenheim	1	-	-	-	-	1	0.4	0.4
<b>Wellington Circuit</b>	<b>31</b>	<b>11</b>	<b>6</b>	<b>3</b>	<b>-</b>	<b>33</b>	<b>9.0</b>	<b>9.9</b>
Christchurch	16	15	16	2	-	13	5.2	3.2
Timaru	0	3	-	-	-	3	-	1.2
Dunedin	3	3	1	-	-	5	1.4	0.5
Invercargill	5	1	2	-	-	4	1.6	1.6
Greymouth	0	-	-	-	-	0	-	-
<b>Christchurch Circuit</b>	<b>24</b>	<b>22</b>	<b>19</b>	<b>2</b>	<b>-</b>	<b>25</b>	<b>8.2</b>	<b>6.5</b>
<b>NATIONAL TOTAL</b>	<b>121</b>	<b>67</b>	<b>48</b>	<b>11</b>	<b>1</b>	<b>128</b>	<b>36.5</b>	<b>39.6</b>

Throughput and Outstanding Workload for High Court Civil & Family Appeals - November 2007 to October 2008								
Court	Opening Balance	New Cases	Number of Cases Actioned			Closing Balance	Estimated Hearing Days	
			Heard	Before the day	On the day		October 2007	October 2008
Auckland	36	104	81	20	-	39	41.5	34.5
Whangarei	2	9	7	1	-	1	2.0	1.0
Rotorua	4	16	11	2	1	6	2.5	7.5
Gisborne	0	-	-	-	-	0	-	-
New Plymouth	4	7	7	2	-	2	3.0	1.5
Hamilton	16	13	18	8	-	3	17.0	5.0
<b>Auckland Circuit</b>	<b>62</b>	<b>149</b>	<b>124</b>	<b>33</b>	<b>1</b>	<b>51</b>	<b>66.0</b>	<b>49.5</b>
Wellington	36	74	61	24	-	24	44.0	22.5
Napier	3	6	7	1	-	1	1.5	0.5
Palmerston North	6	3	4	4	-	1	3.3	1.0
Wanganui	1	2	1	1	-	1	0.5	2.0
Nelson	3	3	4	-	-	2	1.4	1.0
Blenheim	0	3	1	-	-	2	-	1.5
<b>Wellington Circuit</b>	<b>49</b>	<b>91</b>	<b>78</b>	<b>30</b>	<b>-</b>	<b>31</b>	<b>50.7</b>	<b>28.5</b>
Christchurch	2	25	18	4	-	5	1.6	5.8
Timaru	0	1	1	-	-	0	-	-
Dunedin	0	3	3	-	-	0	-	-
Invercargill	0	3	1	-	1	1	-	0.6
Greymouth	0	-	-	-	-	0	-	-
<b>Christchurch Circuit</b>	<b>2</b>	<b>32</b>	<b>23</b>	<b>4</b>	<b>1</b>	<b>6</b>	<b>1.6</b>	<b>6.4</b>
<b>NATIONAL TOTAL</b>	<b>113</b>	<b>272</b>	<b>225</b>	<b>67</b>	<b>2</b>	<b>88</b>	<b>118.3</b>	<b>84.4</b>

Throughput and Outstanding Workload for High Court Civil & Family Appeals - October 2008								
Court	Opening Balance	New Cases	Number of Cases Actioned			Closing Balance	Estimated Hearing Days	
			Heard	Before the day	On the day		Last Month	This Month
Auckland	33	15	5	4	-	39	43	35
Whangarei	4	-	3	-	-	1	3.0	1.0
Rotorua	6	3	2	1	-	6	7.0	8
Gisborne	0	-	-	-	-	0	-	-
New Plymouth	2	-	-	-	-	2	1.50	1.5
Hamilton	5	-	1	1	-	3	8.0	5.0
<b>Auckland Circuit</b>	<b>50</b>	<b>18</b>	<b>11</b>	<b>6</b>	<b>-</b>	<b>51</b>	<b>62.0</b>	<b>49.5</b>
Wellington	22	7	4	1	-	24	22.0	22.5
Napier	1	-	-	-	-	1	0.5	0.5
Palmerston North	1	-	-	-	-	1	1.0	1.0
Wanganui	1	-	-	-	-	1	2.0	2.0
Nelson	1	1	-	-	-	2	0.5	1.0
Blenheim	2	-	-	-	-	2	1.5	1.5
<b>Wellington Circuit</b>	<b>28</b>	<b>8</b>	<b>4</b>	<b>1</b>	<b>-</b>	<b>31</b>	<b>27.5</b>	<b>28.5</b>
Christchurch	6	2	2	1	-	5	4.8	5.8
Timaru	0	-	-	-	-	0	-	-
Dunedin	0	-	-	-	-	0	-	-
Invercargill	1	-	-	-	-	1	0.6	0.6
Greymouth	0	-	-	-	-	0	-	-
<b>Christchurch Circuit</b>	<b>7</b>	<b>2</b>	<b>2</b>	<b>1</b>	<b>-</b>	<b>6</b>	<b>5.4</b>	<b>6.4</b>
<b>NATIONAL TOTAL</b>	<b>85</b>	<b>28</b>	<b>17</b>	<b>8</b>	<b>-</b>	<b>88</b>	<b>94.9</b>	<b>84.4</b>

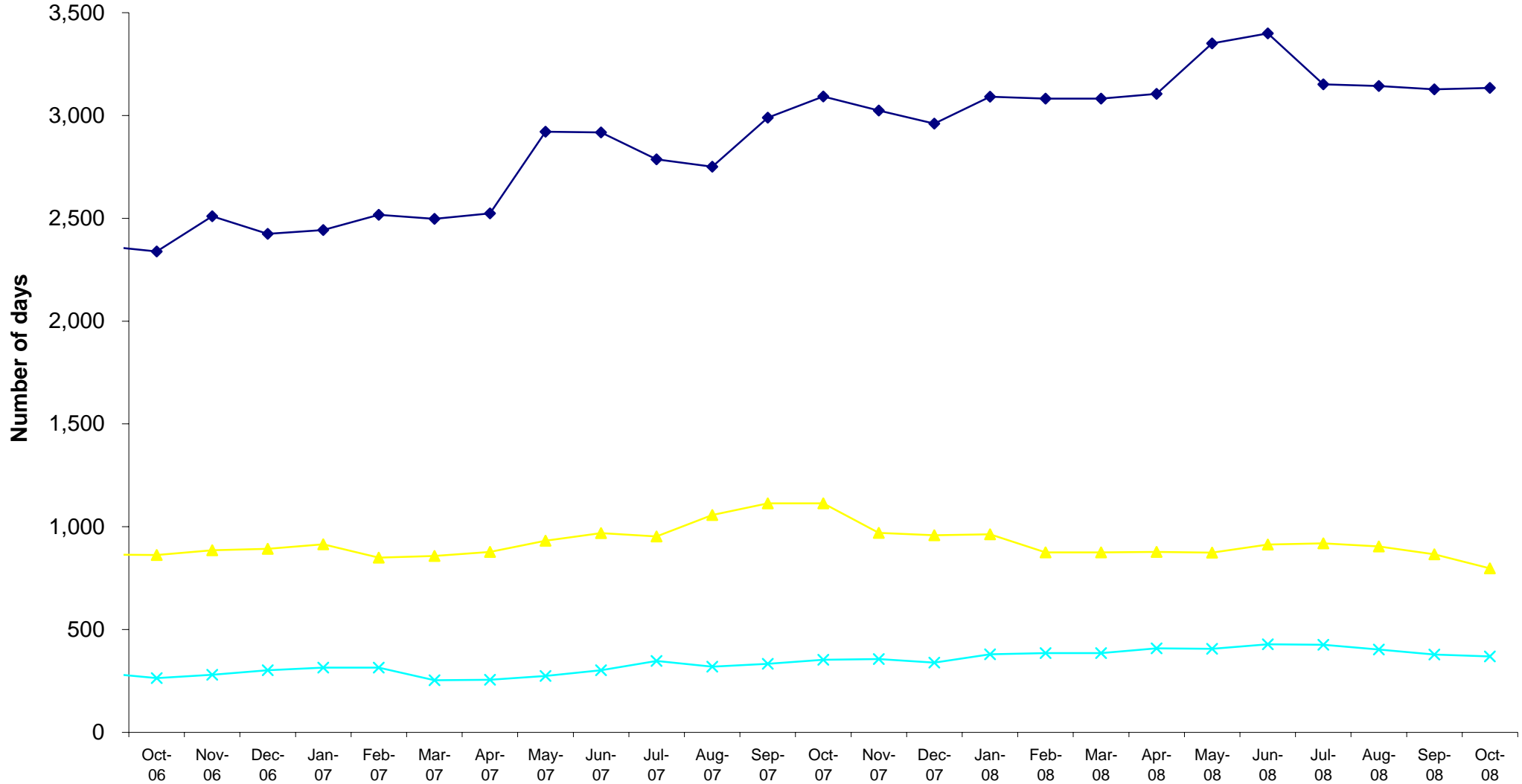
## High Court Business On Hand Summary

Comparative Quarterly Figures for the Year Ending 30 September 2008

Comparative Monthly Figures for the Four Months to 31 October 2008

ESTIMATED SITTING DAYS								
Work on hand in estimated sitting days for all criminal trials, civil cases, cases stated and appeals (criminal, civil, family, tribunals and administrative)								
High Court	Quarterly				Months			
	Dec-07	Mar-08	Jun-08	Sep-08	Jul-08	Aug-08	Sep-08	Oct-08
Auckland	2,393.0	2,393.5	2,682.6	2,431.5	2,467.6	2,483.1	2,431.5	2,433.5
Whangarei	79.3	108.6	115.2	95.0	1,232.5	102.7	95.0	92.2
Gisborne	22.0	18.0	13.3	24.1	18.3	20.5	24.1	23.5
Rotorua	250.3	294.0	340.0	344.0	324.0	323.5	344.0	342.5
New Plymouth	34.3	27.8	22.6	35.4	18.8	29.0	35.4	38.0
Hamilton	181.4	240.0	226.2	197.8	220.2	184.8	197.8	204.0
<b>Auckland Circuit</b>	<b>2,960.3</b>	<b>3,081.9</b>	<b>3,399.9</b>	<b>3,127.8</b>	<b>4,281.4</b>	<b>3,143.6</b>	<b>3,127.8</b>	<b>3,133.7</b>
Wellington	680.9	636.8	701.4	646.9	705.3	695.0	646.9	586.3
Palmerston North	47.6	55.8	79.6	50.6	70.1	58.0	50.6	45.8
Napier	117.5	108.0	64.0	44.5	49.5	50.0	44.5	63.5
Wanganui	10.5	6.5	6.0	23.0	22.3	22.0	23.0	32.5
Nelson	77.7	38.5	46.9	60.0	57.3	59.3	60.0	43.7
Blenheim	24.0	29.2	15.4	40.9	15.4	19.6	40.9	25.9
<b>Wellington Circuit</b>	<b>958.2</b>	<b>874.8</b>	<b>913.3</b>	<b>865.9</b>	<b>919.9</b>	<b>903.9</b>	<b>865.9</b>	<b>797.7</b>
Christchurch	230.5	248.1	269.9	273.0	262.7	280.4	273.0	242.8
Greymouth	0.2	2.5	2.0	0.0	1.0	0.0	0.0	15.0
Dunedin	92.4	106.5	88.2	64.6	91.8	82.4	64.6	63.7
Timaru	4.1	11.5	43.2	14.0	43.3	13.2	14.0	20.2
Invercargill	11.6	16.4	25.2	27.2	27.4	26.4	27.2	27.2
<b>Christchurch Circuit</b>	<b>338.8</b>	<b>385.0</b>	<b>428.5</b>	<b>378.8</b>	<b>426.2</b>	<b>402.4</b>	<b>378.8</b>	<b>368.9</b>
<b>NATIONAL TOTAL</b>	<b>4,257.3</b>	<b>4,341.7</b>	<b>4,741.7</b>	<b>4,372.5</b>	<b>5,627.4</b>	<b>4,449.9</b>	<b>4,372.5</b>	<b>4,300.3</b>

**Estimated Sitting Days - October 2006 to October 2008**  
 for all criminal trials, civil cases, cases stated and appeals (criminal, civil, family, tribunals and administrative)



	Sep-06	Oct-06	Nov-06	Dec-06	Jan-07	Feb-07	Mar-07	Apr-07	May-07	Jun-07	Jul-07	Aug-07	Sep-07	Oct-07	Nov-07	Dec-07	Jan-08	Feb-08	Mar-08	Apr-08	May-08	Jun-08	Jul-08	Aug-08	Sep-08	Oct-08
◆ Auckland Circuit	2,366.3	2,339.0	2,510.0	2,424.8	2,443.4	2,517.0	2,497.3	2,524.0	2,921.3	2,917.6	2,787.2	2,750.9	2,989.3	3,093.0	3,023.9	2,960.3	3,091.2	3,081.9	3,081.9	3,105.3	3,351.0	3,399.9	3,151.5	3,143.6	3,127.8	3,133.7
▲ Wellington Circuit	865.1	862.4	886.3	892.8	915.2	849.3	858.3	877.6	932.3	968.9	952.4	1,056.8	1,113.8	1,114.2	970.2	958.2	963.0	874.8	874.8	877.6	874.5	913.3	919.9	903.9	865.9	797.7
× Christchurch Circuit	289.0	264.3	279.7	301.9	315.2	315.4	253.1	256.3	274.2	302.0	347.6	319.6	333.8	352.7	356.3	338.8	379.3	385.0	385.0	408.7	406.1	428.5	426.2	402.4	378.8	368.9