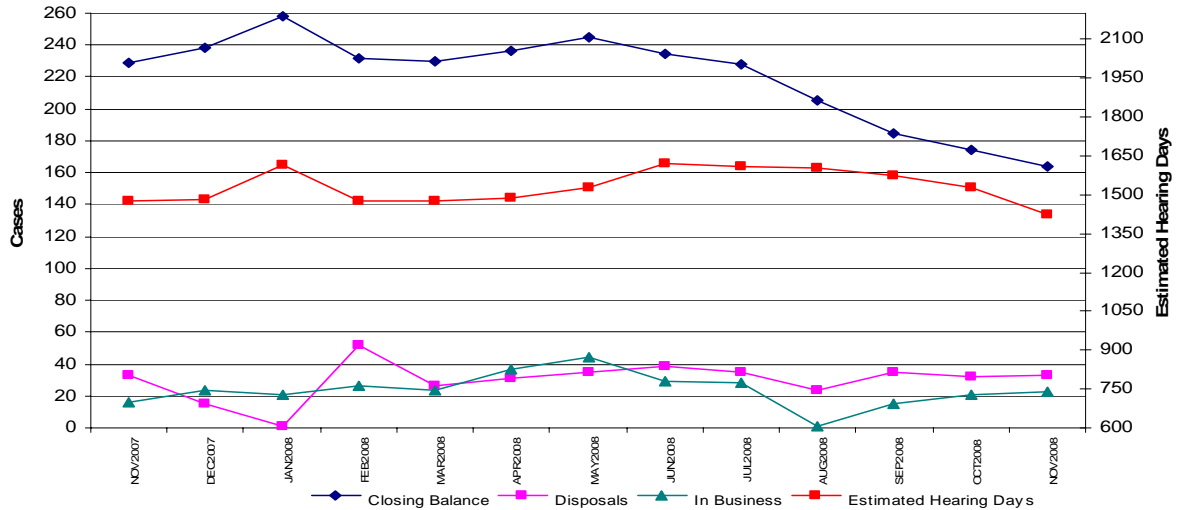


HIGH COURT WORKLOAD – NOVEMBER 2008

High Court: Jury Trials



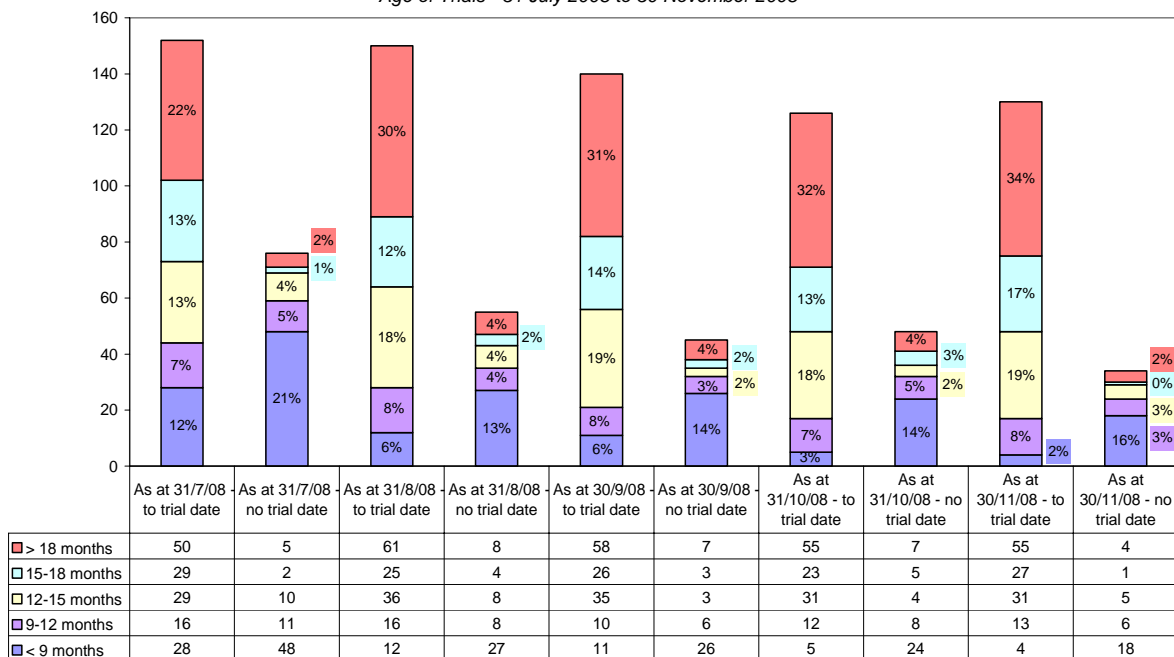
The number of trials on hand as at 30 November 2008 was 164, down 10 trials from 31 October 2008 (174) and down 28% from the 229 trials on hand as at 30 November 2007. The estimated hearing days required to hear these trials was 1422 days compared with 1477 as at 30 November 2007.

The total number of jury trials disposed of in November 2008 was 33, the same as in November 2007. These include trials that were heard, mistrials, warrants issued and hung juries.

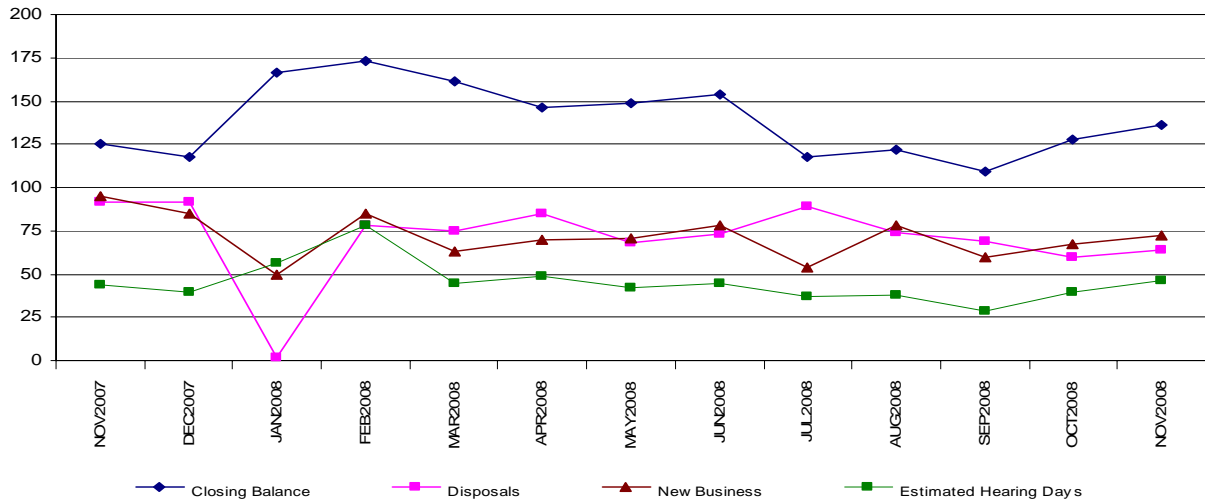
Twenty-three new trials were received during November 2008, up 44% from the 16 trials received in November 2007.

[Clearance rate for November 2008 = 1:1.43]

High Court Criminal Jury Trials
Age of Trials - 31 July 2008 to 30 November 2008



High Court: Criminal Appeals



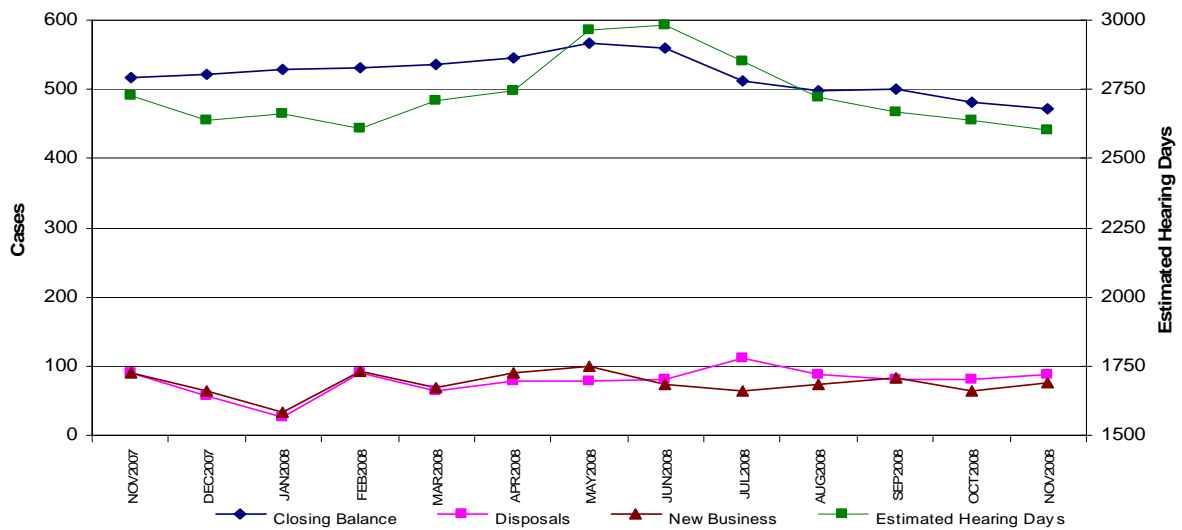
As at 30 November 2008, 136 criminal appeals were on hand, compared to 125 in November 2007 (up 9%). The number of estimated hearing days required to dispose of the appeals on hand at the end of November 2008 was 46 days, compared with 43 days at the end of November 2007.

There were 64 disposals in November 2008, down 30% from 92 disposals in November 2007.

There were 72 new criminal appeals received in November 2008, a decrease of 24% from 95 new appeals in November 2007.

[Clearance rate for November 2008 = 1:0.88]

High Court: Civil Proceedings

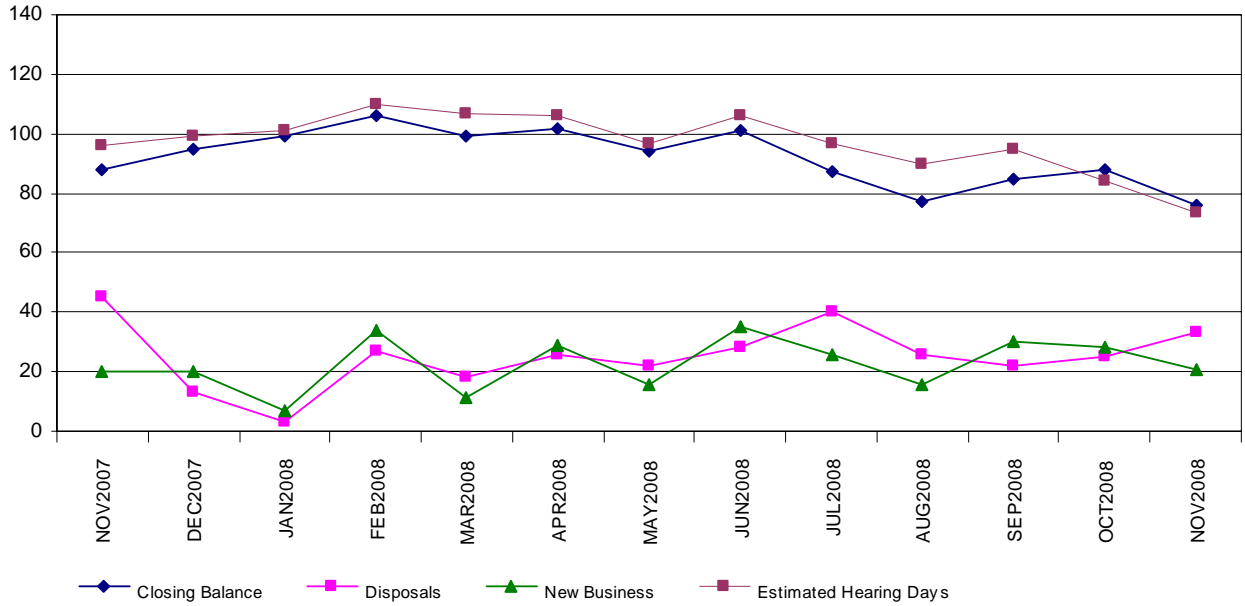


As at 30 November 2008, outstanding civil proceedings numbered 471, a decrease of 9% from the 516 on hand as at the end of November 2007. At the end of November 2008 there were 2603 hearing days estimated to be required, down from the 2730 noted in November 2007.

New business for the month of November 2008 was 76, a decrease of 16% on the 91 in November 2007. Disposals in November 2008 numbered 88, down from 91 in November 2007.

[Clearance rate for November 2008 = 1:1.15]

High Court: Civil Appeals



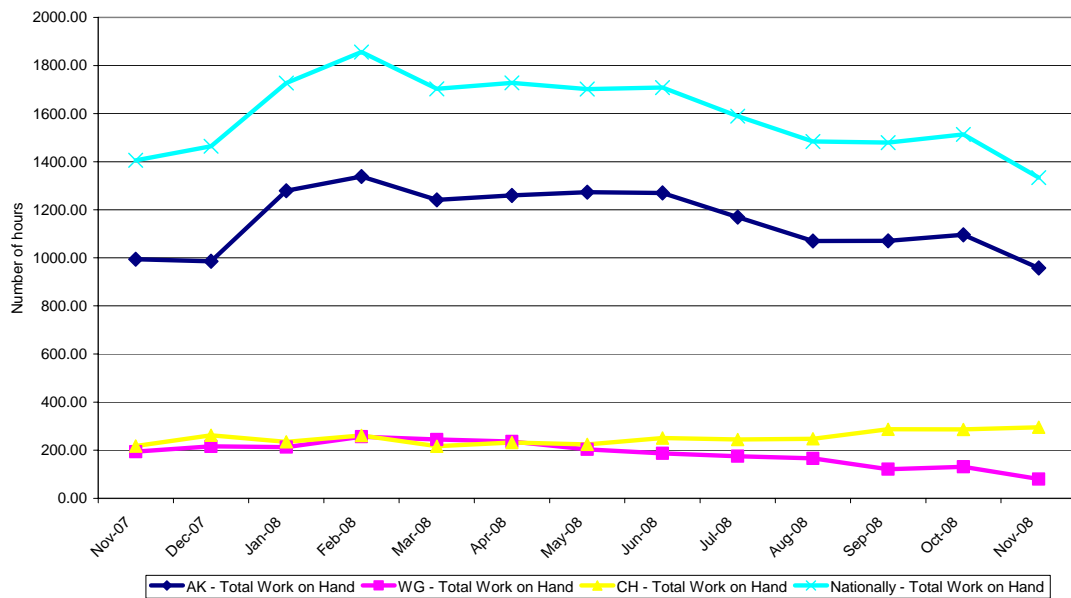
As at 30 November 2008, 76 civil appeals were on hand, a decrease of 14% from 88 from November 2007. The number of estimated hearing days required to dispose of the appeals on hand at the end of November 2008 was 74 days, compared with 96 days at the end of November 2007.

There were 33 disposals in November 2008, down 26% from 45 disposals in November 2007.

There were 21 new civil appeals received in November 2008, up one from 20 new appeals in November 2007.

[Clearance rate for November 2008 = 1:1.57]

Workload of Associate Judges - Circuit and National - 12 months (November 2007 to November 2008)



Throughput and Outstanding Workload for High Court Criminal Jury Trials - December 2007 to November 2008																				
Court	Opening Balance	New Business	Retrials Directed	Transfers In	Warrants Executed	Number of Cases Disposed			Warrants Issued	Transfers out	Merged/ Deleted	Hung Juries	Mis-trials	Closing Balance	Age of Outstanding Cases - Months					Estimated Hearing Days
						Heard	Before the day	On the day							< 3	3-6	6-9	9-12	> 12	
Auckland	94	97	14	1	3	50	44	17	1	7	8	7	5	70	0	3	9	13	45	671
Whangarei	12	14	-	0	0	5	5	6	2	0	1	0	0	7	2	0	3	1	1	48
Rotorua	30	33	3	0	0	20	10	4	0	8	1	2	1	20	1	1	4	3	11	160
Gisborne	3	3	-	0	0	3	1	0	0	0	0	0	0	2	0	0	2	0	0	8
New Plymouth	4	5	-	0	0	3	1	2	0	0	0	0	0	3	0	1	2	0	0	22
Hamilton	20	35	5	0	0	8	17	11	0	6	2	4	1	11	0	0	2	4	5	52
Auckland Circuit	163	187	22	1	3	89	78	40	3	21	12	13	7	113	3	5	22	21	62	961
Wellington	25	26	-	0	0	12	11	9	0	1	3	0	0	15	1	4	5	2	3	121
Napier	14	11	1	0	0	12	4	4	0	0	1	1	0	4	0	2	2	0	0	27
Palmerston North	5	10	2	1	0	7	2	0	1	0	0	2	0	6	0	0	1	1	4	51
Wanganui	2	5	1	0	0	1	3	0	0	0	0	0	0	4	0	1	0	1	2	23
Nelson	4	5	-	0	0	4	1	0	0	0	0	0	0	4	0	0	2	0	2	20
Blenheim	2	2	-	0	0	2	1	0	0	0	0	0	0	1	0	0	1	0	0	3
Wellington Circuit	52	59	4	1	0	38	22	13	1	1	4	3	0	34	1	7	11	4	11	245
Christchurch	11	21	2	3	0	8	16	3	1	2	1	0	0	6	0	0	1	1	4	135
Timaru	0	6	-	0	0	0	1	1	0	1	0	0	0	3	0	1	0	1	1	15
Dunedin	3	7	-	0	0	0	3	0	0	3	0	0	0	4	0	0	0	2	2	43
Invercargill	0	3	-	0	0	0	1	0	0	0	0	0	0	2	0	0	0	1	1	8
Greymouth	0	2	-	0	0	0	0	0	0	0	0	0	0	2	0	1	1	0	0	15
Christchurch Circuit	14	39	2	3	0	8	21	4	1	6	1	0	0	17	0	2	2	5	8	216
NATIONAL TOTAL	229	285	28	5	3	135	121	57	5	28	17	16	7	164	4	14	35	30	81	1,422

Notes:

- 1) Transfer out refers to the transfer of another trial within the same Jurisdiction and a transfer of a trial to another Jurisdiction.
- 2) In calculating the closing balance for an individual court, the cases transferred out are considered to be disposed.



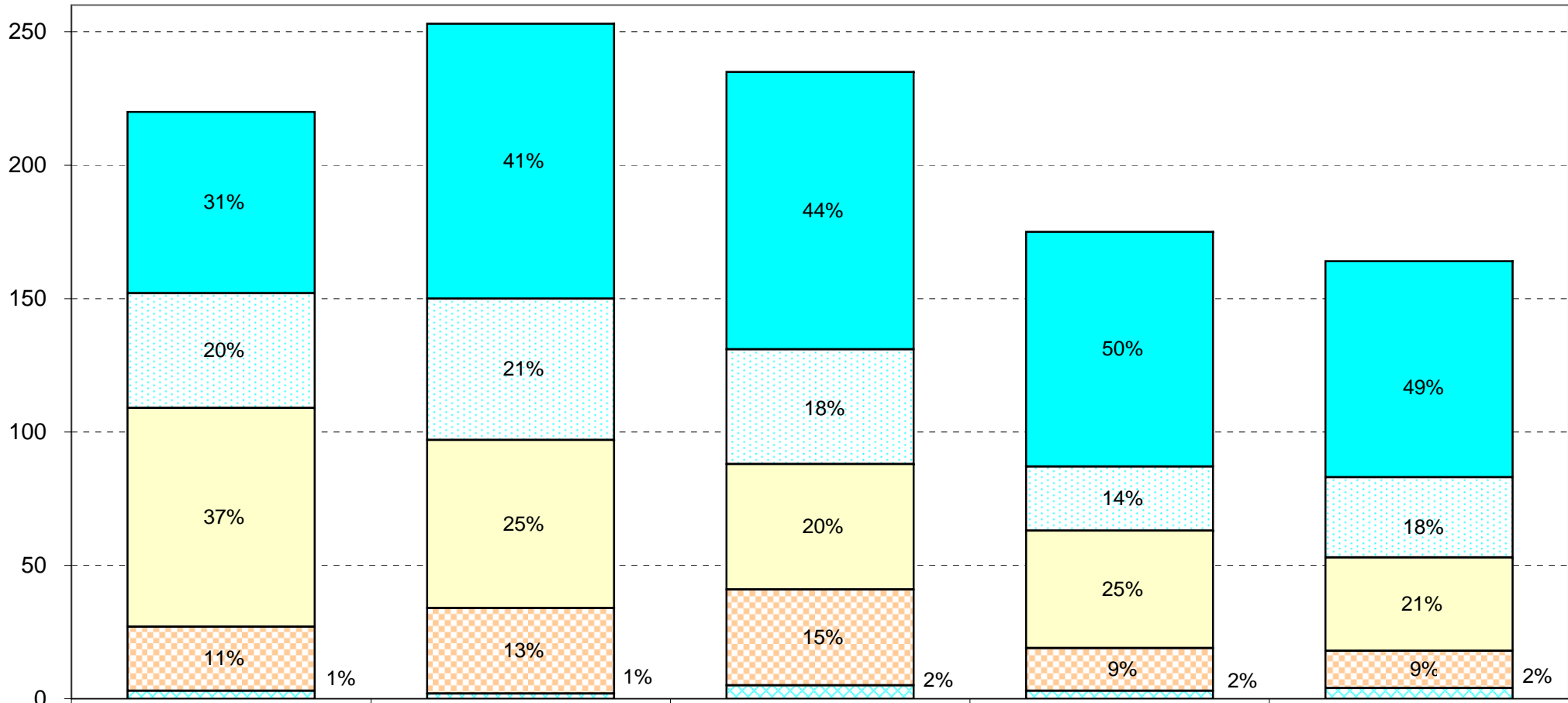
Court	Throughput and Outstanding Workload for High Court Criminal Jury Trials - November 2008 (Manual)														Age of Outstanding Cases - Months					Estimated Hearing Days
	Opening Balance	New Business	Retrials Directed	Transfers In	Warrants Executed	Number of Cases Disposed			Warrants Issued	Transfer out	Merged/ Deleted	Hung Juries	Mis-trials	Closing Balance	< 3	3-6	6-9	9-12	> 12	
						Heard	Before the day	On the day												
Auckland	75	6	2	0	1	5	3	1	0	0	3	2	0	70	0	3	9	13	45	671
Whangarei	6	3	0	0	0	0	1	1	0	0	0	0	0	7	2	0	3	1	1	48
Rotorua	23	1	1	0	0	1	1	2	0	0	0	1	0	20	1	1	4	3	11	160
Gisborne	3	1	0	0	0	2	0	0	0	0	0	0	0	2	0	0	2	0	0	8
New Plymouth	3	0	0	0	0	0	0	0	0	0	0	0	0	3	0	1	2	0	0	22
Hamilton	14	0	1	0	0	0	2	1	0	0	0	1	0	11	0	0	2	4	5	52
Auckland Circuit	124	11	4	0	1	8	7	5	0	0	3	4	0	113	3	5	22	21	62	961
Wellington	13	3	0	0	0	0	1	0	0	0	0	0	0	15	1	4	5	2	3	121
Napier	5	2	0	0	0	1	0	2	0	0	0	0	0	4	0	2	2	0	0	27
Palmerston North	5	1	0	0	0	0	0	0	0	0	0	0	0	6	0	0	1	1	4	51
Wanganui	4	0	0	0	0	0	0	0	0	0	0	0	0	4	0	1	0	1	2	23
Nelson	5	0	0	0	0	1	0	0	0	0	0	0	0	4	0	0	2	0	2	20
Blenheim	1	0	0	0	0	0	0	0	0	0	0	0	0	1	0	0	1	0	0	3
Wellington Circuit	33	6	0	0	0	2	1	2	0	0	0	0	0	34	1	7	11	4	11	245
Christchurch	5	1	0	0	0	0	0	0	0	0	0	0	0	6	0	0	1	1	4	135
Timaru	4	0	0	0	0	0	1	0	0	0	0	0	0	3	0	1	0	1	1	15
Dunedin	4	0	0	0	0	0	0	0	0	0	0	0	0	4	0	0	0	2	2	43
Invercargill	2	0	0	0	0	0	0	0	0	0	0	0	0	2	0	0	0	1	1	8
Greymouth	2	0	0	0	0	0	0	0	0	0	0	0	0	2	0	1	1	0	0	15
Christchurch Circuit	17	1	0	0	0	0	1	0	0	0	0	0	0	17	0	2	2	5	8	216
NATIONAL TOTAL	174	18	4	0	1	10	9	7	0	0	3	4	0	164	4	14	35	30	81	1422

Notes:

- 1) Transfer out refers to the transfer of another trial within the same Jurisdiction and a transfer of a trial to another Jurisdiction.
- 2) In calculating the closing balance for an individual court, the cases transferred out are considered to be disposed.
- 3) All numbers have been manually calculated in the absence of CMS reports



High Court Criminal Jury Trials
Ages of Cases on Hand



	As at 30 June 2006	As at 30 June 2007	As at 30 June 2008	As at 31 October 2008	As at 30 November 2008
> 12 months	68	103	104	88	81
9-12 months	43	53	43	24	30
6-9 months	82	63	47	44	35
3-6 months	24	32	36	16	14
< 3 months	3	2	5	3	4

Throughput and Outstanding Workload for High Court Civil Cases - December 07 - November 08								
Court	Opening Balance	New Cases	Number of Cases Actioned			Closing Balance	Estimated Hearing Days	
			Heard	Before the day	On the day		November 2007	November 2008
Auckland	297	425	213	238	-	271	1,691	1,576
Whangarei	11	13	5	5	2	12	44	50
Rotorua	21	34	17	16	2	20	95	112
Gisborne	2	3	1	2	1	1	5	2
New Plymouth	5	10	2	6	2	5	16	26
Hamilton	22	54	15	29	1	31	82	145
Auckland Circuit	358	539	253	296	8	340	1,932	1,910
Wellington	88	202	135	84	-	71	530	440
Napier	8	14	10	3	5	4	27	18
Palmerston North	3	4	2	3	-	2	13	15
Wanganui	1	6	5	-	-	2	1	2
Nelson	9	5	5	6	-	3	39	7
Blenheim	3	6	1	4	-	4	16	16
Wellington Circuit	112	237	158	100	5	86	626	497
Christchurch	35	80	52	27	3	33	128	122
Timaru	1	4	-	2	-	3	3	19
Dunedin	8	11	6	7	2	4	39	19
Invercargill	1	8	2	1	1	5	2	37
Greymouth	1	-	1	-	-	0	1	-
Christchurch Circuit	46	103	61	37	6	45	173	197
NATIONAL TOTAL	516	879	472	433	19	471	2,731	2,604

Throughput and Outstanding Workload for High Court Civil Cases - November 2008								
Court	Opening Balance	New Cases	Number of Cases Actioned			Closing Balance	Estimated Hearing Days	
			Heard	Before the day	On the day		Last Month	This Month
Auckland	286	34	23	26	-	271	1,631	1,576
Whangarei	10	2	-	-	-	12	50	50
Rotorua	21	2	1	1	1	20	123	112
Gisborne	1	-	-	-	-	1	2	2
New Plymouth	3	2	-	-	-	5	13	26
Hamilton	30	5	3	1	-	31	139	145
Auckland Circuit	351	45	27	28	1	340	1,958	1,910
Wellington	74	17	10	10	-	71	446	440
Napier	5	1	-	-	2	4	33	18
Palmerston North	2	-	-	-	-	2	15	15
Wanganui	3	-	1	-	-	2	7	2
Nelson	3	-	-	-	-	3	8	7
Blenheim	4	-	-	-	-	4	21	16
Wellington Circuit	91	18	11	10	2	86	528	497
Christchurch	32	8	5	2	-	33	119	122
Timaru	1	3	-	1	-	3	2	19
Dunedin	4	1	1	-	-	4	20	19
Invercargill	4	1	-	-	-	5	17	37
Greymouth	0	-	-	-	-	0	-	-
Christchurch Circuit	41	13	6	3	-	45	158	197
NATIONAL TOTAL	483	76	44	41	3	471	2,644	2,603

Throughput and Outstanding Workload for High Court Criminal Appeal Cases - December 2007 to November 2008								
Court	Opening Balance	New Cases	Number of Cases Actioned			Closing Balance	Estimated Hearing Days	
			Heard	Before the day	On the day		November 2007	November 2008
Auckland	31	105	89	14	8	37	16.0	18.5
Whangarei	10	41	34	7	4	6	2.2	1.2
Rotorua	10	103	79	15	-	19	5.5	7.5
Gisborne	3	16	8	2	-	9	1.0	2.0
New Plymouth	5	27	15	1	13	3	1.5	0.7
Hamilton	5	57	47	10	1	4	1.6	0.7
Auckland Circuit	64	349	272	49	26	78	27.80	30.60
Wellington	21	85	89	-	-	16	6.0	5.0
Napier	3	25	20	1	2	5	1.0	1.5
Palmerston North	6	40	30	8	1	7	1.4	1.6
Wanganui	7	17	19	3	-	2	1.0	1.0
Nelson	4	27	21	6	-	3	1.0	0.7
Blenheim	0	9	7	1	-	1	-	0.4
Wellington Circuit	41	203	186	19	3	34	10.4	10.2
Christchurch	14	173	159	17	0	11	4.3	2.5
Timaru	0	21	17	0	0	4	-	1.0
Dunedin	2	40	30	7	2	3	0.2	0.5
Invercargill	3	30	23	4	0	5	0.6	1.0
Greymouth	1	11	4	7	0	1	0.2	0.2
Christchurch Circuit	20	275	233	35	2	24	5.3	5.2
NATIONAL TOTAL	125	827	691	103	31	136	43.5	46.0

Throughput and Outstanding Workload for High Court Criminal Appeals - November 2008

Court	Opening Balance	New Cases	Number of Cases Actioned			Closing Balance	Estimated Hearing Days	
			Heard	Before the day	On the day		Last Month	This Month
Auckland	35	12	10	-	-	37	14.0	18.5
Whangarei	6	6	4	2	-	6	1.2	1.2
Rotorua	10	12	3	-	-	19	4.0	7.5
Gisborne	6	3	-	-	-	9	1.5	2.0
New Plymouth	7	2	-	-	6	3	1.5	0.7
Hamilton	6	2	3	1	-	4	1.0	0.7
Auckland Circuit	70	37	20	3	6	78	23.2	30.6
Wellington	16	4	4	-	-	16	5.0	5.0
Napier	1	6	2	-	-	5	0.5	1.5
Palmerston North	8	3	3	1	-	7	1.8	1.6
Wanganui	2	2	1	1	-	2	1.0	1.0
Nelson	5	2	2	2	-	3	1.2	0.7
Blenheim	1	-	-	-	-	1	0.4	0.4
Wellington Circuit	33	17	12	4	-	34	9.9	10.2
Christchurch	13	9	10	1	-	11	3.2	2.5
Timaru	3	1	-	-	-	4	1.2	1.0
Dunedin	5	3	5	-	-	3	0.5	0.5
Invercargill	4	4	2	1	-	5	1.6	1.0
Greymouth	0	1	-	-	-	1	-	0.2
Christchurch Circuit	25	18	17	2	-	24	6.5	5.2
NATIONAL TOTAL	128	72	49	9	6	136	39.6	46.0

Throughput and Outstanding Workload for High Court Civil & Family Appeals - December 2007 to November 2008

Court	Opening Balance	New Cases	Number of Cases Actioned			Closing Balance	Estimated Hearing Days	
			Heard	Before the day	On the day		November 2007	November 2008
Auckland	34	102	86	22	-	28	46.5	29.0
Whangarei	1	9	6	1	-	1	1.0	0.5
Rotorua	1	16	8	3	1	5	1.0	7.0
Gisborne	0	-	-	-	-	0	-	-
New Plymouth	4	8	7	2	1	2	3.5	1.5
Hamilton	15	11	18	6	-	2	16.0	4.0
Auckland Circuit	55	146	125	34	2	38	68.0	42.0
Wellington	21	76	56	18	-	22	21.5	18.4
Napier	1	7	5	1	-	2	0.5	1.0
Palmerston North	6	3	4	4	-	1	3.3	1.0
Wanganui	1	1	1	1	-	0	0.5	-
Nelson	2	3	3	-	-	2	0.9	1.0
Blenheim	0	3	1	-	-	2	-	1.5
Wellington Circuit	31	93	70	24	-	29	26.7	22.9
Christchurch	1	28	17	4	-	8	1.0	8.0
Timaru	1	-	1	-	-	0	0.6	-
Dunedin	0	3	3	-	-	0	-	-
Invercargill	0	3	1	-	1	1	-	0.6
Greymouth	0	-	-	-	-	0	-	-
Christchurch Circuit	2	34	22	4	1	9	1.6	8.6
NATIONAL TOTAL	88	273	217	62	3	76	96.3	73.5

Throughput and Outstanding Workload for High Court Civil & Family Appeals - November 2008								
Court	Opening Balance	New Cases	Number of Cases Actioned			Closing Balance	Estimated Hearing Days	
			Heard	Before the day	On the day		Last Month	This Month
Auckland	39	7	16	2	-	28	35	29
Whangarei	1	-	-	-	-	1	1.0	0.5
Rotorua	6	-	-	1	-	5	7.5	7
Gisborne	0	-	-	-	-	0	-	-
New Plymouth	2	1	-	-	1	2	1.50	1.5
Hamilton	3	2	3	-	-	2	5.0	4.0
Auckland Circuit	51	10	19	3	1	38	49.5	42.0
Wellington	24	6	5	3	-	22	22.5	18.4
Napier	1	1	-	-	-	2	0.5	1.0
Palmerston North	1	-	-	-	-	1	1.0	1.0
Wanganui	1	-	1	-	-	0	2.0	-
Nelson	2	-	-	-	-	2	1.0	1.0
Blenheim	2	-	-	-	-	2	1.5	1.5
Wellington Circuit	31	7	6	3	-	29	28.5	22.9
Christchurch	5	4	1	-	-	8	5.8	8.0
Timaru	0	-	-	-	-	0	-	-
Dunedin	0	-	-	-	-	0	-	-
Invercargill	1	-	-	-	-	1	0.6	0.6
Greymouth	0	-	-	-	-	0	-	-
Christchurch Circuit	6	4	1	-	-	9	6.4	8.6
NATIONAL TOTAL	88	21	26	6	1	76	84.4	73.5

High Court Business On Hand Summary

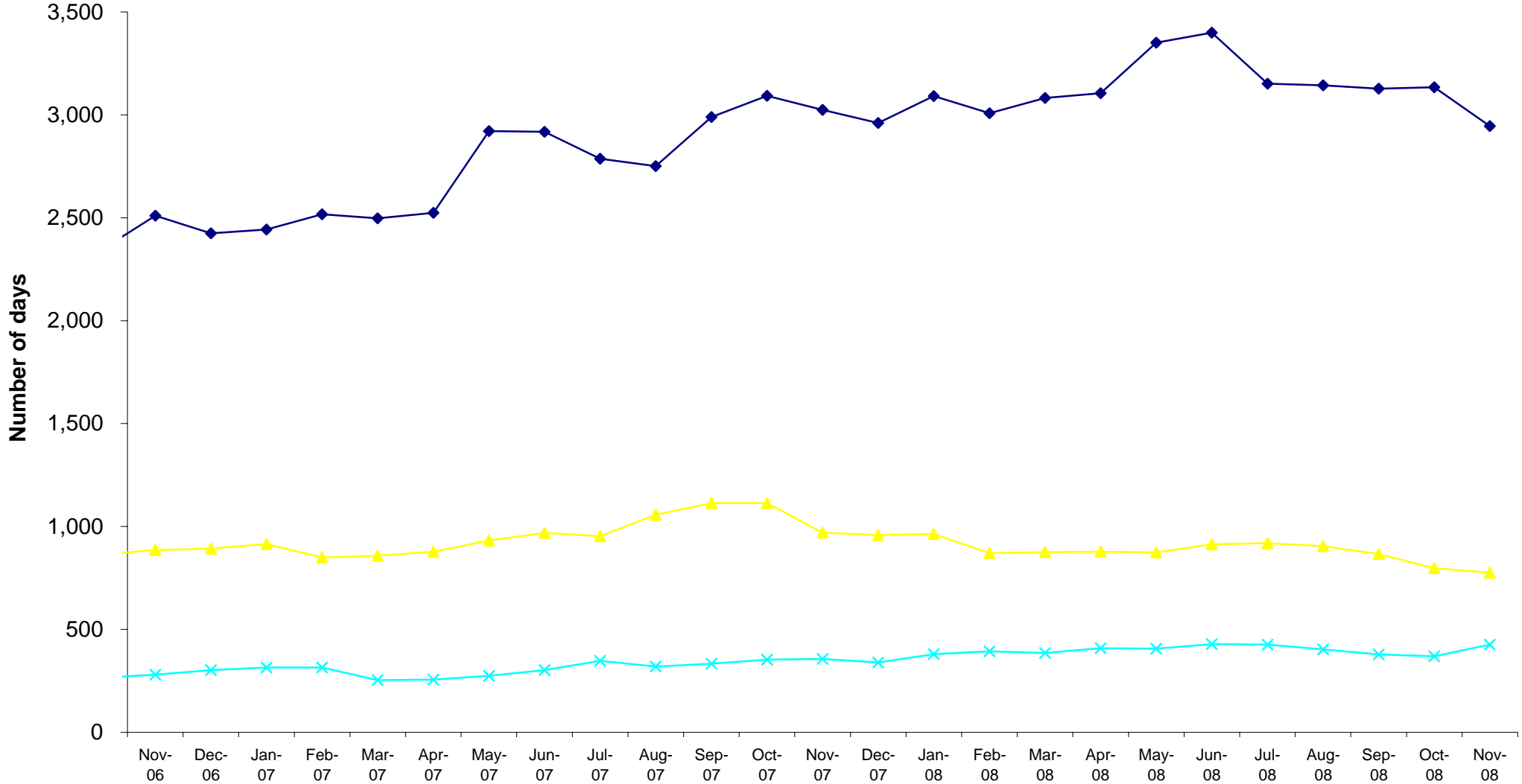
Comparative Quarterly Figures for the Year Ending 30 September 2008

Comparative Monthly Figures for the Four Months to 30 November 2008

ESTIMATED SITTING DAYS								
Work on hand in estimated sitting days for all criminal trials, civil cases, cases stated and appeals (criminal, civil, family, tribunals and administrative)								
High Court	Quarterly				Months			
	Dec-07	Mar-08	Jun-08	Sep-08	Aug-08	Sep-08	Oct-08	Nov-08
Auckland	2,393.0	2,393.5	2,682.6	2,431.5	2,483.1	2,431.5	2,433.5	2,294.0
Whangarei	79.3	108.6	115.2	95.0	102.7	95.0	92.2	99.7
Gisborne	22.0	18.0	13.3	24.1	20.5	24.1	23.5	12.0
Rotorua	250.3	294.0	340.0	344.0	323.5	344.0	342.5	288.0
New Plymouth	34.3	27.8	22.6	35.4	29.0	35.4	38.0	50.2
Hamilton	181.4	240.0	226.2	197.8	184.8	197.8	204.0	201.2
Auckland Circuit	2,960.3	3,081.9	3,399.9	3,127.8	3,143.6	3,127.8	3,133.7	2,945.1
Wellington	680.9	636.8	701.4	646.9	695.0	646.9	586.3	584.7
Palmerston North	47.6	55.8	79.6	50.6	58.0	50.6	45.8	68.6
Napier	117.5	108.0	64.0	44.5	50.0	44.5	63.5	47.5
Wanganui	10.5	6.5	6.0	23.0	22.0	23.0	32.5	25.5
Nelson	77.7	38.5	46.9	60.0	59.3	60.0	43.7	28.2
Blenheim	24.0	29.2	15.4	40.9	19.6	40.9	25.9	20.9
Wellington Circuit	958.2	874.8	913.3	865.9	903.9	865.9	797.7	775.4
Christchurch	230.5	248.1	269.9	273.0	280.4	273.0	242.8	267.1
Greymouth	0.2	2.5	2.0	0.0	0.0	0.0	15.0	15.2
Dunedin	92.4	106.5	88.2	64.6	82.4	64.6	63.7	62.7
Timaru	4.1	11.5	43.2	14.0	13.2	14.0	20.2	34.6
Invercargill	11.6	16.4	25.2	27.2	26.4	27.2	27.2	46.6
Christchurch Circuit	338.8	385.0	428.5	378.8	402.4	378.8	368.9	426.2
NATIONAL TOTAL	4,257.3	4,341.7	4,741.7	4,372.5	4,449.9	4,372.5	4,300.3	4,146.7

High Court Business on Hand Summary

Estimated Sitting Days - November 2006 to November 2008
 for all criminal trials, civil cases, cases stated and appeals (criminal, civil, family, tribunals and administrative)



	Oct-06	Nov-06	Dec-06	Jan-07	Feb-07	Mar-07	Apr-07	May-07	Jun-07	Jul-07	Aug-07	Sep-07	Oct-07	Nov-07	Dec-07	Jan-08	Feb-08	Mar-08	Apr-08	May-08	Jun-08	Jul-08	Aug-08	Sep-08	Oct-08	Nov-08
◆ Auckland Circuit	2,339.0	2,510.0	2,424.8	2,443.4	2,517.0	2,497.3	2,524.0	2,921.3	2,917.6	2,787.2	2,750.9	2,989.3	3,093.0	3,023.9	2,960.3	3,091.2	3,007.9	3,081.9	3,105.3	3,351.0	3,399.9	3,151.5	3,143.6	3,127.8	3,133.7	2,945.1
▲ Wellington Circuit	862.4	886.3	892.8	915.2	849.3	858.3	877.6	932.3	968.9	952.4	1,056.8	1,113.8	1,114.2	970.2	958.2	963.0	870.7	874.8	877.6	874.5	913.3	919.9	903.9	865.9	797.7	775.4
× Christchurch Circuit	264.3	279.7	301.9	315.2	315.4	253.1	256.3	274.2	302.0	347.6	319.6	333.8	352.7	356.3	338.8	379.3	393.9	385.0	408.7	406.1	428.5	426.2	402.4	378.8	368.9	426.2