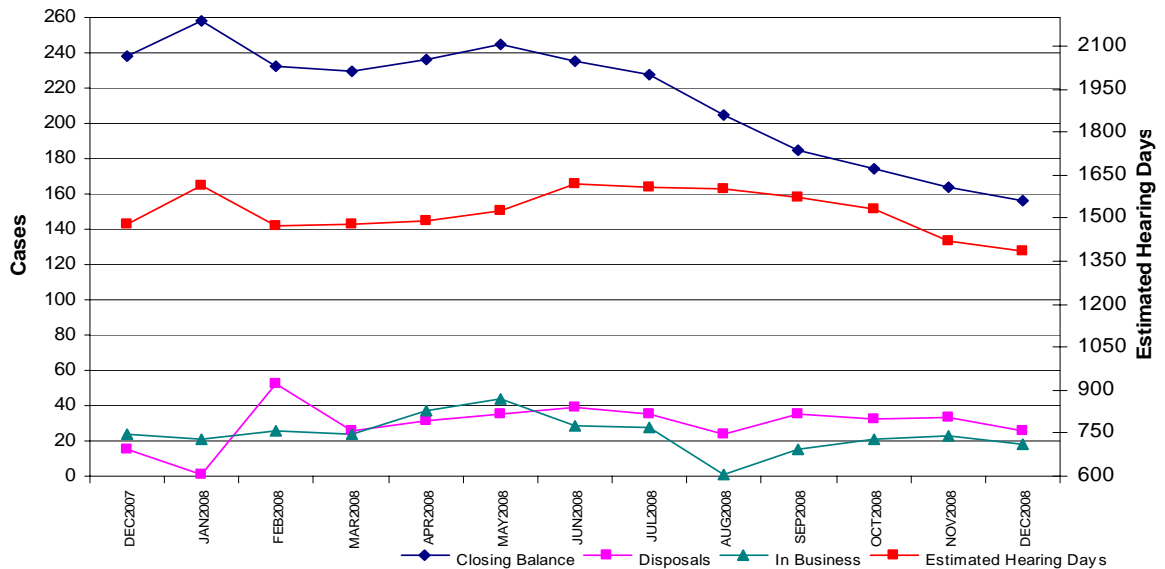


HIGH COURT WORKLOAD – DECEMBER 2008

High Court: Jury Trials

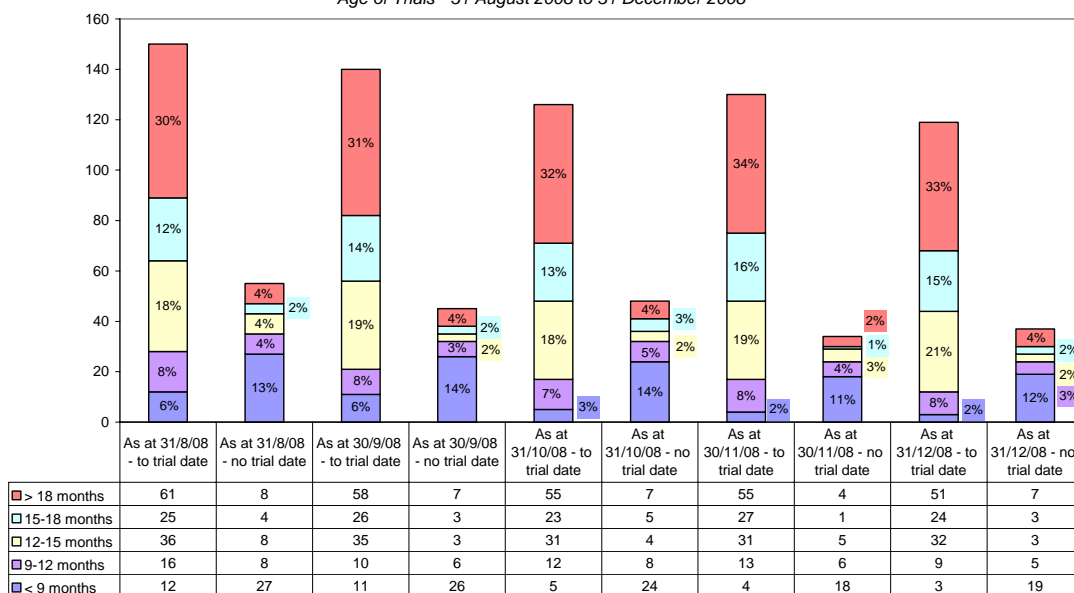


The number of trials on hand as at 31 December 2008 was 156, down 8 trials from 30 November 2008 (164) and down 34% from the 238 trials on hand as at 31 December 2007. The estimated hearing days required to hear these trials is 1383 days compared with 1482 as at 31 December 2007.

The total number of jury trials disposed of in December 2008 was 26, compared with 15 in December 2007. These include trials that were heard, mistrials, warrants issued and hung juries. Eighteen new trials were received during December 2008, down 25% from the 24 trials received in December 2007.

[Clearance rate for December 2008 = 1:1.44]

High Court Criminal Jury Trials
Age of Trials - 31 August 2008 to 31 December 2008



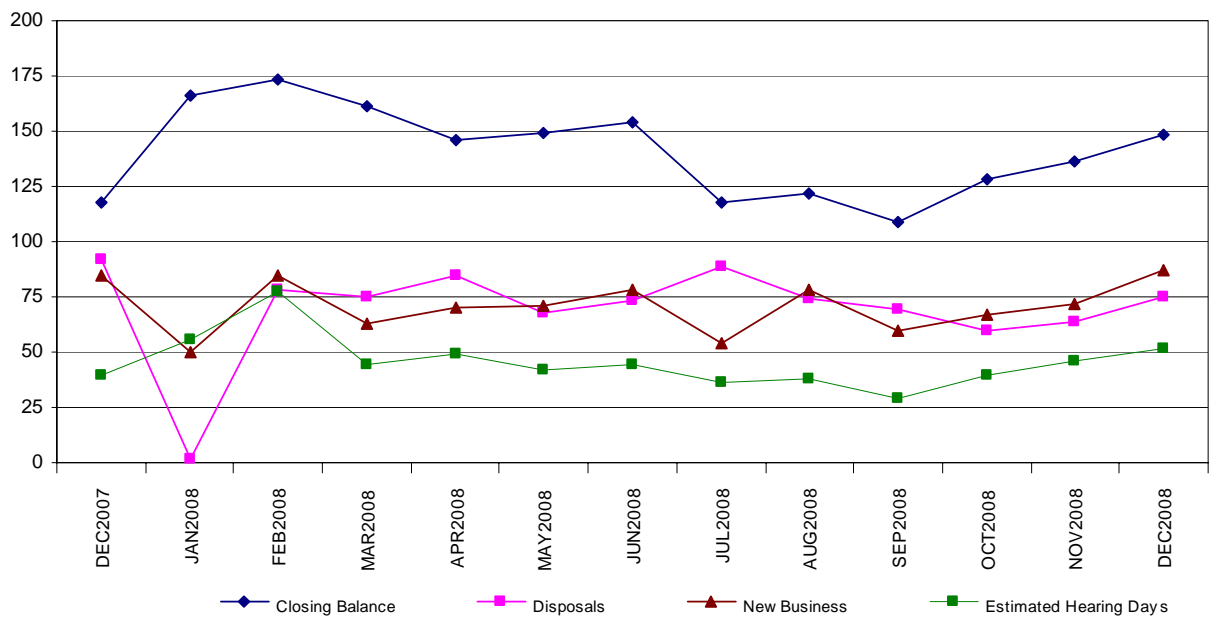
Yearly comparison of Criminal Jury Trials on hand

Circuit	December 2004	December 2005	December 2006	December 2007	December 2008
Auckland	92	131	173	166	102
Wellington	25	44	51	53	35
Christchurch	28	18	22	19	19
National Total	145	193	246	238	156

Yearly comparison of estimated sitting days for Criminal Jury Trials on hand

Circuit	December 2004	December 2005	December 2006	December 2007	December 2008
Auckland	642	928	1268	983	901
Wellington	149	279	280	317	272
Christchurch	144	113	118	182	210
National Total	935	1320	1666	1482	1383

High Court: Criminal Appeals



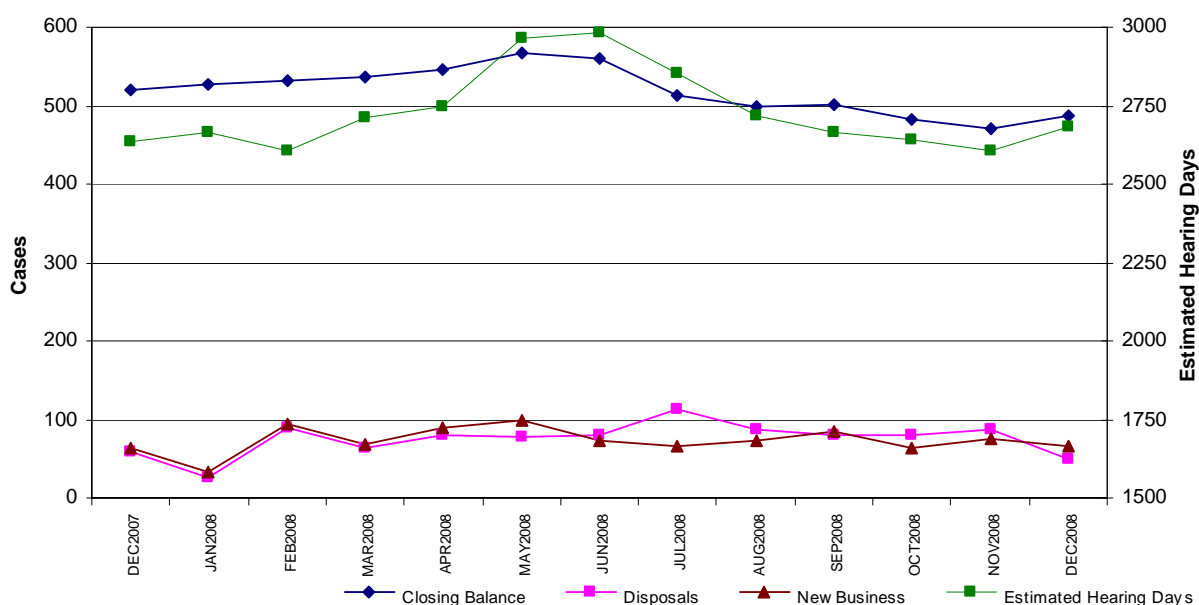
As at 31 December 2008, 148 criminal appeals were on hand, compared to 118 at 31 December 2007 (up 25%). The number of estimated hearing days required to dispose of the appeals on hand at the end of December 2008 was 52 days, compared with 40 days at the end of December 2007.

There were 75 disposals in December 2008, down from 99 disposals in December 2007.

There were 87 new criminal appeals received in December 2008, an increase of 2% from 85 new appeals in December 2007.

[Clearance rate for December 2008 = 1:0.86]

High Court: Civil Proceedings



As at 31 December 2008, outstanding civil proceedings numbered 488, a decrease of 6% from the 521 on hand as at the end of December 2007. As at the end of December 2008 there were 2685 hearing days estimated to be required, up from the 2635 noted in December 2007.

New business for the month of December 2008 was 67, an increase of 6% on the 63 in December 2007. Disposals in December 2008 numbered 50, a decrease of 14% on 58 in December 2007.

[Clearance rate for December 2008 = 1:0.75]

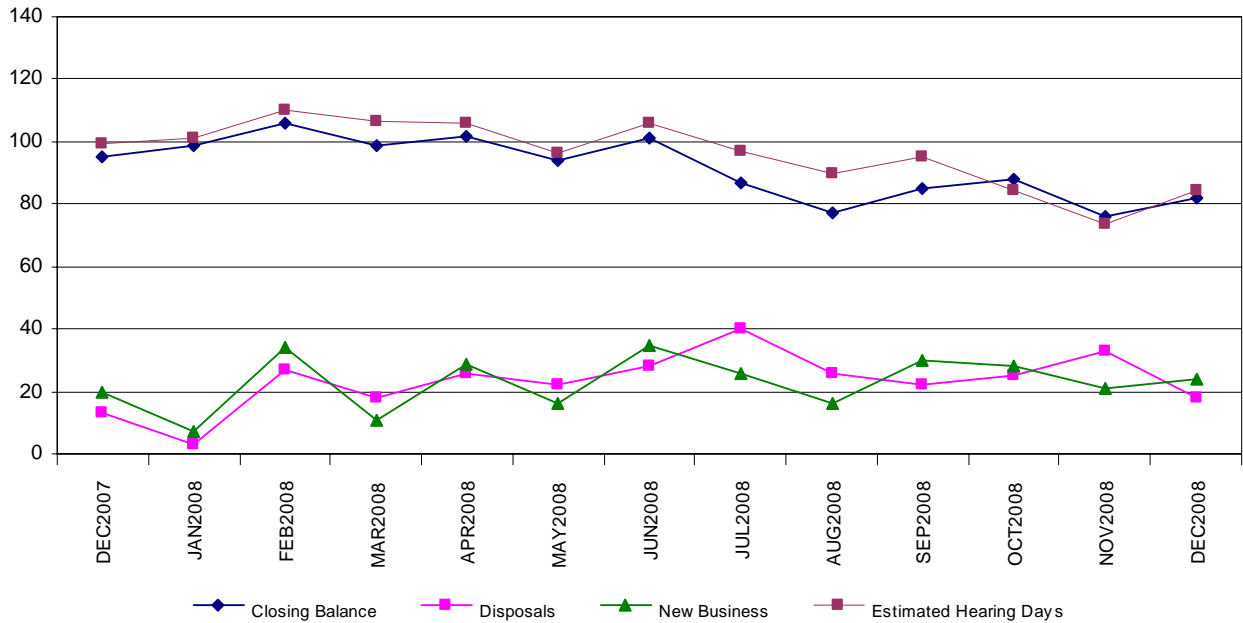
Yearly comparison of Civil Proceedings on hand

Circuit	December 2004	December 2005	December 2006	December 2007	December 2008
Auckland	229	248	229	361	350
Wellington	92	117	128	119	91
Christchurch	50	34	36	41	47
National Total	371	399	393	521	488

Yearly comparison of estimated sitting days for Civil Proceedings on hand

Circuit	December 2004	December 2005	December 2006	December 2007	December 2008
Auckland	1133	1285	1102	1889	1988
Wellington	316	444	550	602	504
Christchurch	172	116	157	144	193
National Total	1541	1845	1809	2635	2685

High Court: Civil Appeals



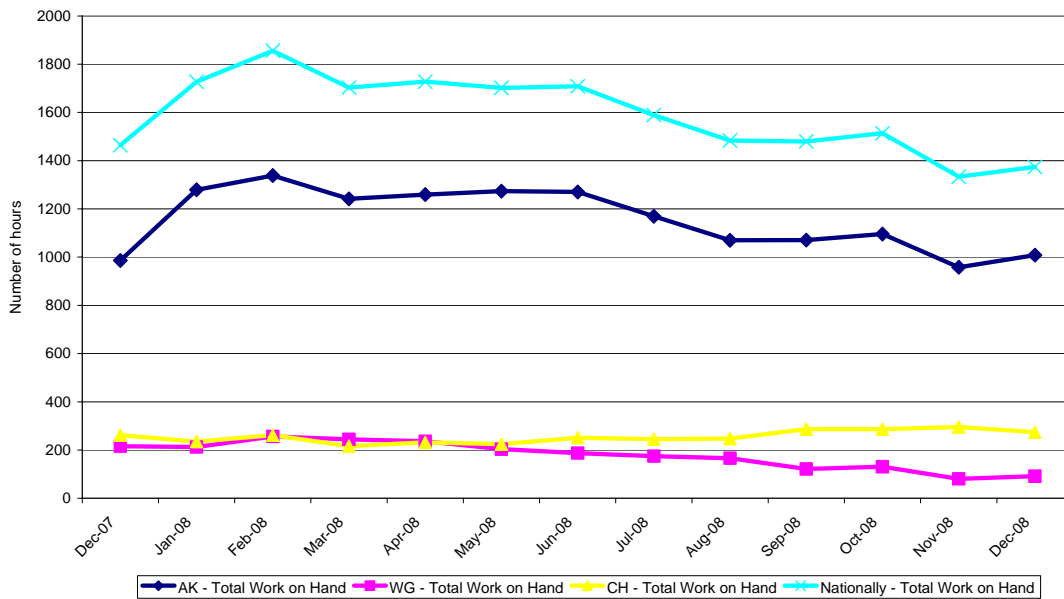
As at 31 December 2008, 82 civil appeals were on hand, a decrease of 14% from 95 as at 31 December 2007. The number of estimated hearing days required to dispose of the appeals on hand at the end of December 2008 was 84 days, compared with 100 days at the end of December 2007.

There were 18 disposals in December 2008, down from 13 disposals in December 2007.

There were 24 new civil appeals received in December 2008, an increase of 20% from 20 new appeals in December 2007.

[Clearance rate for December 2008 = 1:0.75]

Workload of Associate Judges - Circuit and National - December 2007 to December 2008



Throughput and Outstanding Workload for High Court Criminal Jury Trials - January 2008 to December 2008																				
Court	Opening Balance	New Business	Retrials Directed	Transfers In	Warrants Executed	Number of Cases Disposed			Warrants Issued	Transfers out	Merged/ Deleted	Hung Juries	Mis-trials	Closing Balance	Age of Outstanding Cases - Months					Estimated Hearing Days
						Heard	Before the day	On the day							< 3	3-6	6-9	9-12	> 12	
Auckland	94	98	13	1	3	54	46	17	1	7	9	6	5	64	0	2	12	9	41	631
Whangarei	10	14	-	0	1	5	4	6	2	0	1	0	0	7	0	2	1	3	1	48
Rotorua	33	29	3	0	0	19	13	4	0	8	1	2	1	17	0	1	2	4	10	145
Gisborne	3	3	-	0	0	3	1	0	0	0	0	0	0	2	0	0	2	0	0	8
New Plymouth	4	5	-	0	0	3	2	2	0	0	0	0	0	2	0	0	1	1	0	17
Hamilton	22	35	5	0	0	9	19	11	0	6	2	4	1	10	0	2	0	1	7	52
Auckland Circuit	166	184	21	1	4	93	85	40	3	21	13	12	7	102	0	7	18	18	59	901
Wellington	23	26	-	0	0	11	12	9	0	1	3	0	0	13	0	1	1	5	6	113
Napier	15	12	1	0	1	12	4	4	0	0	1	1	0	7	0	1	4	1	1	40
Palmerston North	7	9	1	1	0	7	2	0	1	0	0	1	0	7	0	0	0	2	5	81
Wanganui	2	4	1	0	0	1	2	0	0	0	0	0	0	4	0	0	1	1	2	23
Nelson	4	5	-	0	0	5	1	0	0	0	0	0	0	3	0	0	1	1	1	12
Blenheim	2	2	-	0	0	2	1	0	0	0	0	0	0	1	0	0	0	1	0	3
Wellington Circuit	53	58	3	1	1	38	22	13	1	1	4	2	0	35	0	2	7	11	15	272
Christchurch	16	19	2	3	0	8	16	3	1	2	1	0	0	9	0	0	3	2	4	144
Timaru	0	6	-	0	0	0	1	1	0	1	0	0	0	3	0	0	1	1	1	15
Dunedin	3	7	-	0	0	1	3	0	0	3	0	0	0	3	0	0	0	1	2	28
Invercargill	0	3	-	0	0	0	1	0	0	0	0	0	0	2	0	0	0	1	1	8
Greymouth	0	2	-	0	0	0	0	0	0	0	0	0	0	2	0	0	2	0	0	15
Christchurch Circuit	19	37	2	3	0	9	21	4	1	6	1	0	0	19	0	0	6	5	8	210
NATIONAL TOTAL	238	279	26	5	5	140	128	57	5	28	18	14	7	156	0	9	31	34	82	1,383

Notes:

- 1) Transfer out refers to the transfer of another trial within the same Jurisdiction and a transfer of a trial to another Jurisdiction.
- 2) In calculating the closing balance for an individual court, the cases transferred out are considered to be disposed.



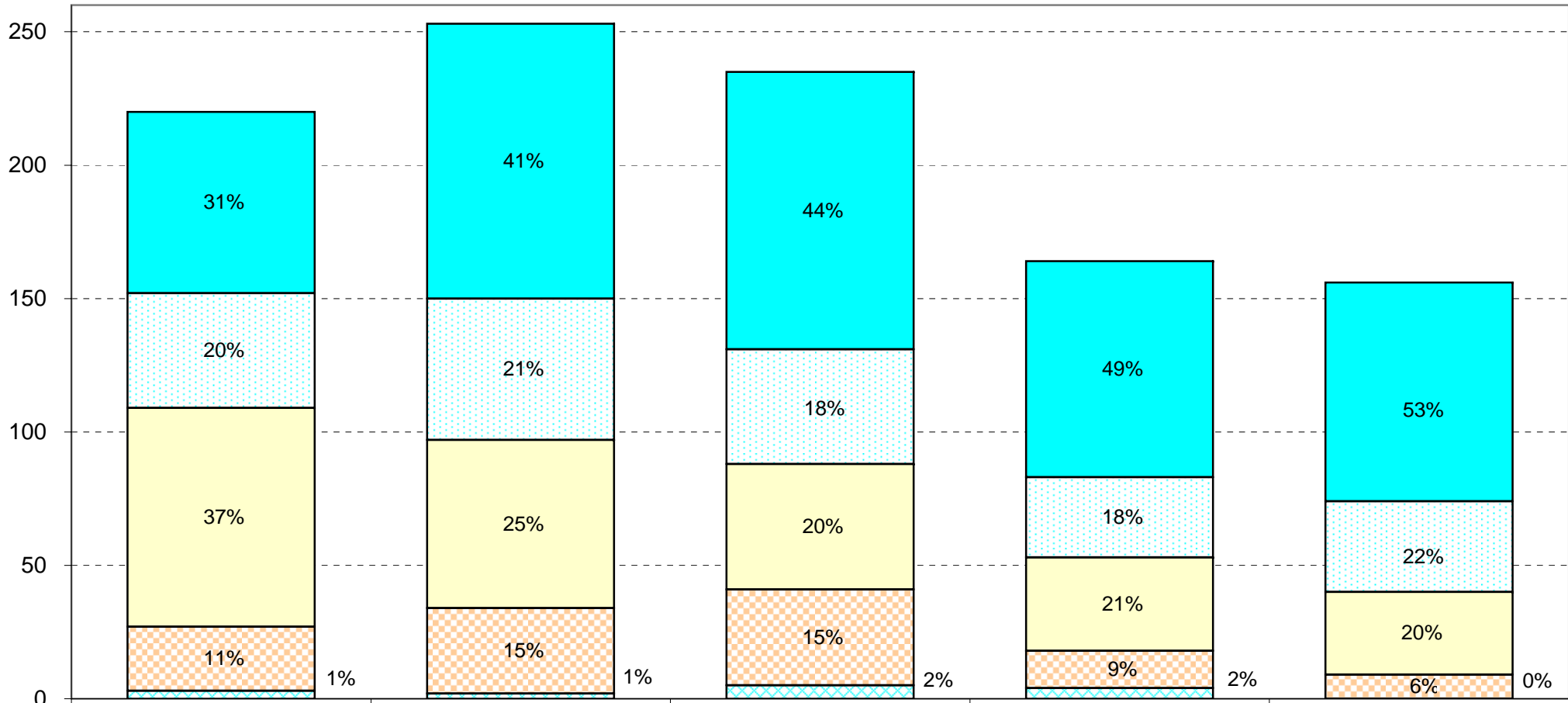
Court	Throughput and Outstanding Workload for High Court Criminal Jury Trials - December 2008 (Manual)																			
	Opening Balance	New Business	Retrials Directed	Transfers In	Warrants Executed	Number of Cases Disposed			Warrants Issued	Transfer out	Merged/ Deleted	Hung Juries	Mis-trials	Closing Balance	Age of Outstanding Cases - Months					Estimated Hearing Days
						Heard	Before the day	On the day							< 3	3-6	6-9	9-12	> 12	
Auckland	70	6	0	0	0	7	3	1	0	0	1	0	0	64	0	2	12	9	41	631
Whangarei	7	0	0	0	1	0	1	0	0	0	0	0	0	7	0	2	1	3	1	48
Rotorua	20	0	0	0	0	0	3	0	0	0	0	0	0	17	0	1	2	4	10	145
Gisborne	2	0	0	0	0	0	0	0	0	0	0	0	0	2	0	0	2	0	0	8
New Plymouth	3	0	0	0	0	0	1	0	0	0	0	0	0	2	0	0	1	1	0	17
Hamilton	11	2	0	0	0	1	2	0	0	0	0	0	0	10	0	2	0	1	7	52
Auckland Circuit	113	8	0	0	1	8	10	1	0	0	1	0	0	102	0	7	18	18	59	901
Wellington	15	1	0	0	0	1	1	1	0	0	0	0	0	13	0	1	1	5	6	113
Napier	4	2	0	0	1	0	0	0	0	0	0	0	0	7	0	1	4	1	1	40
Palmerston North	6	1	0	0	0	0	0	0	0	0	0	0	0	7	0	0	0	2	5	81
Wanganui	4	0	0	0	0	0	0	0	0	0	0	0	0	4	0	0	1	1	2	23
Nelson	4	0	0	0	0	1	0	0	0	0	0	0	0	3	0	0	1	1	1	12
Blenheim	1	0	0	0	0	0	0	0	0	0	0	0	0	1	0	0	0	1	0	3
Wellington Circuit	34	4	0	0	1	2	1	1	0	0	0	0	0	35	0	2	7	11	15	272
Christchurch	6	4	0	0	0	1	0	0	0	0	0	0	0	9	0	0	3	2	4	144
Timaru	3	0	0	0	0	0	0	0	0	0	0	0	0	3	0	0	1	1	1	15
Dunedin	4	0	0	0	0	1	0	0	0	0	0	0	0	3	0	0	0	1	2	28
Invercargill	2	0	0	0	0	0	0	0	0	0	0	0	0	2	0	0	0	1	1	8
Greymouth	2	0	0	0	0	0	0	0	0	0	0	0	0	2	0	0	2	0	0	15
Christchurch Circuit	17	4	0	0	0	2	0	0	0	0	0	0	0	19	0	0	6	5	8	210
NATIONAL TOTAL	164	16	0	0	2	12	11	2	0	0	1	0	0	156	0	9	31	34	82	1383

Notes:

- 1) Transfer out refers to the transfer of another trial within the same Jurisdiction and a transfer of a trial to another Jurisdiction.
- 2) In calculating the closing balance for an individual court, the cases transferred out are considered to be disposed.
- 3) All numbers have been manually calculated in the absence of CMS reports



High Court Criminal Jury Trials
Ages of Cases on Hand



	As at 30 June 2006	As at 30 June 2007	As at 30 June 2008	As at 30 November 2008	As at 31 December 2008
■ > 12 months	68	103	104	81	82
▨ 9-12 months	43	53	43	30	34
■ 6-9 months	82	63	47	35	31
▨ 3-6 months	24	32	36	14	9
▨ < 3 months	3	2	5	4	0

Throughput and Outstanding Workload for High Court Civil Cases - January 2008 to December 2008								
Court	Opening Balance	New Cases	Number of Cases Actioned			Closing Balance	Estimated Hearing Days	
			Heard	Before the day	On the day		December 2007	December 2008
Auckland	301	434	207	244	-	284	1,662	1,674
Whangarei	11	13	5	6	3	10	45	40
Rotorua	19	38	17	15	2	23	87	132
Gisborne	2	3	1	3	1	0	5	-
New Plymouth	6	9	2	6	3	4	17	24
Hamilton	22	53	14	31	1	29	74	119
Auckland Circuit	361	550	246	305	10	350	1,889	1,988
Wellington	99	187	136	78	-	72	512	438
Napier	7	14	9	4	4	4	29	14
Palmerston North	1	6	1	2	-	4	10	21
Wanganui	1	6	5	-	-	2	1	3
Nelson	8	7	5	5	-	5	35	13
Blenheim	3	6	1	4	-	4	16	16
Wellington Circuit	119	226	157	93	4	91	602	504
Christchurch	30	83	52	25	3	33	108	114
Timaru	1	4	-	2	-	3	3	19
Dunedin	7	14	6	6	2	7	23	27
Invercargill	3	6	3	1	1	4	10	34
Greymouth	0	-	-	-	-	0	-	-
Christchurch Circuit	41	107	61	34	6	47	144	194
NATIONAL TOTAL	521	883	464	432	20	488	2,636	2,686

Throughput and Outstanding Workload for High Court Civil Cases - December 2008								
Court	Opening Balance	New Cases	Number of Cases Actioned			Closing Balance	Estimated Hearing Days	
			Heard	Before the day	On the day		Last Month	This Month
Auckland	271	33	8	12	-	284	1,576	1,674
Whangarei	12	-	-	1	1	10	50	40
Rotorua	20	5	-	2	-	23	112	132
Gisborne	1	-	-	1	-	0	2	-
New Plymouth	5	-	-	-	1	4	26	24
Hamilton	31	2	2	2	-	29	145	119
Auckland Circuit	340	40	10	18	2	350	1,910	1,988
Wellington	71	11	7	3	-	72	440	438
Napier	4	1	-	1	-	4	18	14
Palmerston North	2	2	-	-	-	4	15	21
Wanganui	2	-	-	-	-	2	2	3
Nelson	3	2	-	-	-	5	7	13
Blenheim	4	-	-	-	-	4	16	16
Wellington Circuit	86	16	7	4	-	91	497	504
Christchurch	33	7	6	1	-	33	122	114
Timaru	3	-	-	-	-	3	19	19
Dunedin	4	4	1	-	-	7	19	27
Invercargill	5	-	1	-	-	4	37	34
Greymouth	0	-	-	-	-	0	-	-
Christchurch Circuit	45	11	8	1	-	47	197	194
NATIONAL TOTAL	471	67	25	23	2	488	2,604	2,685

Throughput and Outstanding Workload for High Court Criminal Appeal Cases - January 2008 to December 2008								
Court	Opening Balance	New Cases	Number of Cases Actioned			Closing Balance	Estimated Hearing Days	
			Heard	Before the day	On the day		December 2007	December 2008
Auckland	27	139	91	18	8	49	11.0	24.0
Whangarei	12	42	36	8	4	6	3.0	1.2
Rotorua	8	104	85	15	-	12	3.3	5.0
Gisborne	0	16	9	2	-	5	-	2.0
New Plymouth	2	35	12	-	21	4	1.3	1.4
Hamilton	2	53	41	9	-	5	0.4	1.3
Auckland Circuit	51	389	274	52	33	81	19.00	34.90
Wellington	24	89	89	-	-	24	8.0	7.0
Napier	5	25	23	1	1	5	2.0	1.0
Palmerston North	5	40	28	8	1	8	1.2	1.8
Wanganui	2	17	11	4	-	4	0.5	1.5
Nelson	3	21	16	6	-	2	0.8	0.5
Blenheim	0	8	7	1	-	0	-	-
Wellington Circuit	39	200	174	20	2	43	12.5	11.8
Christchurch	17	167	151	17	0	16	5.7	3.5
Timaru	1	20	19	0	0	2	0.5	0.5
Dunedin	4	35	26	8	2	3	1.0	0.5
Invercargill	5	33	32	4	0	2	1.0	0.4
Greymouth	1	11	4	7	0	1	0.2	0.2
Christchurch Circuit	28	266	232	36	2	24	8.4	5.1
NATIONAL TOTAL	118	855	680	108	37	148	39.9	51.8

Throughput and Outstanding Workload for High Court Criminal Appeals - December 2008

Court	Opening Balance	New Cases	Number of Cases Actioned			Closing Balance	Estimated Hearing Days	
			Heard	Before the day	On the day		Last Month	This Month
Auckland	37	16	1	3	-	49	18.5	24.0
Whangarei	6	5	4	1	-	6	1.2	1.2
Rotorua	19	5	12	-	-	12	7.5	5.0
Gisborne	9	-	4	-	-	5	2.0	2.0
New Plymouth	3	9	-	-	8	4	0.7	1.4
Hamilton	4	5	4	-	-	5	0.7	1.3
Auckland Circuit	78	40	25	4	8	81	30.6	34.9
Wellington	16	13	5	-	-	24	5.0	7.0
Napier	5	3	3	-	-	5	1.5	1.0
Palmerston North	7	2	1	-	-	8	1.6	1.8
Wanganui	2	3	-	1	-	4	1.0	1.5
Nelson	3	2	3	-	-	2	0.7	0.5
Blenheim	1	-	1	-	-	0	0.4	-
Wellington Circuit	34	23	13	1	-	43	10.2	11.8
Christchurch	11	19	14	-	-	16	2.5	3.5
Timaru	4	-	2	-	-	2	1.0	0.5
Dunedin	3	2	-	2	-	3	0.5	0.5
Invercargill	5	3	6	-	-	2	1.0	0.4
Greymouth	1	-	-	-	-	1	0.2	0.2
Christchurch Circuit	24	24	22	2	-	24	5.2	5.1
NATIONAL TOTAL	136	87	60	7	8	148	46.0	51.8

Throughput and Outstanding Workload for High Court Civil & Family Appeals - January 2008 to December 2008								
Court	Opening Balance	New Cases	Number of Cases Actioned			Closing Balance	Estimated Hearing Days	
			Heard	Before the day	On the day		December 2007	December 2008
Auckland	41	97	87	22	-	29	52.0	33.5
Whangarei	1	8	6	1	-	2	1.0	1.0
Rotorua	2	17	8	3	2	6	1.5	7.5
Gisborne	0	-	-	-	-	0	-	-
New Plymouth	2	9	5	4	1	1	1.5	1.0
Hamilton	16	10	19	6	-	1	13.0	0.5
Auckland Circuit	62	141	125	36	3	39	69.0	43.5
Wellington	21	79	58	17	-	24	22.0	24.0
Napier	1	10	6	1	-	4	0.5	3.5
Palmerston North	3	4	2	3	-	2	2.0	2.0
Wanganui	1	1	1	1	-	0	0.5	-
Nelson	2	5	3	-	-	4	0.9	2.5
Blenheim	0	3	1	-	-	2	-	1.5
Wellington Circuit	28	102	71	22	-	36	25.9	33.5
Christchurch	3	26	20	4	-	5	3.0	6.2
Timaru	1	1	1	-	-	1	0.6	0.6
Dunedin	0	3	3	-	-	0	-	-
Invercargill	1	2	1	-	1	1	1.0	0.6
Greymouth	0	-	-	-	-	0	-	-
Christchurch Circuit	5	32	25	4	1	7	4.6	7.4
NATIONAL TOTAL	95	275	221	62	4	82	99.5	84.4

Throughput and Outstanding Workload for High Court Civil & Family Appeals - December 2008								
Court	Opening Balance	New Cases	Number of Cases Actioned			Closing Balance	Estimated Hearing Days	
			Heard	Before the day	On the day		Last Month	This Month
Auckland	28	5	4	-	-	29	29	34
Whangarei	1	1	-	-	-	2	0.5	1.0
Rotorua	5	2	-	-	1	6	7.0	8
Gisborne	0	-	-	-	-	0	-	-
New Plymouth	2	1	-	2	-	1	1.50	1.0
Hamilton	2	1	2	-	-	1	4.0	0.5
Auckland Circuit	38	10	6	2	1	39	42.0	43.5
Wellington	22	7	4	1	-	24	18.4	24.0
Napier	2	3	1	-	-	4	1.0	3.5
Palmerston North	1	1	-	-	-	2	1.0	2.0
Wanganui	0	-	-	-	-	0	-	-
Nelson	2	2	-	-	-	4	1.0	2.5
Blenheim	2	-	-	-	-	2	1.5	1.5
Wellington Circuit	29	13	5	1	-	36	22.9	33.5
Christchurch	8	-	3	-	-	5	8.0	6.2
Timaru	0	1	-	-	-	1	-	0.6
Dunedin	0	-	-	-	-	0	-	-
Invercargill	1	-	-	-	-	1	0.6	0.6
Greymouth	0	-	-	-	-	0	-	-
Christchurch Circuit	9	1	3	-	-	7	8.6	7.4
NATIONAL TOTAL	76	24	14	3	1	82	73.5	84.4

High Court Business On Hand Summary

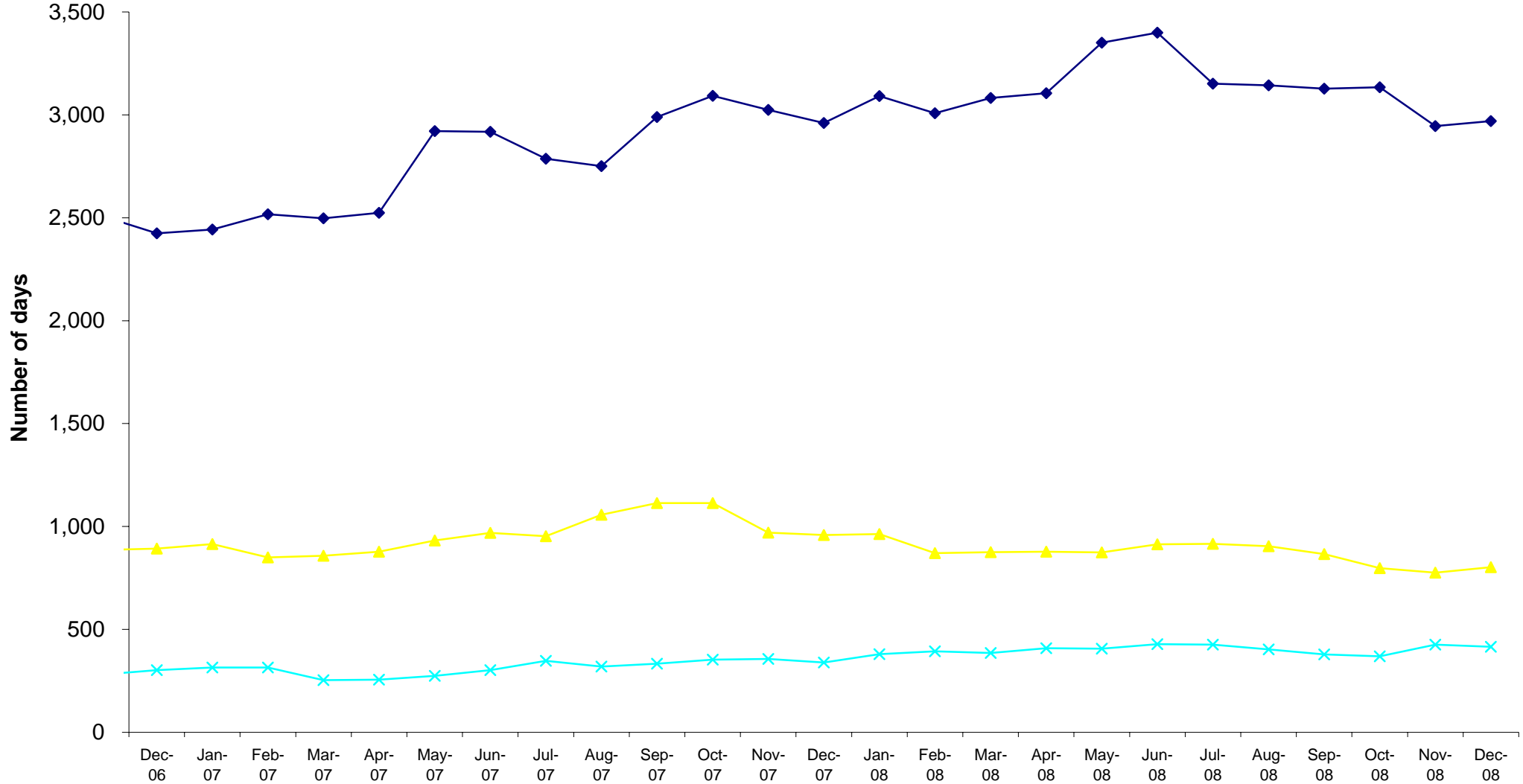
Comparative Quarterly Figures for the Year Ending 31 December 2008

Comparative Monthly Figures for the Four Months to 31 December 2008

ESTIMATED SITTING DAYS								
Work on hand in estimated sitting days for all criminal trials, civil cases, cases stated and appeals (criminal, civil, family, tribunals and administrative)								
High Court	Quarterly				Months			
	Mar-08	Jun-08	Sep-08	Dec-08	Sep-08	Oct-08	Nov-08	Dec-08
Auckland	2,393.5	2,682.6	2,431.5	2,362.5	2,431.5	2,433.5	2,294.0	2,362.5
Whangarei	108.6	115.2	95.0	90.2	95.0	92.2	99.7	90.2
Gisborne	18.0	13.3	24.1	10.0	24.1	23.5	12.0	10.0
Rotorua	294.0	340.0	344.0	291.0	344.0	342.5	288.0	291.0
New Plymouth	27.8	22.6	35.4	43.4	35.4	38.0	50.2	43.4
Hamilton	240.0	226.2	197.8	172.3	197.8	204.0	201.2	172.3
Auckland Circuit	3,081.9	3,399.9	3,127.8	2,969.4	3,127.8	3,133.7	2,945.1	2,969.4
Wellington	636.8	701.4	646.9	562.3	646.9	586.3	584.7	562.3
Palmerston North	55.8	79.6	50.6	106.3	50.6	45.8	68.6	106.3
Napier	108.0	64.0	44.5	58.5	44.5	63.5	47.5	58.5
Wanganui	6.5	6.0	23.0	27.0	23.0	32.5	25.5	27.0
Nelson	38.5	46.9	60.0	27.5	60.0	43.7	28.2	27.5
Blenheim	29.2	15.4	40.9	20.5	40.9	25.9	20.9	20.5
Wellington Circuit	874.8	913.3	865.9	802.1	865.9	797.7	775.4	802.1
Christchurch	248.1	269.9	273.0	267.5	273.0	242.8	267.1	267.5
Greymouth	2.5	2.0	0.0	15.2	0.0	15.0	15.2	15.2
Dunedin	106.5	88.2	64.6	55.5	64.6	63.7	62.7	55.5
Timaru	11.5	43.2	14.0	34.7	14.0	20.2	34.6	34.7
Invercargill	16.4	25.2	27.2	43.0	27.2	27.2	46.6	43.0
Christchurch Circuit	385.0	428.5	378.8	415.9	378.8	368.9	426.2	415.9
NATIONAL TOTAL	4,341.7	4,741.7	4,372.5	4,187.4	4,372.5	4,300.3	4,146.7	4,187.4

High Court Business on Hand Summary

Estimated Sitting Days - December 2006 to December 2008
 for all criminal trials, civil cases, cases stated and appeals (criminal, civil, family, tribunals and administrative)



	Nov-06	Dec-06	Jan-07	Feb-07	Mar-07	Apr-07	May-07	Jun-07	Jul-07	Aug-07	Sep-07	Oct-07	Nov-07	Dec-07	Jan-08	Feb-08	Mar-08	Apr-08	May-08	Jun-08	Jul-08	Aug-08	Sep-08	Oct-08	Nov-08	Dec-08
◆ Auckland Circuit	2,510.0	2,424.8	2,443.4	2,517.0	2,497.3	2,524.0	2,921.3	2,917.6	2,787.2	2,750.9	2,989.3	3,093.0	3,023.9	2,960.3	3,091.2	3,007.9	3,081.9	3,105.3	3,351.0	3,399.9	3,151.5	3,143.6	3,127.8	3,133.7	2,945.1	2,969.4
▲ Wellington Circuit	886.3	892.8	915.2	849.3	858.3	877.6	932.3	968.9	952.4	1,056.8	1,113.8	1,114.2	970.2	958.2	963.0	870.7	874.8	877.6	874.5	913.3	916.2	903.9	865.9	797.7	775.4	802.1
× Christchurch Circuit	279.7	301.9	315.2	315.4	253.1	256.3	274.2	302.0	347.6	319.6	333.8	352.7	356.3	338.8	379.3	393.9	385.0	408.7	406.1	428.5	426.2	402.4	378.8	368.9	426.2	415.9