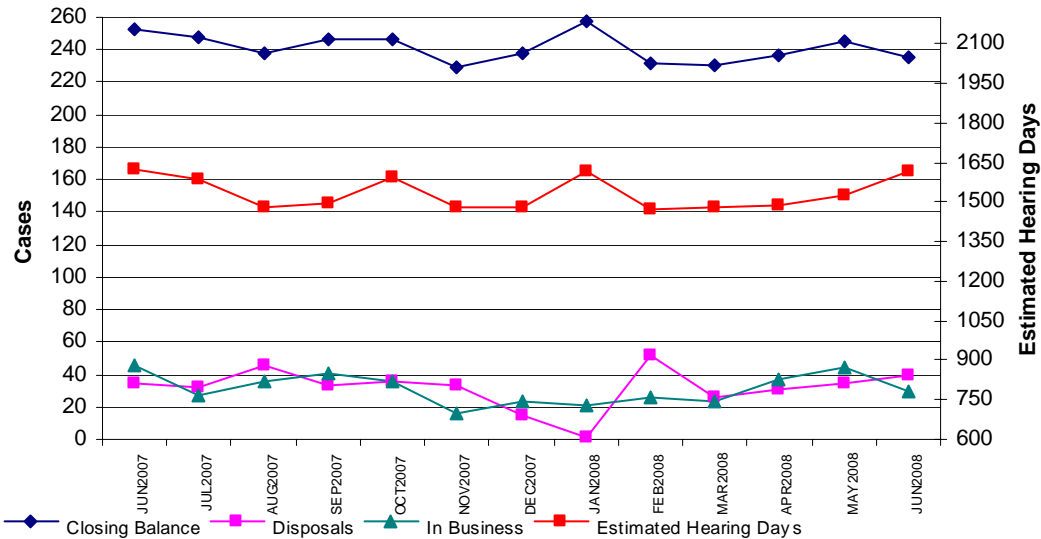


High Court: Jury Trials



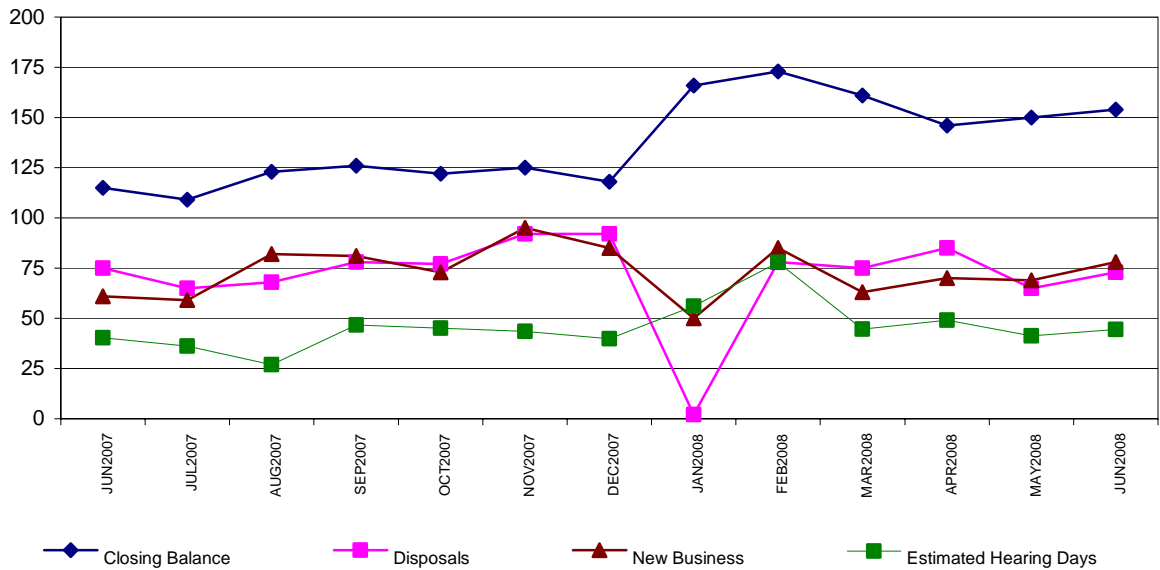
The number of trials on hand as at 30 June 2008 was 235, down 18 from the 253 on hand as at 30 June 2007. The estimated hearing days required to hear these trials is 1618 days compared with 1622 as at 30 June 2007.

The number of jury trials disposed of in June 2008 was 39, compared with 35 in June 2007.

New trials received during June 2008 were 29, a decrease of 37% from 46 in June 2007.

The clearance rate for the month of June 2008 was therefore 1.34.

High Court: Criminal Appeals



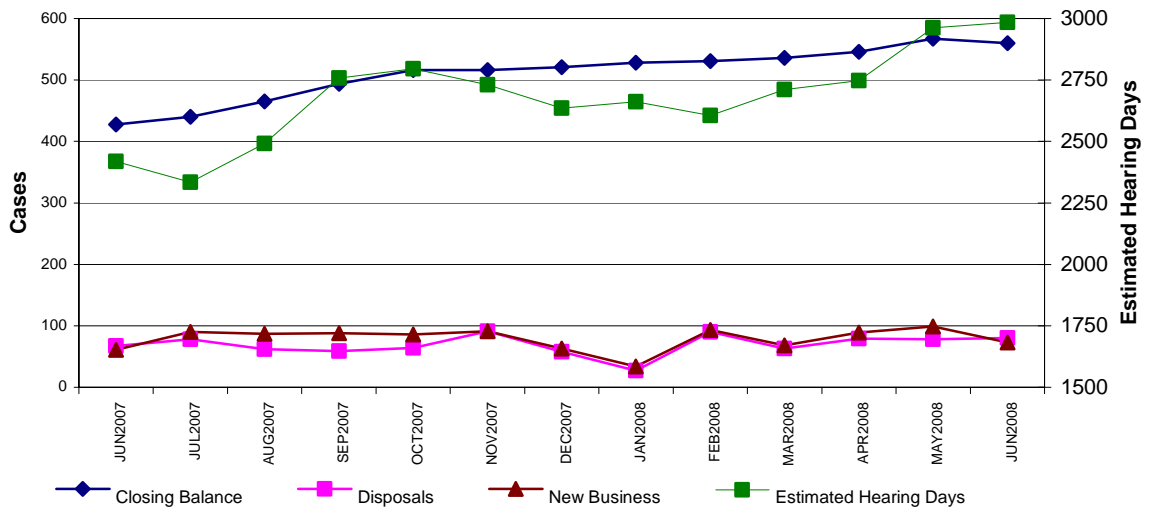
As at 30 June 2008, 154 criminal appeals were on hand, an increase of 34% from 115 at 30 June 2007. The number of estimated hearing days required to dispose of the appeals on hand at the end of June 2008 was 44 days, compared with 40 days at the end of June 2007.

There were 73 disposals in June 2008, down from 75 disposals in June 2007.

There were 78 new criminal appeals received in June 2008, an increase of 28% from 61 new appeals in June 2007.

The clearance rate for the month of June 2008 was therefore 0.93.

High Court: Civil Proceedings



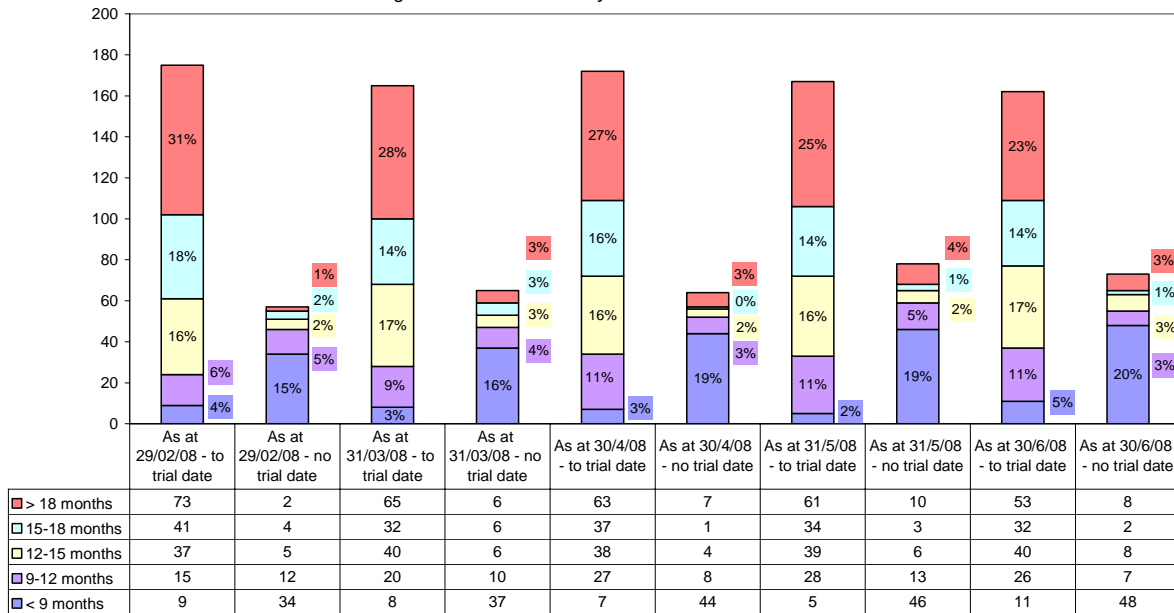
As at 30 June 2008, outstanding civil proceedings numbered 560, an increase of 31%

from the 428 on hand as at the end of June 2007. Correspondingly, estimated hearing days required at the end of June 2008 were 2985, up from 2419 in June 2007.

New business for the month of June 2008 was 73, a decrease of 19% on the 61 in June 2007.

Disposals in June 2008 numbered 80, an increase of 19% on 67 in June 2007.

High Court Criminal Jury Trials
Age of Trials - 29 February 2008 to 30 June 2008



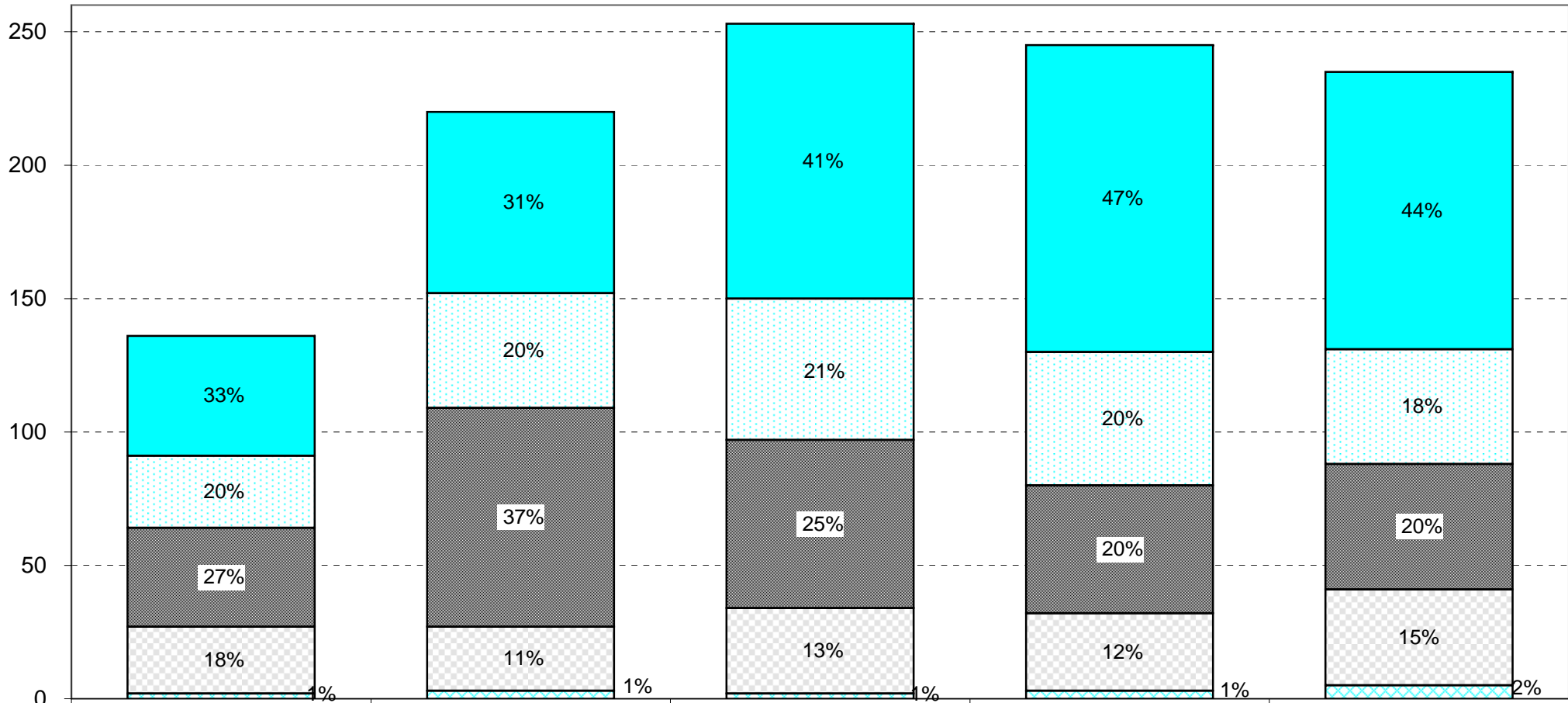
Throughput and Outstanding Workload for High Court Criminal Jury Trials - July 2007 to June 2008																				
Court	Opening Balance	New Business	Retrials Directed	Transfers In	Warrants Executed	Number of Cases Disposed			Warrants Issued	Transfers out	Merged/ Deleted	Hung Juries	Mis-trials	Closing Balance	Age of Outstanding Cases - Months					Estimated Hearing Days
						Heard	Before the day	On the day							< 3	3-6	6-9	9-12	> 12	
Auckland	102	122	14	1	2	62	54	18	1	8	7	5	4	82	0	5	9	11	57	712
Whangarei	14	13	1	1	0	7	3	9	1	0	1	0	0	8	0	0	3	1	4	39
Rotorua	31	43	-	0	2	23	8	4	2	0	0	0	0	39	3	4	10	9	13	246
Gisborne	3	1	-	1	0	1	1	1	0	0	0	0	0	2	0	0	0	0	2	10
New Plymouth	5	4	-	0	0	5	0	1	0	0	0	0	0	3	0	1	1	1	0	11
Hamilton	29	44	3	0	0	12	19	12	0	1	2	3	0	27	1	6	13	4	3	111
Auckland Circuit	184	227	18	3	4	110	85	45	4	9	10	8	4	161	4	16	36	26	79	1,129
Wellington	22	36	-	0	0	17	12	6	0	1	2	0	0	20	0	8	1	2	9	103
Napier	15	15	1	0	0	12	4	4	1	0	0	1	0	9	1	0	0	5	3	26
Palmerston North	5	10	2	1	0	0	4	0	1	0	0	2	0	11	0	3	2	2	4	62
Wanganui	3	3	1	0	0	2	2	0	0	0	0	0	0	3	0	2	0	0	1	13
Nelson	4	3	-	1	0	3	0	0	0	0	2	0	0	3	0	0	1	0	2	27
Blenheim	1	3	-	0	0	2	1	0	0	0	0	0	0	1	0	0	0	1	0	10
Wellington Circuit	50	70	4	2	0	36	23	10	2	1	4	3	0	47	1	13	4	10	19	241
Christchurch	12	25	2	1	0	8	13	2	1	0	1	0	0	15	0	1	4	5	5	141
Timaru	1	3	-	0	0	0	1	0	0	0	0	0	0	3	0	2	0	0	1	37
Dunedin	2	11	-	0	0	0	4	0	0	1	0	0	0	8	0	3	3	2	0	65
Invercargill	4	2	-	0	0	2	2	1	0	0	0	0	0	1	0	1	0	0	0	5
Greymouth	0	-	-	0	0	0	0	0	0	0	0	0	0	0	0	0	0	0	0	0
Christchurch Circuit	19	41	2	1	0	10	20	3	1	1	1	0	0	27	0	7	7	7	6	248
NATIONAL TOTAL	253	338	24	6	4	156	128	58	7	11	15	11	4	235	5	36	47	43	104	1,618

Notes:

- 1) Transfer out refers to the transfer of another trial within the same Jurisdiction and a transfer of a trial to another Jurisdiction.
- 2) In calculating the closing balance for an individual court, the cases transferred out are considered to be disposed.
- 3) Remanded in custody status is collected at the time of committal only.

Court	Throughput and Outstanding Workload for High Court Criminal Jury Trials - June 2008 (Manual)																			
	Opening Balance	New Business	Retrials Directed	Transfers In	Warrants Executed	Number of Cases Disposed			Warrants Issued	Transfer out	Merged/ Deleted	Hung Juries	Mis-trials	Closing Balance	Age of Outstanding Cases - Months					Estimated Hearing Days
						Heard	Before the day	On the day							< 3	3-6	6-9	9-12	> 12	
Auckland	95	7	0	0	0	7	8	4	0	0	1	0	0	82	0	5	9	11	57	712
Whangarei	8	0	0	0	0	0	0	0	0	0	0	0	0	8	0	0	3	1	4	39
Rotorua	39	4	0	0	0	4	0	0	0	0	0	0	0	39	3	4	10	9	13	246
Gisborne	2	0	0	0	0	0	0	0	0	0	0	0	0	2	0	0	0	0	2	10
New Plymouth	3	0	0	0	0	0	0	0	0	0	0	0	0	3	0	1	1	1	0	11
Hamilton	26	5	0	0	0	1	2	1	0	0	0	0	0	27	1	6	13	4	3	111
Auckland Circuit	173	16	0	0	0	12	10	5	0	0	1	0	0	161	4	16	36	26	79	1129
Wellington	19	5	0	0	0	3	0	1	0	0	0	0	0	20	0	8	1	2	9	103
Napier	10	1	0	0	0	2	0	0	0	0	0	0	0	9	1	0	0	5	3	26
Palmerston North	10	1	0	1	0	0	1	0	0	0	0	0	0	11	0	3	2	2	4	62
Wanganui	2	1	0	0	0	0	0	0	0	0	0	0	0	3	0	2	0	0	1	13
Nelson	3	0	0	0	0	0	0	0	0	0	0	0	0	3	0	0	1	0	2	27
Blenheim	1	0	0	0	0	0	0	0	0	0	0	0	0	1	0	0	0	1	0	10
Wellington Circuit	45	8	0	1	0	5	1	1	0	0	0	0	0	47	1	13	4	10	19	241
Christchurch	16	2	0	0	0	1	1	1	0	0	0	0	0	15	0	1	4	5	5	141
Timaru	2	1	0	0	0	0	0	0	0	0	0	0	0	3	0	2	0	0	1	37
Dunedin	9	0	0	0	0	0	1	0	0	0	0	0	0	8	0	3	3	2	0	65
Invercargill	0	1	0	0	0	0	0	0	0	0	0	0	0	1	0	1	0	0	0	5
Greymouth	0	0	0	0	0	0	0	0	0	0	0	0	0	0	0	0	0	0	0	0
Christchurch Circuit	27	4	0	0	0	1	2	1	0	0	0	0	0	27	0	7	7	7	6	248
NATIONAL TOTAL	245	28	0	1	0	18	13	7	0	0	1	0	0	235	5	36	47	43	104	1618

High Court Criminal Jury Trials
Ages of Cases on Hand



	As at 30 June 2005	As at 30 June 2006	As at 30 June 2007	As at 31 May 2008	As at 30 June 2008
■ > 12 months	45	68	103	115	104
■ 9-12 months	27	43	53	50	43
■ 6-9 months	37	82	63	48	47
■ 3-6 months	25	24	32	29	36
■ < 3 months	2	3	2	3	5

Throughput and Outstanding Workload for High Court Civil Cases - July 07 - June 08								
Court	Opening Balance	New Cases	Number of Cases Actioned			Closing Balance	Estimated Hearing Days	
			Heard	Before the day	On the day		June 2008	June 2008
Auckland	229	494	175	185	4	359	1,487	1,910
Whangarei	9	12	8	1	-	12	23	73
Rotorua	13	44	13	19	4	21	68	86
Gisborne	2	3	2	1	1	1	5	2
New Plymouth	1	13	5	5	-	4	7	11
Hamilton	13	50	12	29	-	21	22	103
Auckland Circuit	267	616	215	240	9	418	1,610	2,184
Wellington	89	196	128	73	-	84	545	562
Napier	7	14	5	5	5	6	23	35
Palmerston North	6	8	5	3	3	3	8	16
Wanganui	2	4	5	1	-	0	14	-
Nelson	7	12	7	7	-	5	24	19
Blenheim	9	1	3	6	-	1	30	5
Wellington Circuit	120	235	153	95	8	99	643	637
Christchurch	32	82	51	29	4	30	142	116
Timaru	1	1	-	-	-	2	3	5
Dunedin	4	19	5	10	2	6	10	26
Invercargill	4	8	3	3	1	5	11	18
Greymouth	0	1	1	-	-	0	-	-
Christchurch Circuit	41	111	60	42	7	43	166	165
NATIONAL TOTAL	428	962	428	377	24	560	2,419	2,985

Throughput and Outstanding Workload for High Court Civil Cases - June 2008								
Court	Opening Balance	New Cases	Number of Cases Actioned			Closing Balance	Estimated Hearing Days	
			Heard	Before the day	On the day		Last Month	This Month
Auckland	361	42	18	26	-	359	1,908	1,910
Whangarei	11	2	1	-	-	12	75	73
Rotorua	21	2	2	-	-	21	94	86
Gisborne	1	1	-	1	-	1	1	2
New Plymouth	5	-	-	1	-	4	11	11
Hamilton	21	2	-	2	-	21	113	103
Auckland Circuit	420	49	21	30	-	418	2,202	2,184
Wellington	84	15	12	3	-	84	535	562
Napier	9	-	2	1	-	6	41	35
Palmerston North	3	-	-	-	-	3	16	16
Wanganui	0	-	-	-	-	0	-	-
Nelson	6	1	1	1	-	5	18	19
Blenheim	1	-	-	-	-	1	5	5
Wellington Circuit	103	16	15	5	-	99	615	637
Christchurch	30	6	3	3	-	30	103	116
Timaru	2	-	-	-	-	2	5	5
Dunedin	7	1	-	2	-	6	22	26
Invercargill	5	1	1	-	-	5	18	18
Greymouth	0	-	-	-	-	0	-	-
Christchurch Circuit	44	8	4	5	-	43	148	165
NATIONAL TOTAL	567	73	40	40	-	560	2,964	560

Throughput and Outstanding Workload for High Court Criminal Appeal Cases - July 2007 to June 2008									
Court	Opening Balance	New Cases	Number of Cases Actioned			Closing Balance	Estimated Hearing Days		
			Heard	Before the day	On the day		June 2008	June 2008	
Auckland	28	140	123	20	5	20	17.0	6.0	
Whangarei	9	40	34	3	1	11	2.2	2.2	
Rotorua	9	101	91	7	-	12	3.5	4.5	
Gisborne	2	16	10	4	-	4	1.0	1.3	
New Plymouth	1	25	16	3	4	3	0.2	0.6	
Hamilton	6	64	52	13	1	4	0.8	2.2	
Auckland Circuit	55	386	326	50	11	54	24.70	16.80	
Wellington	19	92	83	-	-	28	4.0	8.5	
Napier	4	17	14	1	1	5	1.5	1.5	
Palmerston North	6	43	35	5	2	7	1.1	1.6	
Wanganui	2	25	22	1	-	4	0.5	1.0	
Nelson	1	26	22	1	-	3	0.5	0.9	
Blenheim	1	9	4	2	2	2	0.8	0.4	
Wellington Circuit	33	212	180	10	5	49	8.4	13.9	
Christchurch	10	179	150	14	0	25	2.9	7.5	
Timaru	6	15	12	2	0	7	1.2	1.2	
Dunedin	5	50	38	7	2	8	0.9	1.0	
Invercargill	5	35	28	5	0	6	1.2	2.0	
Greymouth	1	13	4	5	0	5	1.0	2.0	
Christchurch Circuit	27	292	232	33	2	51	7.2	13.7	
NATIONAL TOTAL	115	890	738	93	18	154	40.3	44.4	

Throughput and Outstanding Workload for High Court Criminal Appeals - June 2008									
Court	Opening Balance	New Cases	Number of Cases Actioned			Closing Balance	Estimated Hearing Days		
			Heard	Before the day	On the day		Last Month	This Month	
Auckland	27	9	14	2	-	20	7.0	6.0	
Whangarei	6	6	1	-	-	11	1.4	2.2	
Rotorua	15	6	8	1	-	12	4.0	4.5	
Gisborne	2	2	-	-	-	4	0.5	1.3	
New Plymouth	1	2	-	-	-	3	0.2	0.6	
Hamilton	6	5	6	1	-	4	1.3	2.2	
Auckland Circuit	57	30	29	4	-	54	14.4	16.8	
Wellington	17	15	4	-	-	28	5.5	8.5	
Napier	7	2	4	-	-	5	3.0	1.5	
Palmerston North	10	3	4	1	1	7	2.2	1.6	
Wanganui	4	-	-	-	-	4	1.0	1.0	
Nelson	1	3	1	-	-	3	0.2	0.9	
Blenheim	1	1	-	-	-	2	0.2	0.4	
Wellington Circuit	40	24	13	1	1	49	12.1	13.9	
Christchurch	29	15	15	4	-	25	8.5	7.5	
Timaru	3	4	-	-	-	7	0.7	1.2	
Dunedin	9	2	3	-	-	8	3.0	1.0	
Invercargill	5	3	2	-	-	6	3.5	2.0	
Greymouth	6	-	1	-	-	5	2.5	2.0	
Christchurch Circuit	52	24	21	4	-	51	18.2	13.7	
NATIONAL TOTAL	149	78	63	9	1	154	44.7	44.4	

Throughput and Outstanding Workload for High Court Civil & Family Appeals - July 2007 to June 2008									
Court	Opening Balance	New Cases	Number of Cases Actioned			Closing Balance	Estimated Hearing Days		
			Heard	Before the day	On the day		June 2008	June 2008	
Auckland	36	102	74	13	1	50	38.0	55.0	
Whangarei	6	12	11	3	-	2	3.0	1.0	
Rotorua	7	12	10	2	3	4	4.0	3.0	
Gisborne	0	-	-	-	-	0	-	-	
New Plymouth	2	6	7	1	-	0	0.2	-	
Hamilton	8	23	17	9	-	5	10.5	10.5	
Auckland Circuit	59	155	119	28	4	61	55.7	69.5	
Wellington	39	69	53	24	-	30	33.4	27.9	
Napier	2	14	12	2	-	2	1.5	2.0	
Palmerston North	5	8	8	5	-	0	2.7	-	
Wanganui	1	2	1	2	-	0	1.0	-	
Nelson	2	3	5	-	-	0	1.0	-	
Blenheim	0	1	1	-	-	0	-	-	
Wellington Circuit	49	97	80	33	-	32	39.6	29.9	
Christchurch	8	18	17	4	-	5	8.2	4.6	
Timaru	0	1	1	-	-	0	-	-	
Dunedin	0	4	2	-	-	2	-	1.2	
Invercargill	1	6	4	1	1	1	0.6	0.6	
Greymouth	0	-	-	-	-	0	-	-	
Christchurch Circuit	9	29	24	5	1	8	8.8	6.4	
NATIONAL TOTAL	117	281	223	66	5	101	104.1	105.8	

Throughput and Outstanding Workload for High Court Civil & Family Appeals - June 2008								
Court	Opening Balance	New Cases	Number of Cases Actioned			Closing Balance	Estimated Hearing Days	
			Heard	Before the day	On the day		Last Month	This Month
Auckland	35	20	3	2	-	50	41	55
Whangarei	3	2	2	1	-	2	3.0	1.0
Rotorua	4	-	-	-	-	4	3.0	3
Gisborne	0	-	-	-	-	0	-	-
New Plymouth	1	-	1	-	-	0	1.00	-
Hamilton	8	1	3	1	-	5	12.0	10.5
Auckland Circuit	51	23	9	4	-	61	60.0	69.5
Wellington	28	8	6	-	-	30	24.4	27.9
Napier	3	-	1	-	-	2	2.5	2.0
Palmerston North	1	-	-	1	-	0	0.5	-
Wanganui	0	-	-	-	-	0	-	-
Nelson	0	-	-	-	-	0	-	-
Blenheim	0	-	-	-	-	0	-	-
Wellington Circuit	32	8	7	1	-	32	27.4	29.9
Christchurch	7	3	4	1	-	5	6.2	4.6
Timaru	0	-	-	-	-	0	-	-
Dunedin	3	-	1	-	-	2	1.8	1.2
Invercargill	1	1	1	-	-	1	1.0	0.6
Greymouth	0	-	-	-	-	0	-	-
Christchurch Circuit	11	4	6	1	-	8	9.0	6.4
NATIONAL TOTAL	94	35	22	6	-	101	96.4	105.8

High Court Business On Hand Summary

Comparative Quarterly Figures for the Year Ending 31 December 2007

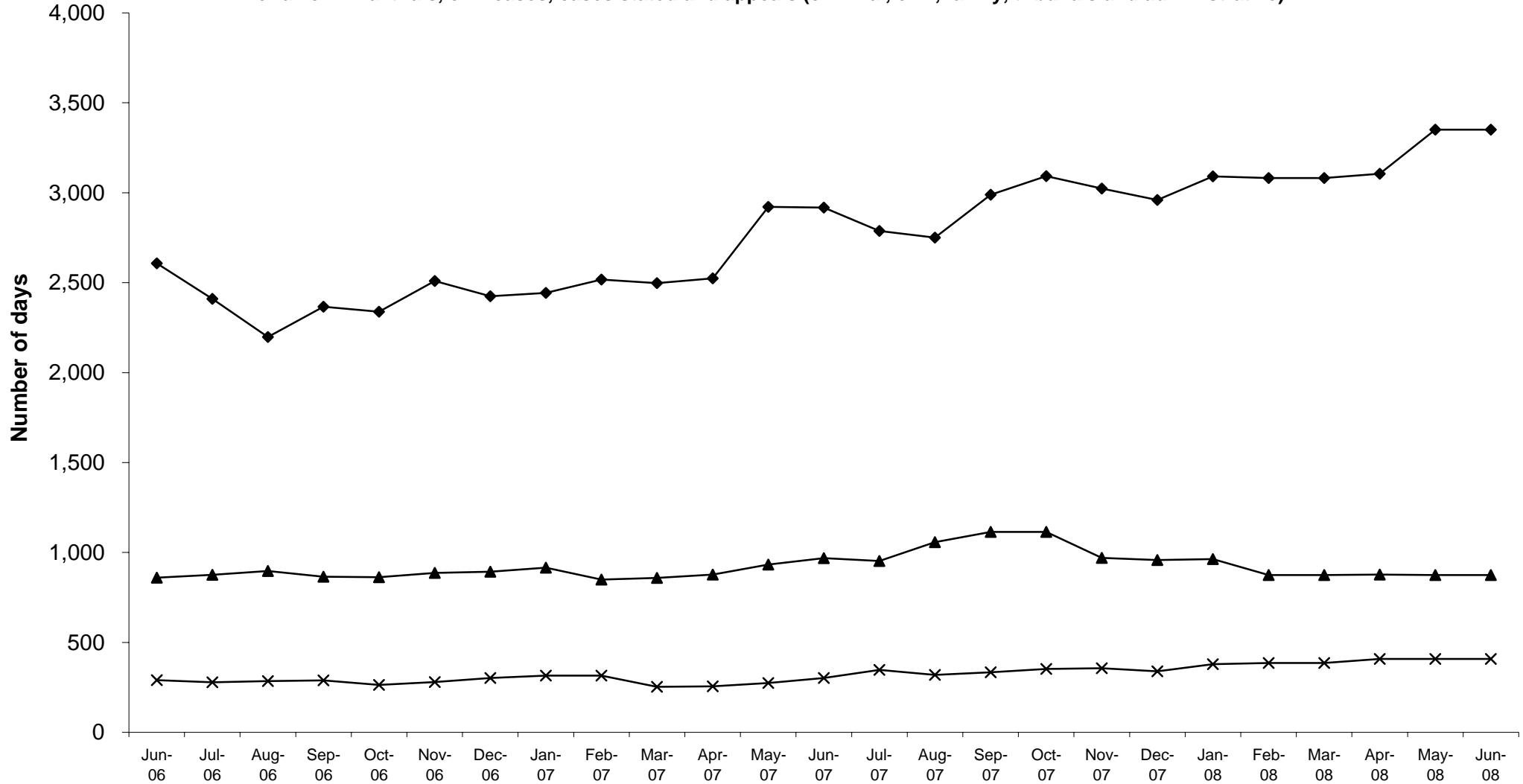
Comparative Monthly Figures for the Four Months to 30 June 2008

ESTIMATED SITTING DAYS								
Work on hand in estimated sitting days for all criminal trials, civil cases, cases stated and appeals (criminal, civil, family, tribunals and administrative)								
High Court	Quarterly				Months			
	Mar-07	Jun-07	Sep-07	Dec-07	Mar-08	Apr-08	May-08	Jun-08
Auckland	1,850.7	2,316.7	2,463.1	2,393.0	2,393.5	2,390.0	2,640.1	2,640.1
Whangarei	98.4	85.7	62.8	79.3	108.6	110.6	119.4	119.4
Gisborne	34.5	26.0	28.0	22.0	18.0	18.0	11.5	11.5
Rotorua	242.0	238.0	209.5	250.3	294.0	313.5	326.5	326.5
New Plymouth	40.4	50.4	33.1	34.3	27.8	20.5	23.2	23.2
Hamilton	231.3	200.8	192.8	181.4	240.0	252.7	230.3	230.3
Auckland Circuit	2,497.3	2,917.6	2,989.3	2,960.3	3,081.9	3,105.3	3,351.0	3,351.0
Wellington	682.0	704.1	817.1	680.9	636.8	625.0	656.0	656.0
Palmerston North	31.7	32.7	44.6	47.6	55.8	59.7	70.1	70.1
Napier	62.0	98.5	111.5	117.5	108.0	118.5	77.0	77.0
Wanganui	42.0	47.5	24.5	10.5	6.5	10.5	11.0	11.0
Nelson	8.6	53.3	82.3	77.7	38.5	40.9	45.2	45.2
Blenheim	32.0	32.8	33.8	24.0	29.2	23.0	15.2	15.2
Wellington Circuit	858.3	968.9	1,113.8	958.2	874.8	877.6	874.5	874.5
Christchurch	195.0	218.1	222.6	230.5	248.1	251.0	276.5	276.5
Greymouth	10.0	1.0	1.6	0.2	2.5	2.5	2.5	2.5
Dunedin	19.7	45.7	96.9	92.4	106.5	122.2	94.8	94.8
Timaru	10.0	9.2	3.5	4.1	11.5	13.0	12.7	12.7
Invercargill	18.4	28.0	9.2	11.6	16.4	20.0	22.1	22.1
Christchurch Circuit	253.1	302.0	333.8	338.8	385.0	408.7	408.6	408.6
NATIONAL TOTAL	3,608.7	4,188.5	4,436.9	4,257.3	4,341.7	4,391.6	4,634.1	4,634.1

High Court Business on Hand Summary

Estimated Sitting Days

for all criminal trials, civil cases, cases stated and appeals (criminal, civil, family, tribunals and administrative)



	Jun-06	Jul-06	Aug-06	Sep-06	Oct-06	Nov-06	Dec-06	Jan-07	Feb-07	Mar-07	Apr-07	May-07	Jun-07	Jul-07	Aug-07	Sep-07	Oct-07	Nov-07	Dec-07	Jan-08	Feb-08	Mar-08	Apr-08	May-08	Jun-08
◆ Auckland Circuit	2,607.5	2,409.8	2,197.6	2,366.3	2,339.0	2,510.0	2,424.8	2,443.4	2,517.0	2,497.3	2,524.0	2,921.3	2,917.6	2,787.2	2,750.9	2,989.3	3,093.0	3,023.9	2,960.3	3,091.2	3,081.9	3,081.9	3,105.3	3,351.0	3,351.0
▲ Wellington Circuit	859.3	875.7	897.6	865.1	862.4	886.3	892.8	915.2	849.3	858.3	877.6	932.3	968.9	952.4	1,056.8	1,113.8	1,114.2	970.2	958.2	963.0	874.8	874.8	877.6	874.5	874.5
✕ Christchurch Circuit	290.6	277.8	284.4	289.0	264.3	279.7	301.9	315.2	315.4	253.1	256.3	274.2	302.0	347.6	319.6	333.8	352.7	356.3	338.8	379.3	385.0	385.0	408.7	408.6	408.6