

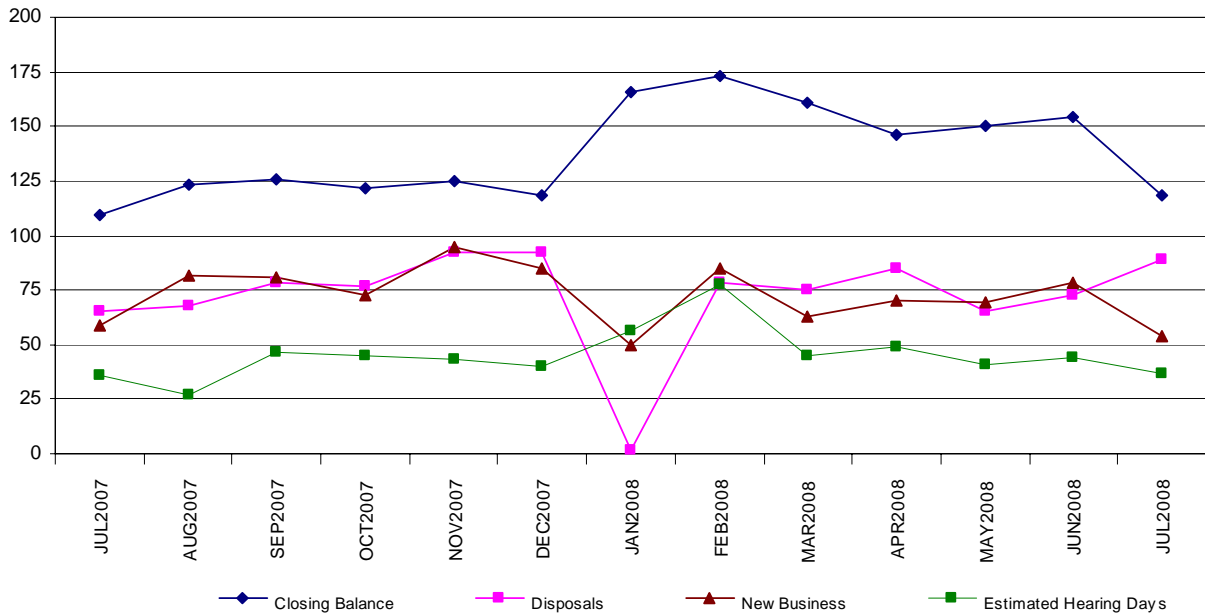
The number of trials on hand as at 31 July 2008 was 228, down 20 from the 248 on hand as at 31 July 2007. The estimated hearing days required to hear these trials is 1609 days compared with 1583 as at 31 July 2007.

The number of jury trials disposed of in July 2008 was 35, compared with 32 in July 2007.

New trials received during July 2008 were 28, down from 27 in July 2007.

[Clearance rate for July 2008 = 1.25]

High Court: Criminal Appeals



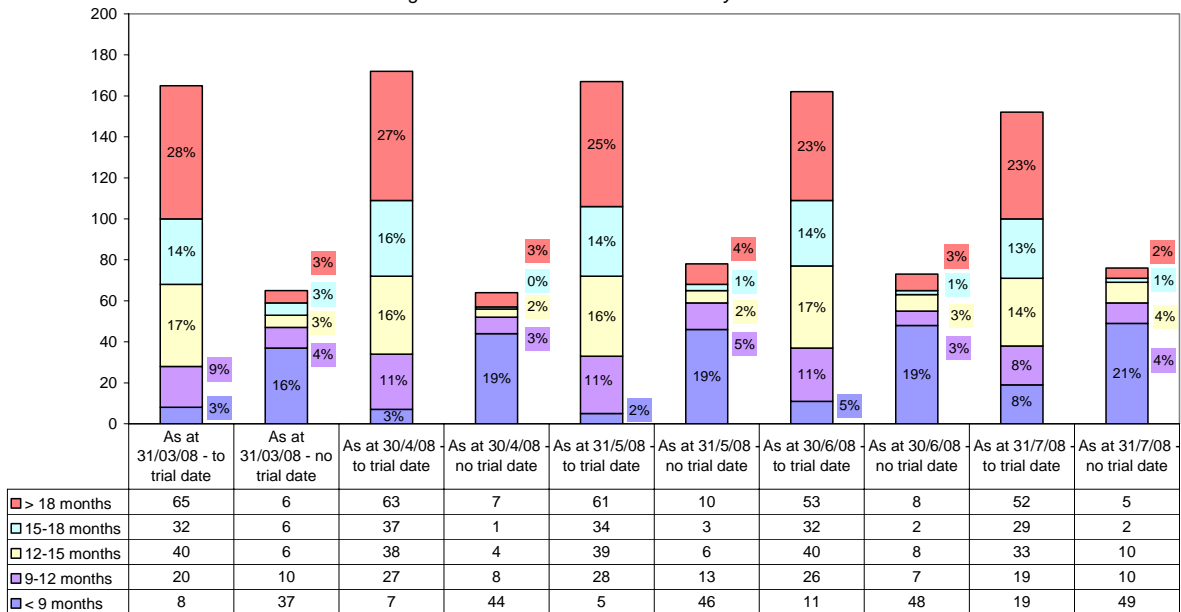
As at 31 July 2008, 118 criminal appeals were on hand, an increase of 8% from 109 at 31 July 2007. The number of estimated hearing days required to dispose of the appeals on hand at the end of July 2008 was 37 days, compared with 36 days at the end of July 2007.

There were 89 disposals in July 2008, down from 65 disposals in July 2007.

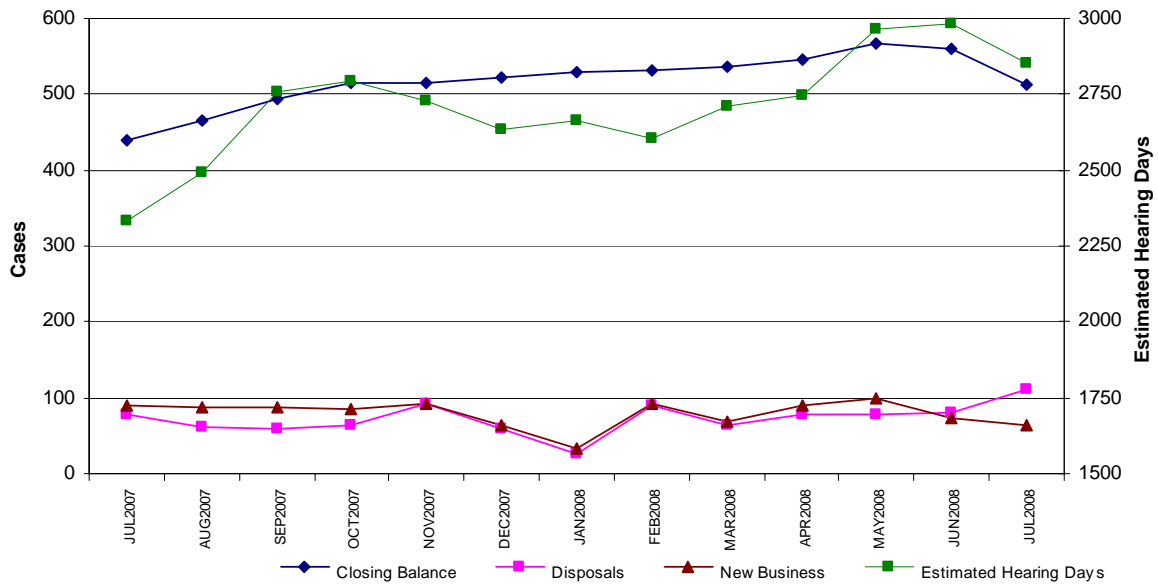
There were 54 new criminal appeals received in July 2008, a decrease of 9% from 59 new appeals in July 2007.

[Clearance rate for July 2008 = 1.64]

High Court Criminal Jury Trials
Age of Trials - 31 March 2008 to 31 July 2008



High Court: Civil Proceedings



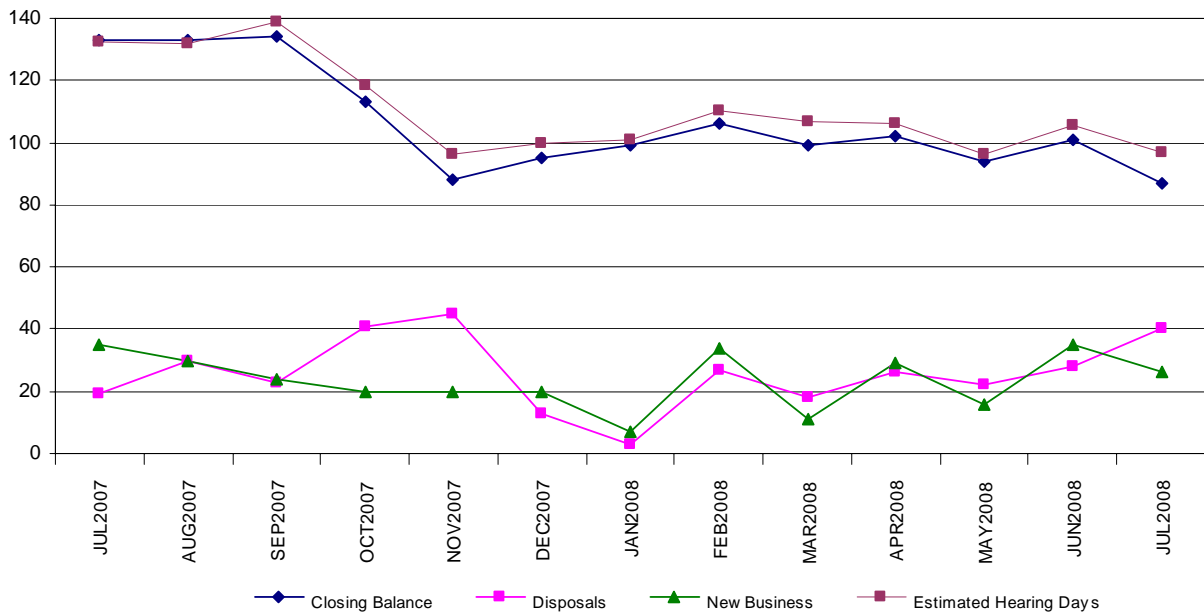
As at 31 July 2008, outstanding civil proceedings numbered 512, an increase of 16% from the 440 on hand as at the end of July 2007. Correspondingly, estimated hearing days required at the end of July 2008 were 2850, up from 2334 in July 2007.

New business for the month of July 2008 was 64, a decrease of 41% on the 90 in July 2007.

Disposals in July 2008 numbered 112, an increase of 43% on 78 in July 2007.

[Clearance rate for July 2008 = 1.75]

High Court: Civil Appeals



As at 31 July 2008, 85 civil appeals were on hand, a decrease of 46 from 131 as at 31 July 2007. The number of estimated hearing days required to dispose of the appeals on hand at the end of July 2008 was 93 days, compared with 133 days at the end of July

2007.

There were 40 disposals in July 2008, up from 19 disposals in July 2007.

There were 26 new civil appeals received in July 2008, a decrease of 35% from 35 new appeals in July 2007.

[Clearance rate for July 2008 = 1.53]

Throughput and Outstanding Workload for High Court Criminal Jury Trials - August 2007 to July 2008

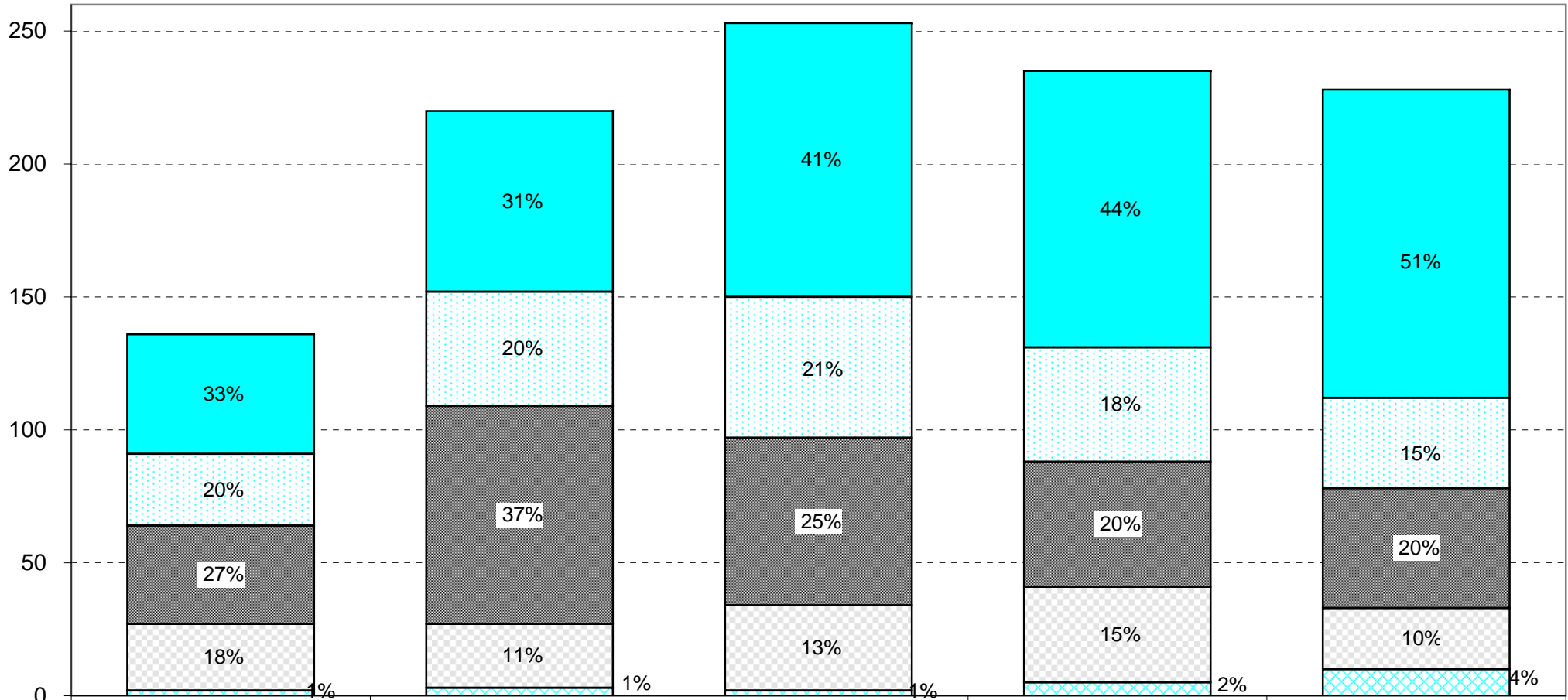
Court	Opening Balance	New Business	Retrials Directed	Transfers In	Warrants Executed	Number of Cases Disposed			Warrants Issued	Transfers out	Merged/ Deleted	Hung Juries	Mis-trials	Closing Balance	Age of Outstanding Cases - Months					Estimated Hearing Days
						Heard	Before the day	On the day							< 3	3-6	6-9	9-12	> 12	
Auckland	103	124	12	1	2	65	53	18	1	8	4	5	4	84	4	4	8	12	56	740
Whangarei	11	15	1	1	0	7	4	8	2	0	1	0	0	6	0	1	1	2	2	35
Rotorua	31	44	-	0	2	22	9	5	2	0	0	0	0	39	2	5	8	8	16	236
Gisborne	4	1	-	0	0	1	1	1	0	0	0	0	0	2	0	0	0	0	2	15
New Plymouth	5	5	-	0	0	6	1	1	0	0	0	0	0	2	1	1	0	0	0	8
Hamilton	29	43	2	0	0	11	18	13	0	1	2	2	0	27	1	6	14	3	3	111
Auckland Circuit	183	232	15	2	4	112	86	46	5	9	7	7	4	160	8	17	31	25	79	1,145
Wellington	22	36	-	0	0	17	12	6	0	1	1	0	0	21	0	0	0	0	21	106
Napier	12	15	1	0	0	12	5	3	1	0	1	1	0	5	1	0	0	2	2	14
Palmerston North	5	9	2	1	0	3	3	0	1	0	0	2	0	8	0	1	3	1	3	48
Wanganui	3	3	1	0	0	2	2	0	0	0	0	0	0	3	0	0	2	0	1	18
Nelson	5	4	-	1	0	3	0	0	0	0	2	0	0	5	0	2	0	1	2	35
Blenheim	0	3	-	0	0	1	1	0	0	0	0	0	0	1	0	0	0	1	0	10
Wellington Circuit	47	65	4	2	0	32	21	9	2	1	3	3	0	43	1	3	5	5	29	231
Christchurch	10	25	2	1	0	7	15	2	1	0	1	0	0	12	1	1	2	3	5	123
Timaru	1	4	-	0	0	0	1	1	0	0	0	0	0	3	0	1	1	1	0	37
Dunedin	4	9	-	0	0	0	4	0	0	1	0	0	0	8	0	0	6	0	2	65
Invercargill	3	3	-	0	0	2	1	1	0	0	0	0	0	2	0	1	0	0	1	8
Greymouth	0	-	-	0	0	0	0	0	0	0	0	0	0	0	0	0	0	0	0	0
Christchurch Circuit	18	38	2	1	0	9	17	3	1	1	1	0	0	25	1	3	9	4	8	233
NATIONAL TOTAL	248	343	21	5	4	159	130	59	8	11	12	10	4	228	10	23	45	34	116	1,609

Notes:

- 1) Transfer out refers to the transfer of another trial within the same Jurisdiction and a transfer of a trial to another Jurisdiction.
- 2) In calculating the closing balance for an individual court, the cases transferred out are considered to be disposed.
- 3) Remanded in custody status is collected at the time of committal only.

Court	Throughput and Outstanding Workload for High Court Criminal Jury Trials - July 2008														(Manual)					
	Opening Balance	New Business	Retrials Directed	Transfers In	Warrants Executed	Number of Cases Disposed			Warrants Issued	Transfer out	Merged/ Deleted	Hung Juries	Mis-trials	Closing Balance	Age of Outstanding Cases - Months					Estimated Hearing Days
						Heard	Before the day	On the day							< 3	3-6	6-9	9-12	> 12	
Auckland	82	14	0	0	0	8	4	0	0	0	0	0	0	84	4	4	8	12	56	740
Whangarei	8	2	0	0	0	1	1	1	1	0	0	0	0	6	0	1	1	2	2	35
Rotorua	39	2	0	0	0	0	1	1	0	0	0	0	0	39	2	5	8	8	16	236
Gisborne	2	0	0	0	0	0	0	0	0	0	0	0	0	2	0	0	0	0	2	15
New Plymouth	3	1	0	0	0	1	1	0	0	0	0	0	0	2	1	1	0	0	0	8
Hamilton	27	2	0	0	0	0	0	1	0	1	0	0	0	27	1	6	14	3	3	111
Auckland Circuit	161	21	0	0	0	10	7	3	1	1	0	0	0	160	8	17	31	25	79	1145
Wellington	20	3	0	0	0	1	1	0	0	0	0	0	0	21	0	0	0	0	21	106
Napier	9	0	0	0	0	2	1	0	0	0	1	0	0	5	1	0	0	2	2	14
Palmerston North	11	0	0	0	0	3	0	0	0	0	0	0	0	8	0	1	3	1	3	48
Wanganui	3	0	0	0	0	0	0	0	0	0	0	0	0	3	0	0	2	0	1	18
Nelson	3	2	0	0	0	0	0	0	0	0	0	0	0	5	0	2	0	1	2	35
Blenheim	1	0	0	0	0	0	0	0	0	0	0	0	0	1	0	0	0	1	0	10
Wellington Circuit	47	5	0	0	0	6	2	0	0	0	1	0	0	43	1	3	5	5	29	231
Christchurch	15	1	0	0	0	0	4	0	0	0	0	0	0	12	1	1	2	3	5	123
Timaru	3	1	0	0	0	0	0	1	0	0	0	0	0	3	0	1	1	1	0	37
Dunedin	8	0	0	0	0	0	0	0	0	0	0	0	0	8	0	0	6	0	2	65
Invercargill	1	1	0	0	0	0	0	0	0	0	0	0	0	2	0	1	0	0	1	8
Greymouth	0	0	0	0	0	0	0	0	0	0	0	0	0	0	0	0	0	0	0	0
Christchurch Circuit	27	3	0	0	0	0	4	1	0	0	0	0	0	25	1	3	9	4	8	233
NATIONAL TOTAL	235	29	0	0	0	16	13	4	1	1	1	0	0	228	10	23	45	34	116	1609

High Court Criminal Jury Trials
Ages of Cases on Hand



	As at 30 June 2005	As at 30 June 2006	As at 30 June 2007	As at 30 June 2008	As at 31 July 2008
■ > 12 months	45	68	103	104	116
■ 9-12 months	27	43	53	43	34
■ 6-9 months	37	82	63	47	45
■ 3-6 months	25	24	32	36	23
■ < 3 months	2	3	2	5	10

Throughput and Outstanding Workload for High Court Civil Cases - August 07 - July 08

Court	Opening Balance	New Cases	Number of Cases Actioned			Closing Balance	Estimated Hearing Days	
			Heard	Before the day	On the day		July 2008	July 2008
Auckland	234	467	188	200	4	309	1,412	1,783
Whangarei	9	14	8	2	2	11	19	66
Rotorua	12	42	17	19	3	15	66	74
Gisborne	1	3	1	1	1	1	4	2
New Plymouth	4	10	5	5	2	2	17	9
Hamilton	13	53	13	29	-	23	16	101
Auckland Circuit	273	589	232	256	12	361	1,533	2,035
Wellington	88	197	127	76	-	82	524	561
Napier	6	14	6	4	4	6	18	34
Palmerston North	7	7	5	3	3	3	8	16
Wanganui	3	5	5	1	-	2	15	1
Nelson	8	11	6	7	-	6	29	21
Blenheim	9	1	3	6	-	1	30	5
Wellington Circuit	121	235	152	97	7	100	623	638
Christchurch	35	85	52	27	3	38	147	130
Timaru	1	1	-	-	-	2	3	5
Dunedin	7	17	6	10	2	6	22	25
Invercargill	3	8	2	3	1	5	6	18
Greymouth	0	1	1	-	-	0	-	-
Christchurch Circuit	46	112	61	40	6	51	178	178
NATIONAL TOTAL	440	936	445	393	25	512	2,334	2,851

Throughput and Outstanding Workload for High Court Civil Cases - July 2008								
Court	Opening Balance	New Cases	Number of Cases Actioned			Closing Balance	Estimated Hearing Days	
			Heard	Before the day	On the day		Last Month	This Month
Auckland	359	23	32	41	-	309	1,783	1,783
Whangarei	12	4	1	2	2	11	66	66
Rotorua	21	-	4	2	-	15	74	74
Gisborne	1	-	-	-	-	1	2	2
New Plymouth	4	-	-	-	2	2	9	9
Hamilton	21	5	1	2	-	23	101	101
Auckland Circuit	418	32	38	47	4	361	2,035	2,035
Wellington	84	16	10	8	-	82	561	561
Napier	6	1	1	-	-	6	34	34
Palmerston North	3	-	-	-	-	3	16	16
Wanganui	0	2	-	-	-	2	1	1
Nelson	5	1	-	-	-	6	21	21
Blenheim	1	-	-	-	-	1	5	5
Wellington Circuit	99	20	11	8	-	100	638	638
Christchurch	30	11	2	1	-	38	130	130
Timaru	2	-	-	-	-	2	5	5
Dunedin	6	1	1	-	-	6	25	25
Invercargill	5	-	-	-	-	5	18	18
Greymouth	0	-	-	-	-	0	-	-
Christchurch Circuit	43	12	3	1	-	51	178	178
NATIONAL TOTAL	560	64	52	56	4	512	2,851	512

Throughput and Outstanding Workload for High Court Criminal Appeal Cases - August 2007 to July 2008									
Court	Opening Balance	New Cases	Number of Cases Actioned			Closing Balance	Estimated Hearing Days		
			Heard	Before the day	On the day		July 2008	July 2008	
Auckland	24	135	115	17	11	16	6.5	3.0	
Whangarei	10	39	40	4	2	3	3.2	0.6	
Rotorua	12	103	92	9	-	14	4.5	7.0	
Gisborne	2	16	10	4	-	4	1.0	1.3	
New Plymouth	3	24	16	3	7	1	1.0	0.3	
Hamilton	6	60	52	10	1	3	1.2	0.7	
Auckland Circuit	57	377	325	47	21	41	17.40	12.90	
Wellington	17	94	88	-	-	23	4.0	8.5	
Napier	1	17	14	-	1	3	0.5	1.0	
Palmerston North	4	40	31	4	2	7	0.8	1.4	
Wanganui	3	24	22	1	-	4	1.0	1.0	
Nelson	2	27	23	1	-	4	0.9	1.3	
Blenheim	1	10	5	2	2	2	0.2	0.4	
Wellington Circuit	28	212	183	8	5	43	7.4	13.6	
Christchurch	10	186	167	14	0	15	2.7	5.7	
Timaru	2	17	14	0	0	5	0.4	1.3	
Dunedin	7	48	39	7	1	8	6.0	1.0	
Invercargill	4	33	25	5	0	6	1.2	1.2	
Greymouth	1	12	5	7	0	1	1.0	1.0	
Christchurch Circuit	24	296	250	33	1	35	11.3	10.2	
NATIONAL TOTAL	109	885	758	88	27	119	36.1	36.7	

Throughput and Outstanding Workload for High Court Criminal Appeals - July 2008									
Court	Opening Balance	New Cases	Number of Cases Actioned			Closing Balance	Estimated Hearing Days		
			Heard	Before the day	On the day		Last Month	This Month	
Auckland	20	6	-	4	6	16	3.0	3.0	
Whangarei	11	2	8	1	1	3	0.6	0.6	
Rotorua	12	11	7	2	-	14	7.0	7.0	
Gisborne	4	-	-	-	-	4	1.3	1.3	
New Plymouth	3	1	-	-	3	1	0.3	0.3	
Hamilton	4	2	2	1	-	3	0.7	0.7	
Auckland Circuit	54	22	17	8	10	41	12.9	12.9	
Wellington	28	5	10	-	-	23	8.5	8.5	
Napier	5	-	2	-	-	3	1.0	1.0	
Palmerston North	7	-	-	-	-	7	1.4	1.4	
Wanganui	4	-	-	-	-	4	1.0	1.0	
Nelson	3	2	1	-	-	4	1.3	1.3	
Blenheim	2	1	1	-	-	2	0.4	0.4	
Wellington Circuit	49	8	14	-	-	43	13.6	13.6	
Christchurch	25	16	25	1	-	15	5.7	5.7	
Timaru	7	2	4	-	-	5	1.3	1.3	
Dunedin	8	4	3	1	-	8	1.0	1.0	
Invercargill	6	2	2	-	-	6	1.2	1.2	
Greymouth	5	-	2	2	-	1	1.0	1.0	
Christchurch Circuit	51	24	36	4	-	35	10.2	10.2	
NATIONAL TOTAL	154	54	67	12	10	119	36.7	36.7	

Throughput and Outstanding Workload for High Court Civil & Family Appeals - August 2007 to July 2008									
Court	Opening Balance	New Cases	Number of Cases Actioned			Closing Balance	Estimated Hearing Days		
			Heard	Before the day	On the day		July 2008	July 2008	
Auckland	43	97	89	19	1	31	46.0	41.5	
Whangarei	5	10	8	3	-	2	4.0	1.0	
Rotorua	6	14	11	2	2	5	2.0	6.0	
Gisborne	0	-	-	-	-	0	-	-	
New Plymouth	3	6	7	1	-	1	2.0	1.5	
Hamilton	9	23	18	8	-	6	11.5	8.0	
Auckland Circuit	66	150	133	33	3	45	65.5	58.0	
Wellington	44	69	58	22	-	32	46.9	29.4	
Napier	5	11	13	2	-	1	5.0	1.0	
Palmerston North	6	7	7	5	-	1	3.8	1.0	
Wanganui	2	2	1	2	-	1	2.0	2.0	
Nelson	1	3	4	-	-	0	0.5	-	
Blenheim	0	1	1	-	-	0	-	-	
Wellington Circuit	58	93	84	31	-	35	58.2	33.4	
Christchurch	7	19	17	4	-	5	7.6	4.2	
Timaru	0	1	1	-	-	0	-	-	
Dunedin	0	4	3	-	-	1	-	0.6	
Invercargill	2	5	4	1	1	1	1.2	0.6	
Greymouth	0	-	-	-	-	0	-	-	
Christchurch Circuit	9	29	25	5	1	7	8.8	5.4	
NATIONAL TOTAL	133	272	242	69	4	87	132.5	96.8	

Throughput and Outstanding Workload for High Court Civil & Family Appeals - July 2008								
Court	Opening Balance	New Cases	Number of Cases Actioned			Closing Balance	Estimated Hearing Days	
			Heard	Before the day	On the day		Last Month	This Month
Auckland	50	5	17	7	-	31	42	42
Whangarei	2	-	-	-	-	2	1.0	1.0
Rotorua	4	2	1	-	-	5	6.0	6
Gisborne	0	-	-	-	-	0	-	-
New Plymouth	0	1	-	-	-	1	1.50	1.5
Hamilton	5	2	1	-	-	6	8.0	8.0
Auckland Circuit	61	10	19	7	-	45	58.0	58.0
Wellington	30	12	8	2	-	32	29.4	29.4
Napier	2	-	1	-	-	1	1.0	1.0
Palmerston North	0	1	-	-	-	1	1.0	1.0
Wanganui	0	1	-	-	-	1	2.0	2.0
Nelson	0	-	-	-	-	0	-	-
Blenheim	0	-	-	-	-	0	-	-
Wellington Circuit	32	14	9	2	-	35	33.4	33.4
Christchurch	5	2	2	-	-	5	4.2	4.2
Timaru	0	-	-	-	-	0	-	-
Dunedin	2	-	1	-	-	1	0.6	0.6
Invercargill	1	-	-	-	-	1	0.6	0.6
Greymouth	0	-	-	-	-	0	-	-
Christchurch Circuit	8	2	3	-	-	7	5.4	5.4
NATIONAL TOTAL	101	26	31	9	-	87	96.8	96.8

High Court Business On Hand Summary

Comparative Quarterly Figures for the Year Ending 30 March 2008

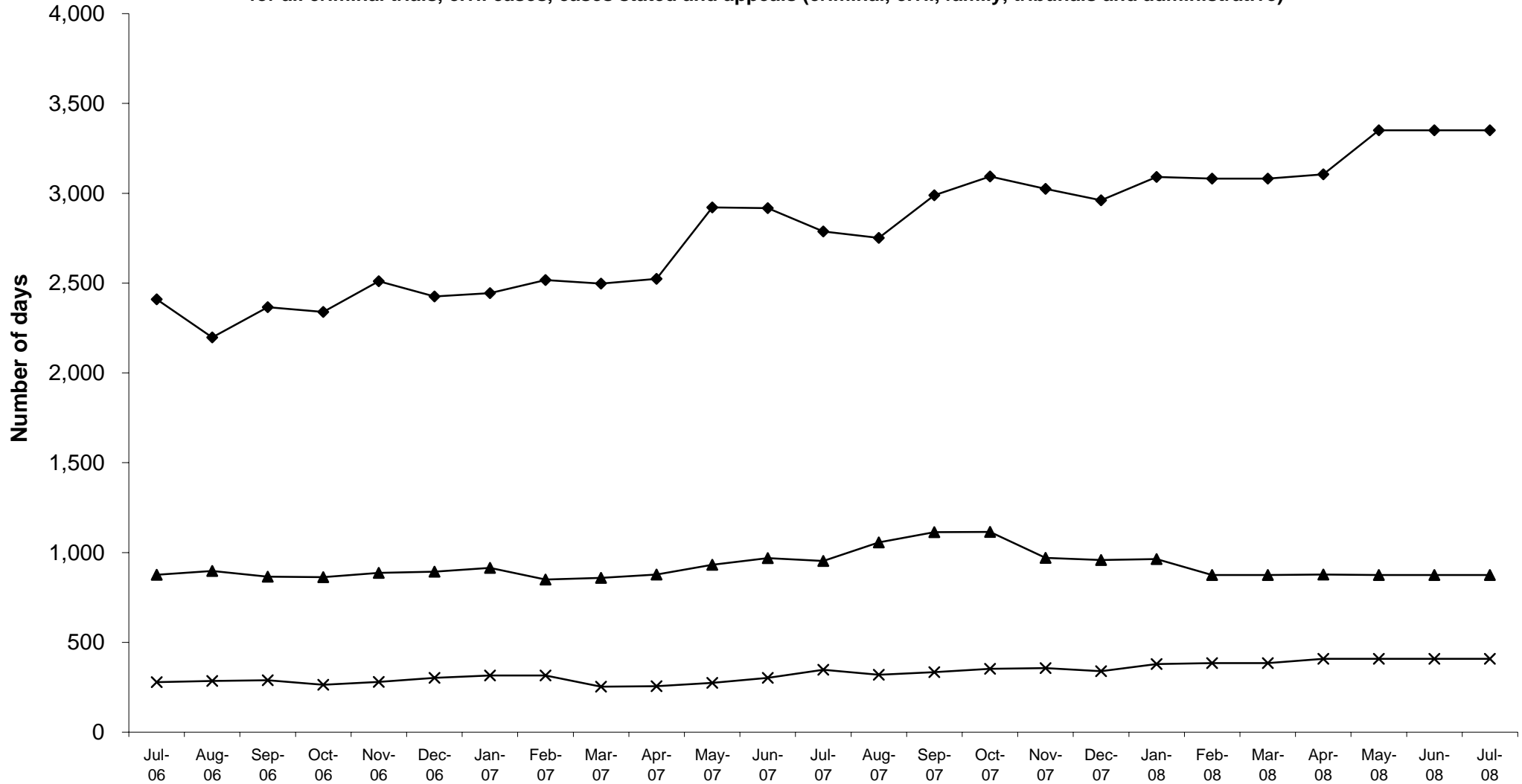
Comparative Monthly Figures for the Four Months to 31 July 2008

ESTIMATED SITTING DAYS									
Work on hand in estimated sitting days for all criminal trials, civil cases, cases stated and appeals (criminal, civil, family, tribunals and administrative)									
High Court	Quarterly			Quarterly		Months	Months		
	Mar-07	Jun-07	Sep-07	Dec-07	Mar-08	Apr-08	May-08	Jun-08	Jul-08
Auckland	1,850.7	2,316.7	2,463.1	2,393.0	2,393.5	2,390.0	2,640.1	2,640.1	2,640.1
Whangarei	98.4	85.7	62.8	79.3	108.6	110.6	119.4	119.4	119.4
Gisborne	34.5	26.0	28.0	22.0	18.0	18.0	11.5	11.5	11.5
Rotorua	242.0	238.0	209.5	250.3	294.0	313.5	326.5	326.5	326.5
New Plymouth	40.4	50.4	33.1	34.3	27.8	20.5	23.2	23.2	23.2
Hamilton	231.3	200.8	192.8	181.4	240.0	252.7	230.3	230.3	230.3
Auckland Circuit	2,497.3	2,917.6	2,989.3	2,960.3	3,081.9	3,105.3	3,351.0	3,351.0	3,351.0
Wellington	682.0	704.1	817.1	680.9	636.8	625.0	656.0	656.0	656.0
Palmerston North	31.7	32.7	44.6	47.6	55.8	59.7	70.1	70.1	70.1
Napier	62.0	98.5	111.5	117.5	108.0	118.5	77.0	77.0	77.0
Wanganui	42.0	47.5	24.5	10.5	6.5	10.5	11.0	11.0	11.0
Nelson	8.6	53.3	82.3	77.7	38.5	40.9	45.2	45.2	45.2
Blenheim	32.0	32.8	33.8	24.0	29.2	23.0	15.2	15.2	15.2
Wellington Circuit	858.3	968.9	1,113.8	958.2	874.8	877.6	874.5	874.5	874.5
Christchurch	195.0	218.1	222.6	230.5	248.1	251.0	276.5	276.5	276.5
Greymouth	10.0	1.0	1.6	0.2	2.5	2.5	2.5	2.5	2.5
Dunedin	19.7	45.7	96.9	92.4	106.5	122.2	94.8	94.8	94.8
Timaru	10.0	9.2	3.5	4.1	11.5	13.0	12.7	12.7	12.7
Invercargill	18.4	28.0	9.2	11.6	16.4	20.0	22.1	22.1	22.1
Christchurch Circuit	253.1	302.0	333.8	338.8	385.0	408.7	408.6	408.6	408.6
NATIONAL TOTAL	3,608.7	4,188.5	4,436.9	4,257.3	4,341.7	4,391.6	4,634.1	4,634.1	4,634.1

High Court Business on Hand Summary

Estimated Sitting Days

for all criminal trials, civil cases, cases stated and appeals (criminal, civil, family, tribunals and administrative)



	Jul-06	Aug-06	Sep-06	Oct-06	Nov-06	Dec-06	Jan-07	Feb-07	Mar-07	Apr-07	May-07	Jun-07	Jul-07	Aug-07	Sep-07	Oct-07	Nov-07	Dec-07	Jan-08	Feb-08	Mar-08	Apr-08	May-08	Jun-08	Jul-08
◆ Auckland Circuit	2,409.8	2,197.6	2,366.3	2,339.0	2,510.0	2,424.8	2,443.4	2,517.0	2,497.3	2,524.0	2,921.3	2,917.6	2,787.2	2,750.9	2,989.3	3,093.0	3,023.9	2,960.3	3,091.2	3,081.9	3,081.9	3,105.3	3,351.0	3,351.0	3,351.0
▲ Wellington Circuit	875.7	897.6	865.1	862.4	886.3	892.8	915.2	849.3	858.3	877.6	932.3	968.9	952.4	1,056.8	1,113.8	1,114.2	970.2	958.2	963.0	874.8	874.8	877.6	874.5	874.5	874.5
✕ Christchurch Circuit	277.8	284.4	289.0	264.3	279.7	301.9	315.2	315.4	253.1	256.3	274.2	302.0	347.6	319.6	333.8	352.7	356.3	338.8	379.3	385.0	385.0	408.7	408.6	408.6	408.6