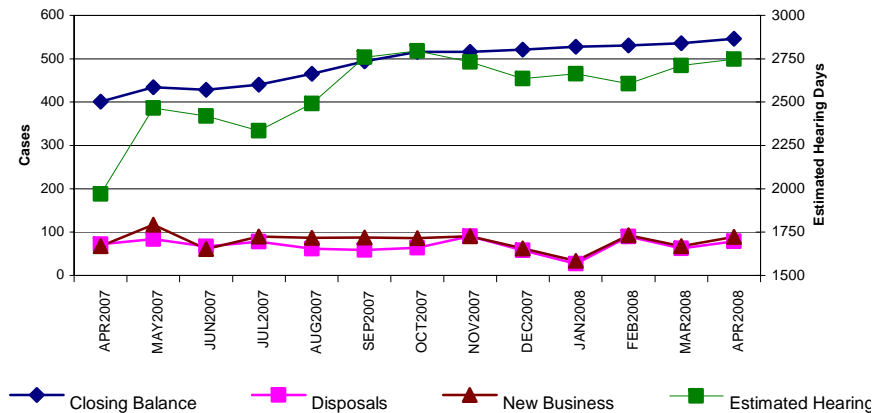


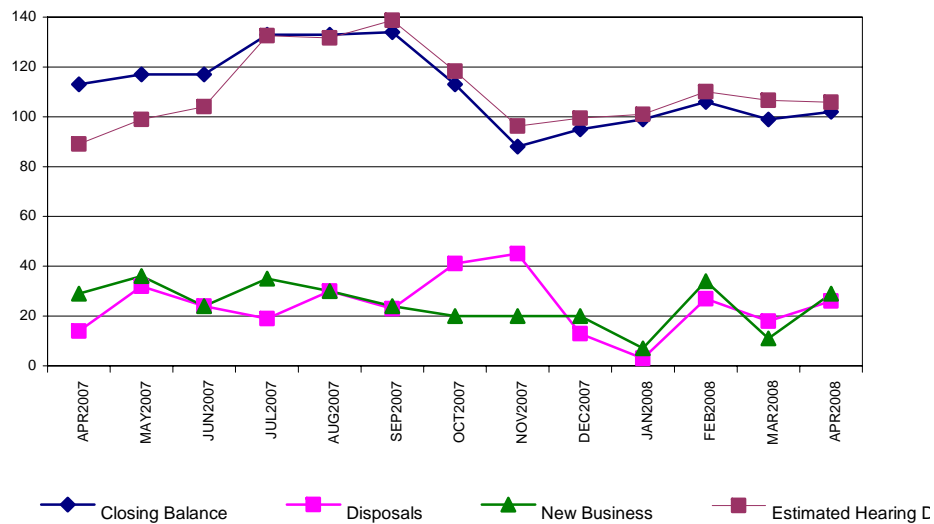
## Higher Courts - Caseload Trends

### High Court – Civil Proceedings



1. As at 30 April 2008, outstanding civil proceedings numbered 546, an increase of 36% from the 402 on hand as at the end of April 2007. Correspondingly, estimated hearing days required at the end of April 2008 were 2748, up from 1971 in April 2007.
2. New business for the month of April 2008 was 89, an increase of 29% on the 69 in April 2007.
3. Disposals in April 2008 numbered 79, an increase of 9.7% on 72 in April 2007.

### High Court – Civil Appeals

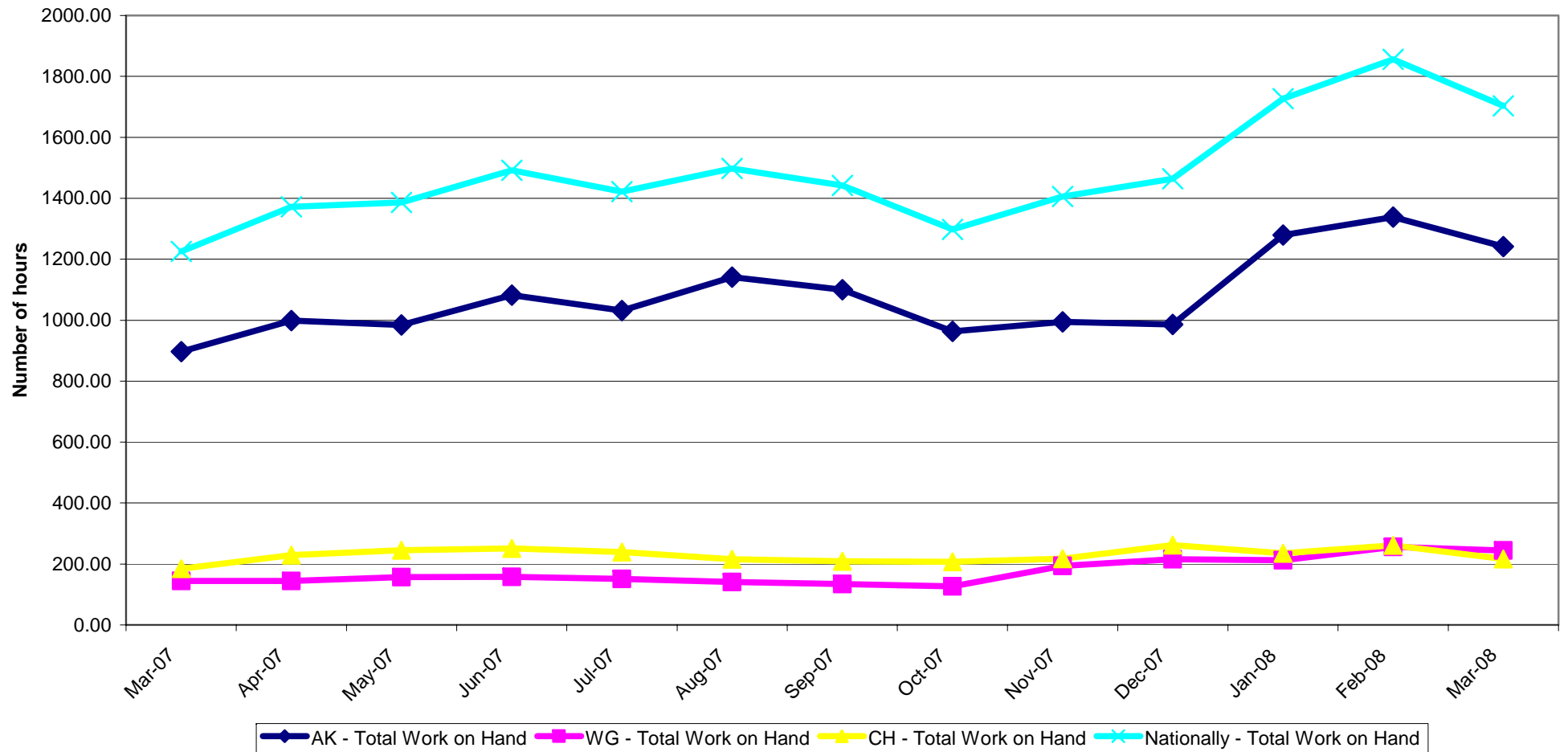


1. As at 30 April 2008, 102 civil appeals were outstanding nationally, down 11 from 113 as at the end of April 2007. Estimated hearing days in April 2008 were 106, up from the April 2007 estimate of 89 days.
2. In April 2008, new business amounted to 29, the same figure as in April 2007.
3. There were 26 disposals in April 2008, an increase of 85% from the 14 appeals disposed of in April 2007.

### High Court – Associate Judge Workload

The workload of High Court Associate Judges includes the total time for matters outstanding and allocated fixture time.

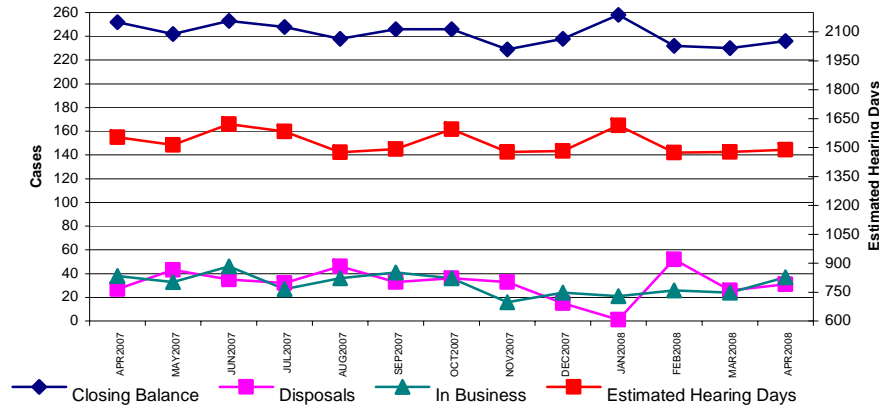
**Workload of Associate Judges - Circuit and National - 12 months**



**\* Please note that, as at 16 May 2008, the April 2008 figures had not been finalised – thus only the March 2008 stats have been provided.**

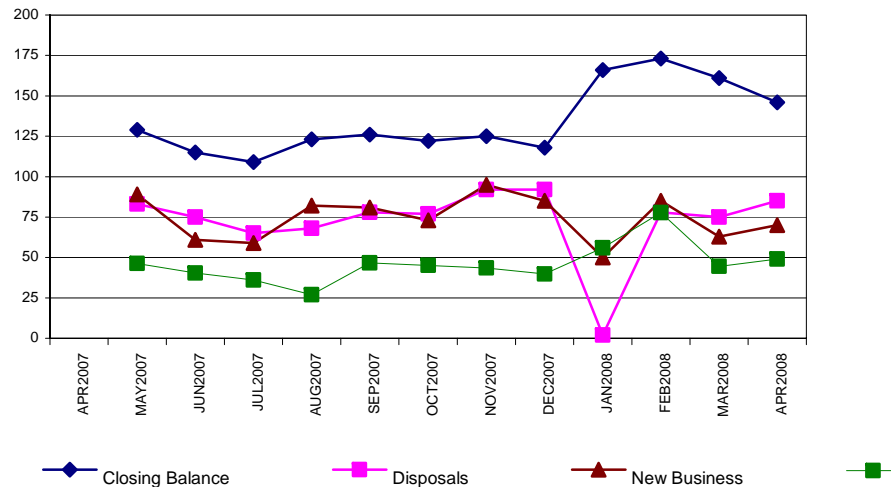
## Higher Courts - Caseload Trends

### High Court – Criminal Jury Trials



1. The number of trials on hand as at 30 April 2008 was 236, a decrease of 6.8% from 252 as at 30 April 2007. The estimated hearing days required to hear these trials is 1488 days compared to 1554 as at 30 April 2007.
2. The number of jury trials disposed in April 2008 was 31, compared to 28 in April 2007
3. New trials received during April 2008 were 37, a decrease of 5% from 39 in April 2007.
4. The clearance rate for the month of April 2008 was therefore 0.83.

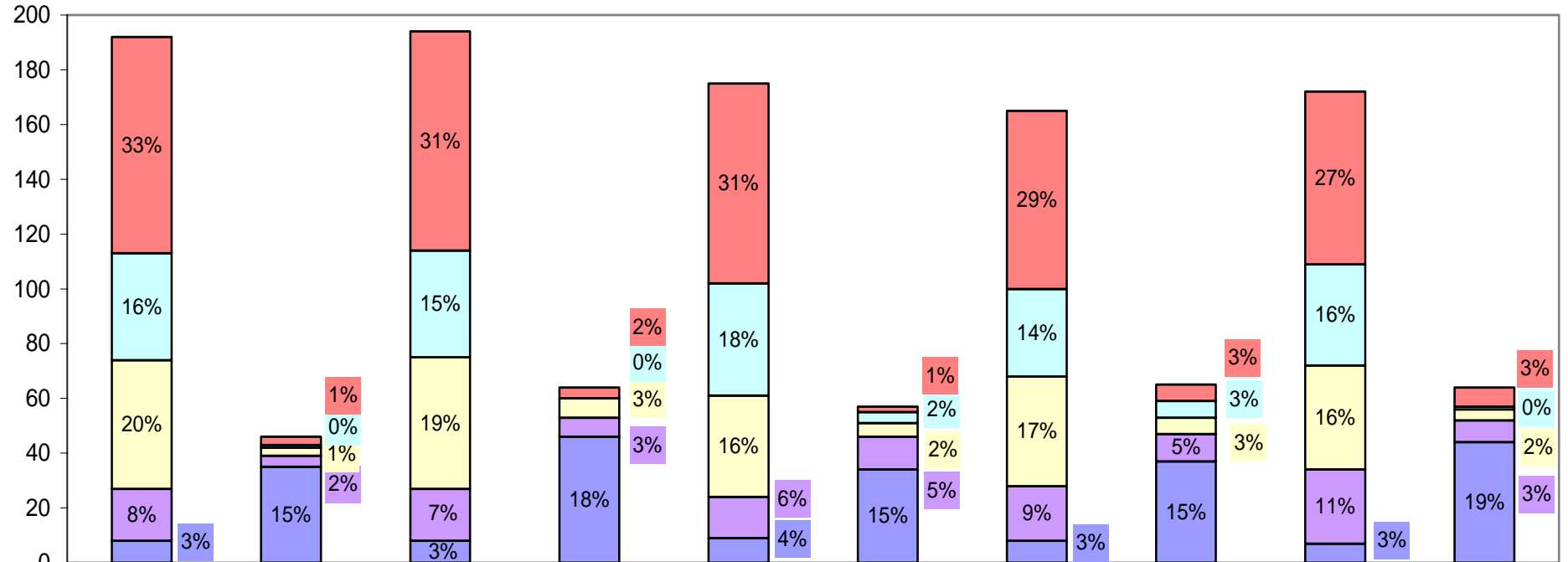
### High Court – Criminal Appeals



1. As at 30 April 2008, 146 criminal appeals were on hand, an increase of 18.7% from 123 at 30 April 2007. The number of estimated hearing days required to dispose of the appeals on hand at the end of April 2008 was 49 days, compared with 41 days at the end of April 2007.
2. There were 85 disposals in April 2008, an increase of 21.4% from the 70 disposals in April 2007.
3. There were 70 new criminal appeals received in April 2008, an increase of 9% from 64 new appeals in April 2007.
4. The clearance rate for the month of April 2008 was therefore 1.21.

## High Court Criminal Jury Trials

### Age of Trials - 31 December 2007 to 30 April 2008



	As at 31/12/07 - to trial date	As at 31/12/07 - no trial date	As at 31/01/08 - to trial date	As at 31/01/08 - no trial date	As at 29/02/08 - to trial date	As at 29/02/08 - no trial date	As at 31/03/08 - to trial date	As at 31/03/08 - no trial date	As at 30/4/08 - to trial date	As at 30/4/08 - no trial date
> 18 months	79	3	80	4	73	2	65	6	63	7
15-18 months	39	1	39	0	41	4	32	6	37	1
12-15 months	47	3	48	7	37	5	40	6	38	4
9-12 months	19	4	19	7	15	12	20	10	27	8
< 9 months	8	35	8	46	9	34	8	37	7	44

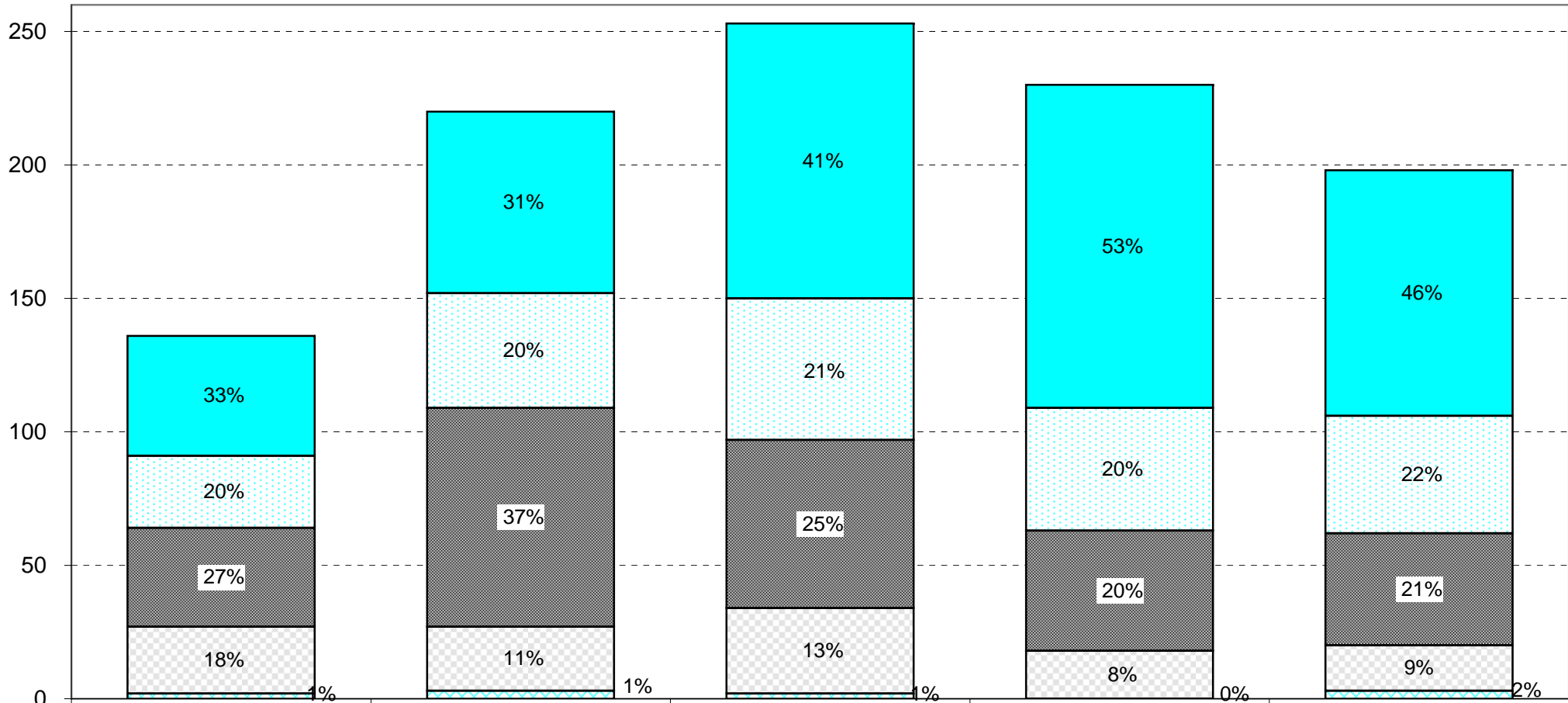
Throughput and Outstanding Workload for High Court Criminal Jury Trials - May 2007 to April 2008																					
Court	Opening Balance	New Business	Retrials Directed	Transfers In	Warrants Executed	Number of Cases Disposed			Warrants Issued	Transfers out	Merged/ Deleted	Hung Juries	Mis-trials	Closing Balance	Age of Outstanding Cases - Months					Estimated Hearing Days	
						Heard	Before the day	On the day							< 3	3-6	6-9	9-12	> 12		
Auckland	98	132	13	0	1	61	54	16	1	8	9	5	3	87	0	1	9	16	61	633	
Whangarei	14	17	1	1	0	8	5	8	1	0	1	0	0	10	0	0	4	4	2	45	
Rotorua	29	43	-	0	2	21	6	4	4	0	0	0	0	39	1	5	9	11	13	209	
Gisborne	3	3	-	1	0	2	1	1	0	0	0	0	0	3	0	0	1	0	2	13	
New Plymouth	5	5	-	0	0	5	0	2	1	0	0	0	0	2	0	0	2	0	0	6	
Hamilton	31	40	4	0	0	14	16	12	0	1	2	3	0	27	2	4	10	4	7	114	
<b>Auckland Circuit</b>	<b>180</b>	<b>240</b>	<b>18</b>	<b>2</b>	<b>3</b>	<b>111</b>	<b>82</b>	<b>43</b>	<b>7</b>	<b>9</b>	<b>12</b>	<b>8</b>	<b>3</b>	<b>168</b>	<b>3</b>	<b>10</b>	<b>35</b>	<b>35</b>	<b>85</b>	<b>1,020</b>	
Wellington	22	30	-	0	0	16	13	5	0	0	2	0	0	16	0	1	2	4	9	77	
Napier	15	18	1	0	0	12	3	5	1	0	0	1	0	12	0	0	3	5	4	75	
Palmerston North	5	9	1	0	0	2	3	0	1	0	0	1	0	8	0	1	3	1	3	41	
Wanganui	5	3	1	0	0	4	2	0	0	0	1	0	0	2	0	1	0	0	1	10	
Nelson	3	4	-	1	0	2	1	0	0	0	2	0	0	3	0	0	0	1	2	26	
Blenheim	1	3	-	0	0	2	0	0	0	0	0	0	0	2	0	0	1	1	0	13	
<b>Wellington Circuit</b>	<b>51</b>	<b>67</b>	<b>3</b>	<b>1</b>	<b>0</b>	<b>38</b>	<b>22</b>	<b>10</b>	<b>2</b>	<b>0</b>	<b>5</b>	<b>2</b>	<b>0</b>	<b>43</b>	<b>0</b>	<b>3</b>	<b>9</b>	<b>12</b>	<b>19</b>	<b>242</b>	
Christchurch	12	29	1	0	0	8	15	1	1	0	1	0	0	16	0	3	5	4	4	121	
Timaru	2	2	-	0	0	0	2	0	0	0	0	0	0	2	0	1	0	1	0	7	
Dunedin	2	8	1	0	0	0	4	0	0	0	0	0	0	7	0	3	1	2	1	98	
Invercargill	4	1	-	0	0	2	2	1	0	0	0	0	0	0	0	0	0	0	0	0	
Greymouth	1	-	-	0	0	1	0	0	0	0	0	0	0	0	0	0	0	0	0	0	
<b>Christchurch Circuit</b>	<b>21</b>	<b>40</b>	<b>2</b>	<b>0</b>	<b>0</b>	<b>11</b>	<b>23</b>	<b>2</b>	<b>1</b>	<b>0</b>	<b>1</b>	<b>0</b>	<b>0</b>	<b>25</b>	<b>0</b>	<b>7</b>	<b>6</b>	<b>7</b>	<b>5</b>	<b>226</b>	
<b>NATIONAL TOTAL</b>	<b>252</b>	<b>347</b>	<b>23</b>	<b>3</b>	<b>3</b>	<b>160</b>	<b>127</b>	<b>55</b>	<b>10</b>	<b>9</b>	<b>18</b>	<b>10</b>	<b>3</b>	<b>236</b>	<b>3</b>	<b>20</b>	<b>50</b>	<b>54</b>	<b>109</b>	<b>1,488</b>	

**Notes:**

- 1) Transfer out refers to the transfer of another trial within the same Jurisdiction and a transfer of a trial to another Jurisdiction.
- 2) In calculating the closing balance for an individual court, the cases transferred out are considered to be disposed.
- 3) Remanded in custody status is collected at the time of committal only.

Court	Throughput and Outstanding Workload for High Court Criminal Jury Trials - April 2008 (Manual)														Estimated Hearing Days					
	Opening Balance	New Business	Retrials Directed	Transfers In	Warrants Executed	Number of Cases Disposed			Warrants Issued	Transfer out	Merged/ Deleted	Hung Juries	Mis-trials	Closing Balance		Age of Outstanding Cases - Months				
						Heard	Before the day	On the day								< 3	3-6	6-9	9-12	> 12
Auckland	89	8	1	0	0	5	5	1	0	0	0	0	0	87	0	1	9	16	61	633
Whangarei	11	2	0	0	0	1	0	1	0	0	1	0	0	10	0	0	4	4	2	45
Rotorua	38	5	0	0	0	4	0	0	0	0	0	0	0	39	1	5	9	11	13	209
Gisborne	3	0	0	0	0	0	0	0	0	0	0	0	0	3	0	0	1	0	2	13
New Plymouth	4	0	0	0	0	1	0	1	0	0	0	0	0	2	0	0	2	0	0	6
Hamilton	24	7	0	0	0	1	1	2	0	0	0	0	0	27	2	4	10	4	7	114
<b>Auckland Circuit</b>	<b>169</b>	<b>22</b>	<b>1</b>	<b>0</b>	<b>0</b>	<b>12</b>	<b>6</b>	<b>5</b>	<b>0</b>	<b>0</b>	<b>1</b>	<b>0</b>	<b>0</b>	<b>168</b>	<b>3</b>	<b>10</b>	<b>35</b>	<b>35</b>	<b>85</b>	<b>1020</b>
Wellington	20	0	0	0	0	1	2	1	0	0	0	0	0	16	0	1	2	4	9	77
Napier	10	2	0	0	0	0	0	0	0	0	0	0	0	12	0	0	3	5	4	75
Palmerston North	7	1	0	0	0	0	0	0	0	0	0	0	0	8	0	1	3	1	3	41
Wanganui	1	1	1	0	0	0	1	0	0	0	0	0	0	2	0	1	0	0	1	10
Nelson	2	1	0	0	0	0	0	0	0	0	0	0	0	3	0	0	0	1	2	26
Blenheim	3	0	0	0	0	1	0	0	0	0	0	0	0	2	0	0	1	1	0	13
<b>Wellington Circuit</b>	<b>43</b>	<b>5</b>	<b>1</b>	<b>0</b>	<b>0</b>	<b>2</b>	<b>3</b>	<b>1</b>	<b>0</b>	<b>0</b>	<b>0</b>	<b>0</b>	<b>0</b>	<b>43</b>	<b>0</b>	<b>3</b>	<b>9</b>	<b>12</b>	<b>19</b>	<b>242</b>
Christchurch	13	4	0	0	0	1	0	0	0	0	0	0	0	16	0	3	5	4	4	121
Timaru	1	1	0	0	0	0	0	0	0	0	0	0	0	2	0	1	0	1	0	7
Dunedin	4	3	0	0	0	0	0	0	0	0	0	0	0	7	0	3	1	2	1	98
Invercargill	0	0	0	0	0	0	0	0	0	0	0	0	0	0	0	0	0	0	0	0
Greymouth	0	0	0	0	0	0	0	0	0	0	0	0	0	0	0	0	0	0	0	0
<b>Christchurch Circuit</b>	<b>18</b>	<b>8</b>	<b>0</b>	<b>0</b>	<b>0</b>	<b>1</b>	<b>0</b>	<b>0</b>	<b>0</b>	<b>0</b>	<b>0</b>	<b>0</b>	<b>0</b>	<b>25</b>	<b>0</b>	<b>7</b>	<b>6</b>	<b>7</b>	<b>5</b>	<b>226</b>
<b>NATIONAL TOTAL</b>	<b>230</b>	<b>35</b>	<b>2</b>	<b>0</b>	<b>0</b>	<b>15</b>	<b>9</b>	<b>6</b>	<b>0</b>	<b>0</b>	<b>1</b>	<b>0</b>	<b>0</b>	<b>236</b>	<b>3</b>	<b>20</b>	<b>50</b>	<b>54</b>	<b>109</b>	<b>1488</b>

**High Court Criminal Jury Trials**  
*Ages of Cases on Hand*



	As at 30 June 2005	As at 30 June 2006	As at 30 June 2007	As at 31 March 2008	As at 30 April 2008
> 12 months	45	68	103	121	92
9-12 months	27	43	53	46	44
6-9 months	37	82	63	45	42
3-6 months	25	24	32	18	17
< 3 months	2	3	2	0	3

Throughput and Outstanding Workload for High Court Civil Cases - May 2007 to April 2008								
Court	Opening Balance	New Cases	Number of Cases Actioned			Closing Balance	Estimated Hearing Days	
			Heard	Before the day	On the day		April 07	April 08
Auckland	197	489	165	186	4	331	1,099	1,693
Whangarei	9	11	7	3	-	10	32	61
Rotorua	14	45	8	23	6	22	63	97
Gisborne	2	2	1	-	1	2	12	4
New Plymouth	9	11	11	5	-	4	28	11
Hamilton	10	52	12	25	-	24	16	127
<b>Auckland Circuit</b>	<b>241</b>	<b>610</b>	<b>204</b>	<b>242</b>	<b>11</b>	<b>393</b>	<b>1,249</b>	<b>1,993</b>
Wellington	103	192	125	81	-	89	509	519
Napier	7	17	3	3	7	11	18	40
Palmerston North	2	11	5	2	3	3	6	16
Wanganui	2	4	5	1	-	0	14	-
Nelson	5	14	8	6	-	5	4	15
Blenheim	7	3	3	5	-	2	28	9
<b>Wellington Circuit</b>	<b>126</b>	<b>241</b>	<b>149</b>	<b>98</b>	<b>10</b>	<b>110</b>	<b>579</b>	<b>598</b>
Christchurch	30	86	52	28	5	31	124	114
Timaru	0	2	-	-	-	2	-	5
Dunedin	1	20	5	8	2	6	5	21
Invercargill	3	8	2	4	1	4	15	17
Greymouth	0	1	1	-	-	0	-	-
<b>Christchurch Circuit</b>	<b>34</b>	<b>117</b>	<b>60</b>	<b>40</b>	<b>8</b>	<b>43</b>	<b>144</b>	<b>157</b>
<b>NATIONAL TOTAL</b>	<b>401</b>	<b>968</b>	<b>413</b>	<b>380</b>	<b>29</b>	<b>546</b>	<b>1,971</b>	<b>2,748</b>

Throughput and Outstanding Workload for High Court Civil Cases - April 2008								
Court	Opening Balance	New Cases	Number of Cases Actioned			Closing Balance	Estimated Hearing Days	
			Heard	Before the day	On the day		Last Month	This Month
Auckland	315	48	19	13	-	331	1,671	1,693
Whangarei	10	1	1	-	-	10	55	61
Rotorua	20	5	1	2	-	22	89	97
Gisborne	1	1	-	-	-	2	4	4
New Plymouth	3	2	1	-	-	4	10	11
Hamilton	20	7	-	3	-	24	112	127
<b>Auckland Circuit</b>	<b>369</b>	<b>64</b>	<b>22</b>	<b>18</b>	<b>-</b>	<b>393</b>	<b>1,940</b>	<b>1,993</b>
Wellington	101	11	15	8	-	89	522	519
Napier	10	2	-	1	-	11	36	40
Palmerston North	4	-	-	1	-	3	17	16
Wanganui	1	-	1	-	-	0	1	-
Nelson	6	-	-	1	-	5	18	15
Blenheim	2	-	-	-	-	2	9	9
<b>Wellington Circuit</b>	<b>124</b>	<b>13</b>	<b>16</b>	<b>11</b>	<b>-</b>	<b>110</b>	<b>602</b>	<b>598</b>
Christchurch	31	9	5	3	1	31	128	114
Timaru	2	-	-	-	-	2	5	5
Dunedin	7	1	-	1	1	6	22	21
Invercargill	3	2	-	1	-	4	15	17
Greymouth	0	-	-	-	-	0	-	-
<b>Christchurch Circuit</b>	<b>43</b>	<b>12</b>	<b>5</b>	<b>5</b>	<b>2</b>	<b>43</b>	<b>170</b>	<b>157</b>
<b>NATIONAL TOTAL</b>	<b>536</b>	<b>89</b>	<b>43</b>	<b>34</b>	<b>2</b>	<b>546</b>	<b>2,712</b>	<b>2,748</b>

<b>Throughput and Outstanding Workload for High Court Criminal Appeal Cases - May 2007 to April 2008</b>									
Court	Opening Balance	New Cases	Number of Cases Actioned			Closing Balance	Estimated Hearing Days		
			Heard	Before the day	On the day		April 07	April 08	
Auckland	35	139	117	20	6	31	15.0	15.0	
Whangarei	7	38	34	4	2	7	1.8	1.6	
Rotorua	15	102	105	4	-	11	5.0	3.5	
Gisborne	1	16	11	4	-	3	1.0	1.0	
New Plymouth	1	26	16	3	4	3	-	1.5	
Hamilton	8	61	51	16	1	1	3.3	0.2	
<b>Auckland Circuit</b>	<b>67</b>	<b>382</b>	<b>334</b>	<b>51</b>	<b>13</b>	<b>56</b>	<b>26.10</b>	<b>22.80</b>	
Wellington	23	80	80	-	-	19	4.5	4.5	
Napier	6	17	14	1	1	6	2.0	2.5	
Palmerston North	4	42	34	6	1	7	1.3	1.8	
Wanganui	0	26	23	1	-	2	-	0.5	
Nelson	2	23	21	2	-	2	0.8	0.4	
Blenheim	2	8	4	1	2	1	-	1.0	
<b>Wellington Circuit</b>	<b>37</b>	<b>196</b>	<b>176</b>	<b>11</b>	<b>4</b>	<b>37</b>	<b>8.6</b>	<b>10.7</b>	
Christchurch	15	189	161	13	0	28	4.4	8.0	
Timaru	0	16	12	2	0	4	0.3	1.0	
Dunedin	2	56	35	10	2	10	0.2	2.0	
Invercargill	3	41	31	6	1	6	1.4	2.0	
Greymouth	1	13	3	5	0	5	-	2.5	
<b>Christchurch Circuit</b>	<b>21</b>	<b>315</b>	<b>242</b>	<b>36</b>	<b>3</b>	<b>53</b>	<b>6.3</b>	<b>15.5</b>	
<b>NATIONAL TOTAL</b>	<b>125</b>	<b>893</b>	<b>752</b>	<b>98</b>	<b>20</b>	<b>146</b>	<b>41.0</b>	<b>49.0</b>	

<b>Throughput and Outstanding Workload for High Court Criminal Appeals - April 2008</b>									
<b>Court</b>	<b>Opening Balance</b>	<b>New Cases</b>	<b>Number of Cases Actioned</b>			<b>Closing Balance</b>	<b>Estimated Hearing Days</b>		
			<b>Heard</b>	<b>Before the day</b>	<b>On the day</b>		<b>Last Month</b>	<b>This Month</b>	
Auckland	41	8	14	2	2	31	9.5	15.0	
Whangarei	6	1	-	-	-	7	1.6	1.6	
Rotorua	19	7	13	2	-	11	6.5	3.5	
Gisborne	3	1	-	1	-	3	1.0	1.0	
New Plymouth	5	3	5	-	-	3	1.5	1.5	
Hamilton	3	2	4	-	-	1	0.5	0.2	
<b>Auckland Circuit</b>	<b>77</b>	<b>22</b>	<b>36</b>	<b>5</b>	<b>2</b>	<b>56</b>	<b>20.6</b>	<b>22.8</b>	
Wellington	21	6	8	-	-	19	6.0	4.5	
Napier	5	1	-	-	-	6	2.0	2.5	
Palmerston North	6	8	5	2	-	7	1.4	1.8	
Wanganui	0	3	1	-	-	2	-	0.5	
Nelson	0	2	-	-	-	2	-	0.4	
Blenheim	4	-	3	-	-	1	1.2	1.0	
<b>Wellington Circuit</b>	<b>36</b>	<b>20</b>	<b>17</b>	<b>2</b>	<b>-</b>	<b>37</b>	<b>10.6</b>	<b>10.7</b>	
Christchurch	25	17	11	3	-	28	7.5	8.0	
Timaru	5	2	3	-	-	4	1.5	1.0	
Dunedin	11	3	4	-	-	10	1.5	2.0	
Invercargill	2	6	1	1	-	6	0.4	2.0	
Greymouth	5	-	-	-	-	5	2.5	2.5	
<b>Christchurch Circuit</b>	<b>48</b>	<b>28</b>	<b>19</b>	<b>4</b>	<b>-</b>	<b>53</b>	<b>13.4</b>	<b>15.5</b>	
<b>NATIONAL TOTAL</b>	<b>161</b>	<b>70</b>	<b>72</b>	<b>11</b>	<b>2</b>	<b>146</b>	<b>44.6</b>	<b>49.0</b>	

<b>Throughput and Outstanding Workload for High Court Civil &amp; Family Appeals - May 2007 to April 2008</b>										
<b>Court</b>	<b>Opening Balance</b>	<b>New Cases</b>	<b>Number of Cases Actioned</b>			<b>Closing Balance</b>	<b>Estimated Hearing Days</b>			
			<b>Heard</b>	<b>Before the day</b>	<b>On the day</b>		<b>April 08</b>	<b>April 07</b>		
Auckland	16	107	79	11	1	39	15.0	55.5		
Whangarei	2	11	10	2	-	3	1.0	1.5		
Rotorua	5	16	10	2	4	6	2.5	2.0		
Gisborne	0	-	-	-	-	0	-	-		
New Plymouth	1	7	5	1	-	2	0.1	1.8		
Hamilton	10	22	13	9	-	9	12.5	12.5		
<b>Auckland Circuit</b>	<b>34</b>	<b>163</b>	<b>117</b>	<b>25</b>	<b>5</b>	<b>59</b>	<b>31.1</b>	<b>73.3</b>		
Wellington	41	68	58	29	-	29	33.7	21.5		
Napier	3	14	12	3	-	1	1.5	-		
Palmerston North	5	8	8	4	-	1	2.3	-		
Wanganui	1	2	1	2	-	0	1.0	-		
Nelson	1	4	5	-	-	0	0.5	-		
Blenheim	0	1	1	-	-	0	-	1.0		
<b>Wellington Circuit</b>	<b>51</b>	<b>97</b>	<b>85</b>	<b>38</b>	<b>-</b>	<b>31</b>	<b>39.0</b>	<b>22.5</b>		
Christchurch	9	20	15	5	-	9	8.4	9.8		
Timaru	0	1	1	-	-	0	-	-		
Dunedin	4	3	3	1	-	2	4.2	-		
Invercargill	0	6	3	1	1	1	-	1.0		
Greymouth	0	-	-	-	-	0	-	-		
<b>Christchurch Circuit</b>	<b>13</b>	<b>30</b>	<b>22</b>	<b>7</b>	<b>1</b>	<b>12</b>	<b>12.6</b>	<b>10.8</b>		
<b>NATIONAL TOTAL</b>	<b>98</b>	<b>290</b>	<b>224</b>	<b>70</b>	<b>6</b>	<b>102</b>	<b>82.7</b>	<b>106.6</b>		

Throughput and Outstanding Workload for High Court Civil & Family Appeals - April 2008								
Court	Opening Balance	New Cases	Number of Cases Actioned			Closing Balance	Estimated Hearing Days	
			Heard	Before the day	On the day		Last Month	This Month
Auckland	44	7	11	1	-	39	56	49
Whangarei	2	2	1	-	-	3	1.5	3.0
Rotorua	3	4	1	-	-	6	2.0	4
Gisborne	0	-	-	-	-	0	-	-
New Plymouth	3	1	1	1	-	2	1.80	2.0
Hamilton	10	-	1	-	-	9	12.5	11.5
<b>Auckland Circuit</b>	<b>62</b>	<b>14</b>	<b>15</b>	<b>2</b>	<b>-</b>	<b>59</b>	<b>73.3</b>	<b>69.5</b>
Wellington	24	11	2	4	-	29	21.5	25.0
Napier	0	1	-	-	-	1	-	0.5
Palmerston North	0	1	-	-	-	1	-	0.5
Wanganui	0	-	-	-	-	0	-	-
Nelson	0	-	-	-	-	0	-	-
Blenheim	1	-	1	-	-	0	1.0	-
<b>Wellington Circuit</b>	<b>25</b>	<b>13</b>	<b>3</b>	<b>4</b>	<b>-</b>	<b>31</b>	<b>22.5</b>	<b>26.0</b>
Christchurch	11	-	1	1	-	9	9.8	8.2
Timaru	0	-	-	-	-	0	-	-
Dunedin	0	2	-	-	-	2	-	1.2
Invercargill	1	-	-	-	-	1	1.0	1.0
Greymouth	0	-	-	-	-	0	-	-
<b>Christchurch Circuit</b>	<b>12</b>	<b>2</b>	<b>1</b>	<b>1</b>	<b>-</b>	<b>12</b>	<b>10.8</b>	<b>10.4</b>
<b>NATIONAL TOTAL</b>	<b>99</b>	<b>29</b>	<b>19</b>	<b>7</b>	<b>-</b>	<b>102</b>	<b>106.6</b>	<b>105.9</b>

## High Court Business On Hand Summary

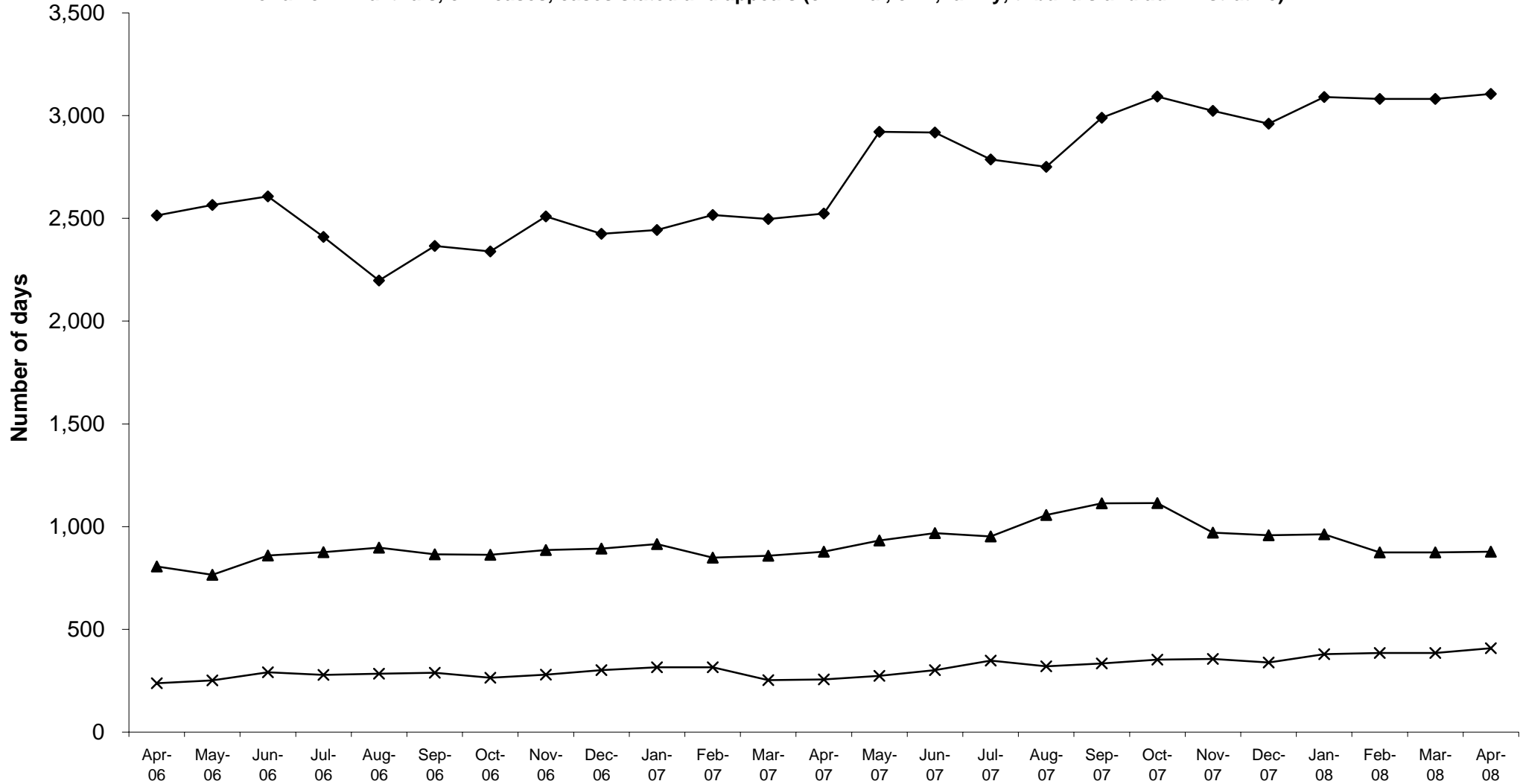
Comparative Quarterly Figures for the Year Ending 31 March 2008 and  
Comparative Monthly Figures for the Four Months to 30 April 2008

<b>ESTIMATED SITTING DAYS</b>								
Work on hand in estimated sitting days for all criminal trials, civil cases, cases stated and appeals (criminal, civil, family, tribunals and administrative)								
High Court	Quarterly				Months			
	Mar-07	Jun-07	Sep-07	Dec-07	Jan-08	Feb-08	Mar-08	Apr-08
Auckland	1,850.7	2,316.7	2,463.1	2,393.0	2,423.0	2,393.5	2,393.5	2,390.0
Whangarei	98.4	85.7	62.8	79.3	80.7	108.6	108.6	110.6
Gisborne	34.5	26.0	28.0	22.0	22.6	18.0	18.0	18.0
Rotorua	242.0	238.0	209.5	250.3	280.0	294.0	294.0	313.5
New Plymouth	40.4	50.4	33.1	34.3	35.5	27.8	27.8	20.5
Hamilton	231.3	200.8	192.8	181.4	249.4	240.0	240.0	252.7
<b>Auckland Circuit</b>	<b>2,497.3</b>	<b>2,917.6</b>	<b>2,989.3</b>	<b>2,960.3</b>	<b>3,091.2</b>	<b>3,081.9</b>	<b>3,081.9</b>	<b>3,105.3</b>
Wellington	682.0	704.1	817.1	680.9	677.7	636.8	636.8	625.0
Palmerston North	31.7	32.7	44.6	47.6	53.6	55.8	55.8	59.7
Napier	62.0	98.5	111.5	117.5	118.0	108.0	108.0	118.5
Wanganui	42.0	47.5	24.5	10.5	10.5	6.5	6.5	10.5
Nelson	8.6	53.3	82.3	77.7	78.2	38.5	38.5	40.9
Blenheim	32.0	32.8	33.8	24.0	25.0	29.2	29.2	23.0
<b>Wellington Circuit</b>	<b>858.3</b>	<b>968.9</b>	<b>1,113.8</b>	<b>958.2</b>	<b>963.0</b>	<b>874.8</b>	<b>874.8</b>	<b>877.6</b>
Christchurch	195.0	218.1	222.6	230.5	250.7	248.1	248.1	251.0
Greymouth	10.0	1.0	1.6	0.2	0.4	2.5	2.5	2.5
Dunedin	19.7	45.7	96.9	92.4	109.4	106.5	106.5	122.2
Timaru	10.0	9.2	3.5	4.1	4.2	11.5	11.5	13.0
Invercargill	18.4	28.0	9.2	11.6	14.6	16.4	16.4	20.0
<b>Christchurch Circuit</b>	<b>253.1</b>	<b>302.0</b>	<b>333.8</b>	<b>338.8</b>	<b>379.3</b>	<b>385.0</b>	<b>385.0</b>	<b>408.7</b>
<b>NATIONAL TOTAL</b>	<b>3,608.7</b>	<b>4,188.5</b>	<b>4,436.9</b>	<b>4,257.3</b>	<b>4,433.5</b>	<b>4,341.7</b>	<b>4,341.7</b>	<b>4,391.6</b>

# High Court Business on Hand Summary

## Estimated Sitting Days

for all criminal trials, civil cases, cases stated and appeals (criminal, civil, family, tribunals and administrative)



	Apr-06	May-06	Jun-06	Jul-06	Aug-06	Sep-06	Oct-06	Nov-06	Dec-06	Jan-07	Feb-07	Mar-07	Apr-07	May-07	Jun-07	Jul-07	Aug-07	Sep-07	Oct-07	Nov-07	Dec-07	Jan-08	Feb-08	Mar-08	Apr-08
◆ Auckland Circuit	2,513.8	2,565.4	2,607.5	2,409.8	2,197.6	2,366.3	2,339.0	2,510.0	2,424.8	2,443.4	2,517.0	2,497.3	2,524.0	2,921.3	2,917.6	2,787.2	2,750.9	2,989.3	3,093.0	3,023.9	2,960.3	3,091.2	3,081.9	3,081.9	3,105.3
▲ Wellington Circuit	806.4	765.8	859.3	875.7	897.6	865.1	862.4	886.3	892.8	915.2	849.3	858.3	877.6	932.3	968.9	952.4	1,056.8	1,113.8	1,114.2	970.2	958.2	963.0	874.8	874.8	877.6
✕ Christchurch Circuit	237.8	251.4	290.6	277.8	284.4	289.0	264.3	279.7	301.9	315.2	315.4	253.1	256.3	274.2	302.0	347.6	319.6	333.8	352.7	356.3	338.8	379.3	385.0	385.0	408.7