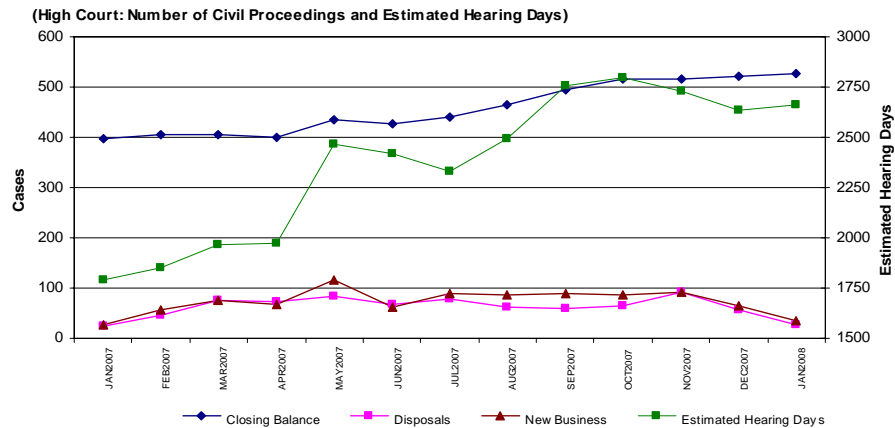


Higher Courts - Caseload Trends

High Court – Civil Proceedings

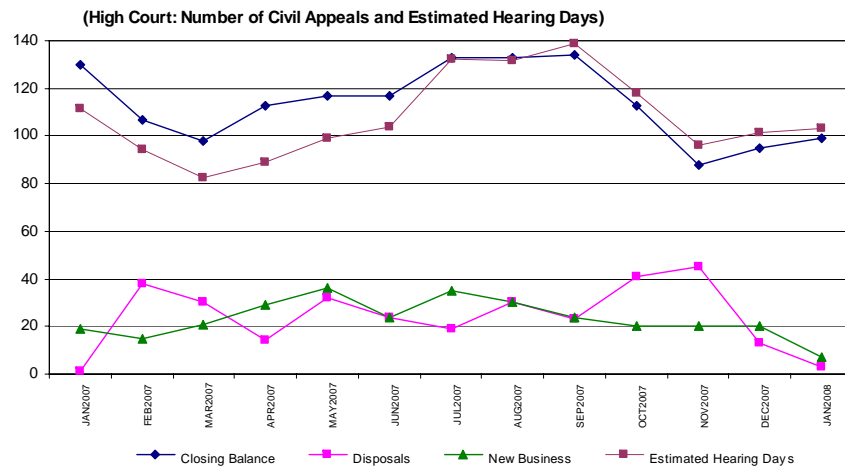


As at 31 January, outstanding civil proceedings numbered 528, up slightly from December when the closing balance was 521.

New business for the month of January was 34, compared to 64 in December. Disposals in January numbered 27, down from 58 in December.

Estimated hearing days required at the end of January were 2662, up from 2636 in December.

High Court – Civil Appeals



As at 31 January, 99 civil appeals were outstanding nationally, up slightly from 95 as at the end of December.

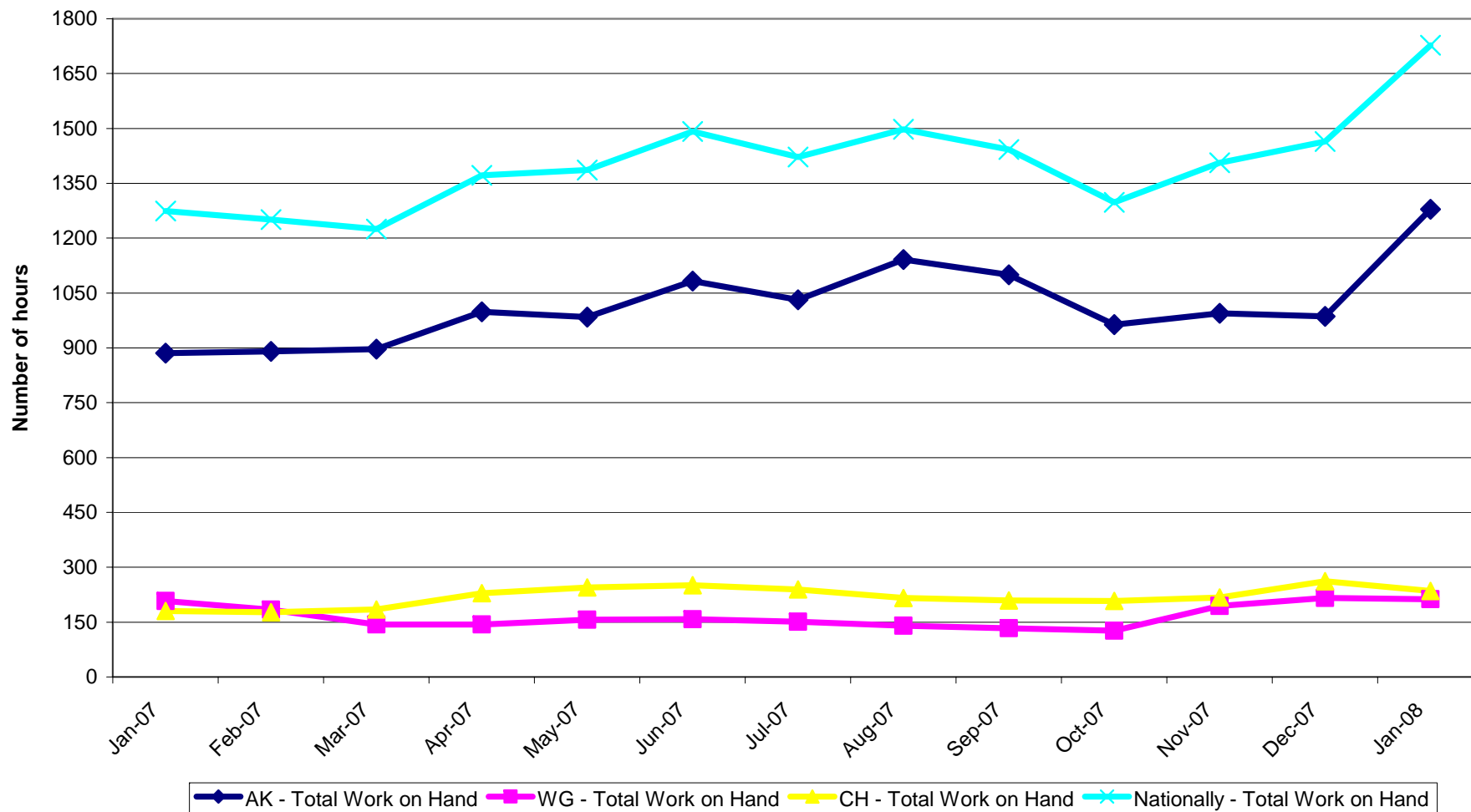
In January new business amounted to 7, down from 20 for December. There were 3 disposals in January, down from 13 disposals in December.

Estimated hearing days in January were 103, identical to December's figure.

High Court – Associate Judge Workload

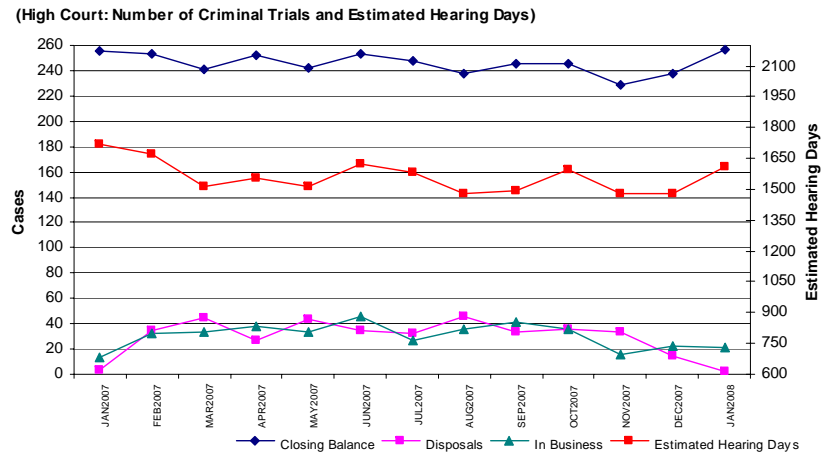
The workload of High Court Associate Judges includes the total time for matters outstanding and allocated fixture time.

Workload of Associate Judges - Circuit and National - 12 months



Higher Courts - Caseload Trends

High Court – Criminal Jury Trials

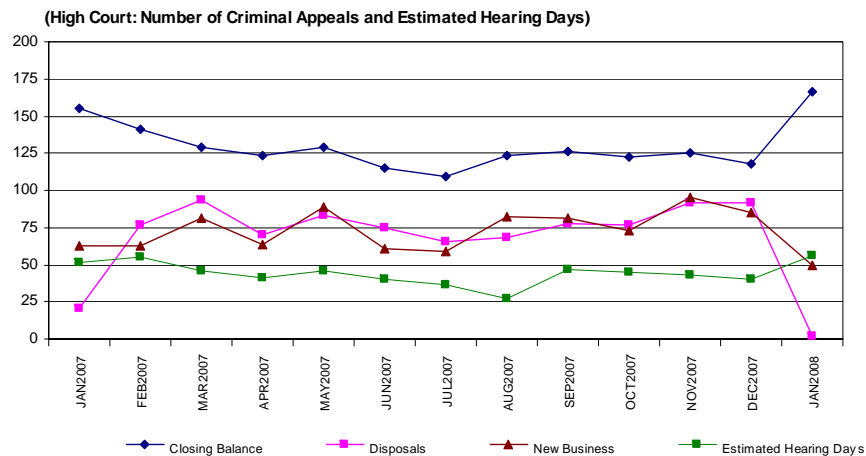


As at 31 January, the number of jury trials outstanding nationally was 258, an increase of 20 from 238 in December. This increase was not unexpected as court sittings are limited during the judicial vacation.

New business increased with 22 new trials, the same as that received in December. Estimated hearing days increased significantly from 1482 at the end of December to 1615 at the end of January.

There were 2 disposals in January, down from 15 disposals in December. Again, this was not unexpected.

High Court – Criminal Appeals



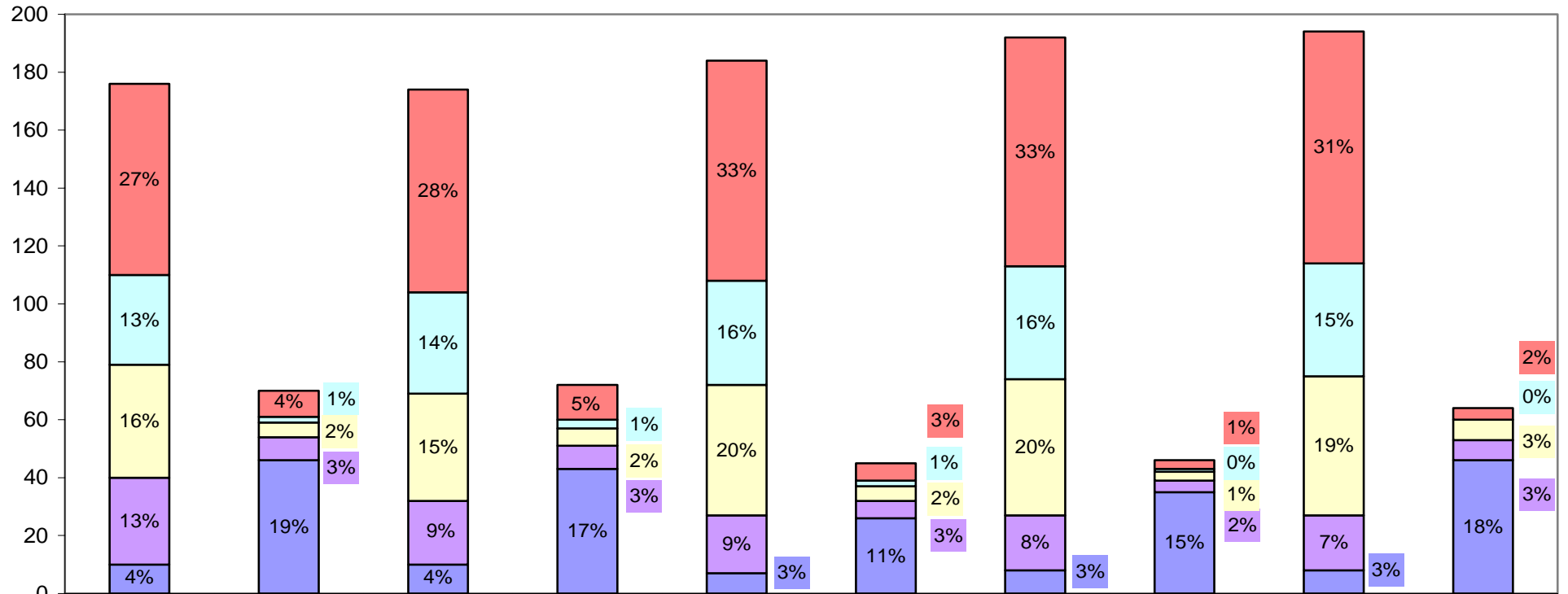
As at 31 January, 166 criminal appeals were on hand, up from 118 in December.

There were 50 new criminal appeals received in December, down from 85 in December. There were 2 disposals in January, significantly down from the 92 disposals in December.

The number of estimated hearing days required to dispose of the appeals on hand at the end of January is 56 days, compared with 40 days at the end of December.

High Court Criminal Jury Trials

Age of Trials - 30 September 2007 to 31 January 2008



	As at 30/9/07 - to trial date	As at 30/9/07 - no trial date	As at 31/10/07 to trial date	As at 31/10/07 no trial date	As at 30/11/07 to trial date	As at 30/11/07 no trial date	As at 31/12/07 to trial date	As at 31/12/07 no trial date	As at 31/01/08 to trial date	As at 31/01/08 no trial date
> 18 months	66	9	70	12	76	6	79	3	80	4
15-18 months	31	2	35	3	36	2	39	1	39	0
12-15 months	39	5	37	6	45	5	47	3	48	7
9-12 months	30	8	22	8	20	6	19	4	19	7
< 9 months	10	46	10	43	7	26	8	35	8	46

Throughput and Outstanding Workload for High Court Criminal Jury Trials - February 2007 to January 2008																				
Court	Opening Balance	New Business	Retrials Directed	Transfers In	Warrants Executed	Number of Cases Disposed			Warrants Issued	Transfers out	Merged/ Deleted	Hung Juries	Mis-trials	Closing Balance	Age of Outstanding Cases - Months					Estimated Hearing Days
						Heard	Before the day	On the day							< 3	3-6	6-9	9-12	> 12	
Auckland	97	154	9	0	0	61	56	11	2	8	14	5	0	103	0	3	12	16	72	722
Whangarei	13	17	1	1	0	9	4	6	1	1	0	0	0	11	0	0	5	2	4	33
Rotorua	29	42	-	0	2	20	8	3	4	2	0	0	0	36	0	7	11	8	10	187
Gisborne	3	4	-	2	0	2	2	2	0	0	0	0	0	3	0	0	0	0	3	17
New Plymouth	2	8	-	0	0	3	1	1	1	0	0	0	0	4	0	1	0	1	2	15
Hamilton	33	35	2	1	1	15	16	9	1	1	3	1	0	26	0	5	4	6	11	118
Auckland Circuit	177	260	12	4	3	110	87	32	9	12	17	6	0	183	0	16	32	33	102	1,092
Wellington	29	34	2	0	0	21	13	5	0	0	1	1	0	24	0	1	4	7	12	142
Napier	11	21	1	1	0	9	4	3	1	1	0	1	0	15	0	2	4	3	6	86
Palmerston North	6	8	2	0	0	2	3	2	0	0	0	2	0	7	0	0	3	0	4	34
Wanganui	3	5	-	0	0	3	1	0	0	1	1	0	0	2	0	0	0	0	2	9
Nelson	4	5	-	1	0	1	3	0	0	0	2	0	0	4	0	0	0	1	3	41
Blenheim	1	2	-	0	0	1	0	0	0	0	0	0	0	2	0	0	2	0	0	8
Wellington Circuit	54	75	5	2	0	37	24	10	1	2	4	4	0	54	0	3	13	11	27	320
Christchurch	14	25	-	0	0	8	13	0	0	0	1	0	0	17	0	3	7	3	4	120
Timaru	2	-	-	0	0	0	2	0	0	0	0	0	0	0	0	0	0	0	0	0
Dunedin	4	6	1	0	0	1	6	0	0	0	0	0	0	4	0	0	3	0	1	83
Invercargill	2	4	-	0	0	3	2	1	0	0	0	0	0	0	0	0	0	0	0	0
Greymouth	3	-	-	0	0	3	0	0	0	0	0	0	0	0	0	0	0	0	0	0
Christchurch Circuit	25	35	1	0	0	15	23	1	0	0	1	0	0	21	0	3	10	3	5	203
NATIONAL TOTAL	256	370	18	6	3	162	134	43	10	14	22	10	0	258	0	22	55	47	134	1,615

Notes:

- 1) Transfer out refers to the transfer of another trial within the same Jurisdiction and a transfer of a trial to another Jurisdiction.
- 2) In calculating the closing balance for an individual court, the cases transferred out are considered to be disposed.
- 3) Remanded in custody status is collected at the time of committal only.



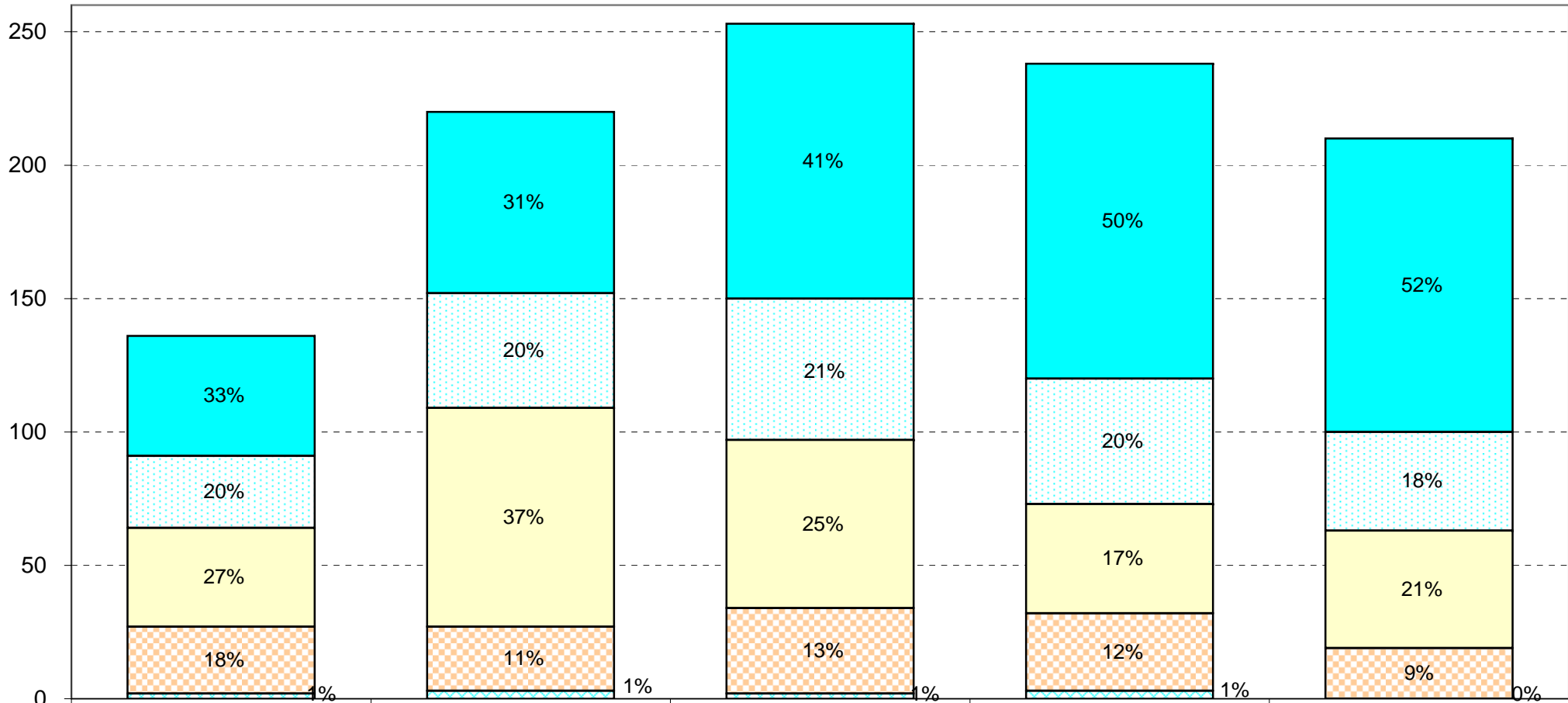
Court	Throughput and Outstanding Workload for High Court Criminal Jury Trials -														January 2008					(Manual)
	Opening Balance	New Business	Retrials Directed	Transfers In	Warrants Executed	Number of Cases Disposed			Warrants Issued	Transfer out	Merged/ Deleted	Hung Juries	Mis-trials	Closing Balance	Age of Outstanding Cases - Months					Estimated Hearing Days
						Heard	Before the day	On the day							< 3	3-6	6-9	9-12	> 12	
Auckland	94	11	0	0	0	0	0	0	0	1	1	0	0	103	0	3	12	16	72	722
Whangarei	10	1	0	0	0	0	0	0	0	0	0	0	0	11	0	0	5	2	4	33
Rotorua	33	3	0	0	0	0	0	0	0	0	0	0	0	36	0	7	11	8	10	187
Gisborne	3	0	0	0	0	0	0	0	0	0	0	0	0	3	0	0	0	0	3	17
New Plymouth	4	0	0	0	0	0	0	0	0	0	0	0	0	4	0	1	0	1	2	15
Hamilton	22	4	0	0	0	0	0	0	0	0	0	0	0	26	0	5	4	6	11	118
Auckland Circuit	166	19	0	0	0	0	0	0	0	1	1	0	0	183	0	16	32	33	102	1092
Wellington	23	1	0	0	0	0	0	0	0	0	0	0	0	24	0	1	4	7	12	142
Napier	15	0	0	0	0	0	0	0	0	0	0	0	0	15	0	2	4	3	6	86
Palmerston North	7	0	0	0	0	0	0	0	0	0	0	0	0	7	0	0	3	0	4	34
Wanganui	2	0	0	0	0	0	0	0	0	0	0	0	0	2	0	0	0	0	2	9
Nelson	4	0	0	0	0	0	0	0	0	0	0	0	0	4	0	0	0	1	3	41
Blenheim	2	0	0	0	0	0	0	0	0	0	0	0	0	2	0	0	2	0	0	8
Wellington Circuit	53	1	0	0	0	0	0	0	0	0	0	0	0	54	0	3	13	11	27	320
Christchurch	16	1	0	0	0	0	0	0	0	0	0	0	0	17	0	3	7	3	4	120
Timaru	0	0	0	0	0	0	0	0	0	0	0	0	0	0	0	0	0	0	0	0
Dunedin	3	1	0	0	0	0	0	0	0	0	0	0	0	4	0	0	3	0	1	83
Invercargill	0	0	0	0	0	0	0	0	0	0	0	0	0	0	0	0	0	0	0	0
Greymouth	0	0	0	0	0	0	0	0	0	0	0	0	0	0	0	0	0	0	0	0
Christchurch Circuit	19	2	0	0	0	0	0	0	0	0	0	0	0	21	0	3	10	3	5	203
NATIONAL TOTAL	238	22	0	0	0	0	0	0	0	1	1	0	0	258	0	22	55	47	134	1615

Notes:

- 1) Transfer out refers to the transfer of another trial within the same Jurisdiction and a transfer of a trial to another Jurisdiction.
- 2) In calculating the closing balance for an individual court, the cases transferred out are considered to be disposed.
- 3) All numbers have been manually calculated in the absence of CMS reports



High Court Criminal Jury Trials
Ages of Cases on Hand



	As at 30 June 2005	As at 30 June 2006	As at 30 June 2007	As at 31 December 2007	As at 31 January 2008
■ > 12 months	45	68	103	118	110
■ 9-12 months	27	43	53	47	37
■ 6-9 months	37	82	63	41	44
■ 3-6 months	25	24	32	29	19
■ < 3 months	2	3	2	3	0

Throughput and Outstanding Workload for High Court Civil Cases - February 2007 to January 2008								
Court	Opening Balance	New Cases	Number of Cases Actioned			Closing Balance	Estimated Hearing Days	
			Heard	Before the day	On the day		January 07	January 08
Auckland	193	453	156	191	4	295	971	1,636
Whangarei	7	16	6	5	1	11	29	44
Rotorua	13	40	6	21	6	20	45	87
Gisborne	3	2	2	1	-	2	8	4
New Plymouth	8	20	12	3	7	6	10	17
Hamilton	12	48	16	14	-	30	25	114
Auckland Circuit	236	579	198	235	18	364	1,087	1,901
Wellington	101	173	103	76	-	95	476	503
Napier	6	16	3	3	8	8	14	29
Palmerston North	5	11	8	2	3	3	13	16
Wanganui	2	3	3	1	-	1	14	1
Nelson	5	14	8	3	-	8	6	35
Blenheim	5	8	6	3	-	4	24	17
Wellington Circuit	124	225	131	88	11	119	547	601
Christchurch	26	87	41	37	3	32	136	120
Timaru	1	1	-	1	-	1	2	3
Dunedin	4	18	8	6	-	8	4	25
Invercargill	5	6	3	4	-	4	16	13
Greymouth	0	1	1	-	-	0	-	-
Christchurch Circuit	36	113	53	48	3	45	158	161
NATIONAL TOTAL	396	917	382	371	32	528	1,792	2,662

Throughput and Outstanding Workload for High Court Civil Cases - January 2008								
Court	Opening Balance	New Cases	Number of Cases Actioned			Closing Balance	Estimated Hearing Days	
			Heard	Before the day	On the day		Last Month	This Month
Auckland	301	13	-	19	-	295	1,662	1,636
Whangarei	11	-	-	-	-	11	45	44
Rotorua	19	1	-	-	-	20	87	87
Gisborne	2	-	-	-	-	2	5	4
New Plymouth	6	-	-	-	-	6	17	17
Hamilton	22	8	-	-	-	30	74	114
Auckland Circuit	361	22	-	19	-	364	1,889	1,901
Wellington	99	4	3	5	-	95	512	503
Napier	7	1	-	-	-	8	29	29
Palmerston North	1	2	-	-	-	3	10	16
Wanganui	1	-	-	-	-	1	1	1
Nelson	8	-	-	-	-	8	35	35
Blenheim	3	1	-	-	-	4	16	17
Wellington Circuit	119	8	3	5	-	119	602	601
Christchurch	30	2	-	-	-	32	108	120
Timaru	1	-	-	-	-	1	3	3
Dunedin	7	1	-	-	-	8	23	25
Invercargill	3	1	-	-	-	4	10	13
Greymouth	0	-	-	-	-	0	-	-
Christchurch Circuit	41	4	-	-	-	45	144	161
NATIONAL TOTAL	521	34	3	24	-	528	2,636	2,662

Throughput and Outstanding Workload for High Court Criminal Appeal Cases - February 2007 to January 2008								
Court	Opening Balance	New Cases	Number of Cases Actioned			Closing Balance	Estimated Hearing Days	
			Heard	Before the day	On the day		January 07	January 08
Auckland	46	153	143	15	5	36	14.5	18.0
Whangarei	7	38	28	3	1	13	1.4	3.2
Rotorua	21	110	107	9	-	15	8.5	7.0
Gisborne	4	16	11	3	-	6	2.0	1.5
New Plymouth	0	15	4	3	5	3	-	1.5
Hamilton	8	63	51	14	2	4	4.9	0.4
Auckland Circuit	86	395	344	47	13	77	31.30	31.60
Wellington	27	81	81	-	-	27	8.5	8.0
Napier	2	22	14	1	4	5	1.0	2.0
Palmerston North	5	32	28	3	1	5	1.1	1.2
Wanganui	3	23	21	1	-	4	0.5	1.0
Nelson	1	22	15	1	-	7	0.3	1.3
Blenheim	0	6	3	1	2	0	-	-
Wellington Circuit	38	186	162	7	7	48	11.4	13.5
Christchurch	18	194	172	12	0	28	5.7	7.9
Timaru	3	19	18	2	0	2	0.6	0.6
Dunedin	6	48	34	13	3	4	1.2	1.0
Invercargill	3	36	29	4	1	5	0.6	1.0
Greymouth	1	5	4	0	0	2	1.0	0.4
Christchurch Circuit	31	302	257	31	4	41	9.1	10.9
NATIONAL TOTAL	155	883	763	85	24	166	51.8	56.0

Throughput and Outstanding Workload for High Court Criminal Appeals - January 2008								
Court	Opening Balance	New Cases	Number of Cases Actioned			Closing Balance	Estimated Hearing Days	
			Heard	Before the day	On the day		Last Month	This Month
Auckland	27	9	-	-	-	36	11.0	18.0
Whangarei	12	1	-	-	-	13	3.0	3.2
Rotorua	8	7	-	-	-	15	3.3	7.0
Gisborne	0	6	-	-	-	6	-	1.5
New Plymouth	2	1	-	-	-	3	1.3	1.5
Hamilton	2	2	-	-	-	4	0.4	0.4
Auckland Circuit	51	26	-	-	-	77	19.0	31.6
Wellington	24	3	-	-	-	27	8.0	8.0
Napier	5	-	-	-	-	5	2.0	2.0
Palmerston North	5	-	-	-	-	5	1.2	1.2
Wanganui	2	2	-	-	-	4	0.5	1.0
Nelson	3	4	-	-	-	7	0.8	1.3
Blenheim	0	-	-	-	-	0	-	-
Wellington Circuit	39	9	-	-	-	48	12.5	13.5
Christchurch	17	12	1	-	-	28	5.7	7.9
Timaru	1	1	-	-	-	2	0.5	0.6
Dunedin	4	1	-	-	1	4	1.0	1.0
Invercargill	5	-	-	-	-	5	1.0	1.0
Greymouth	1	1	-	-	-	2	0.2	0.4
Christchurch Circuit	28	15	1	-	1	41	8.4	10.9
NATIONAL TOTAL	118	50	1	-	1	166	39.9	56.0

Throughput and Outstanding Workload for High Court Civil & Family Appeals - February 2007 to January 2008								
Court	Opening Balance	New Cases	Number of Cases Actioned			Closing Balance	Estimated Hearing Days	
			Heard	Before the day	On the day		January 07	January 07
Auckland	26	98	72	12	1	39	20.5	46.0
Whangarei	5	10	10	3	1	1	2.5	1.0
Rotorua	2	16	10	2	4	2	1.0	1.5
Gisborne	0	-	-	-	-	0	-	-
New Plymouth	0	6	2	-	-	4	-	2.5
Hamilton	12	25	12	8	-	17	15.5	17.0
Auckland Circuit	45	155	106	25	6	63	39.5	68.0
Wellington	64	65	72	33	-	24	49.7	24.5
Napier	2	14	12	2	-	2	1.5	1.0
Palmerston North	0	12	6	3	-	3	-	2.0
Wanganui	1	2	1	2	-	0	1.0	-
Nelson	1	3	2	-	-	2	0.5	0.9
Blenheim	0	-	-	-	-	0	-	-
Wellington Circuit	68	96	93	40	-	31	52.7	28.4
Christchurch	13	19	24	5	-	3	15.4	3.0
Timaru	0	1	-	-	-	1	-	0.6
Dunedin	3	5	6	2	-	0	3.6	-
Invercargill	1	5	4	1	-	1	0.6	1.0
Greymouth	0	-	-	-	-	0	-	-
Christchurch Circuit	17	30	34	8	-	5	19.6	4.6
NATIONAL TOTAL	130	281	233	73	6	99	111.8	101.0

Throughput and Outstanding Workload for High Court Civil & Family Appeals - January 2008								
Court	Opening Balance	New Cases	Number of Cases Actioned			Closing Balance	Estimated Hearing Days	
			Heard	Before the day	On the day		Last Month	This Month
Auckland	41	-	1	1	-	39	52	46
Whangarei	1	-	-	-	-	1	1.0	1.0
Rotorua	2	-	-	-	-	2	1.5	2
Gisborne	0	-	-	-	-	0	-	-
New Plymouth	2	2	-	-	-	4	1.50	2.5
Hamilton	16	1	-	-	-	17	13.0	17.0
Auckland Circuit	62	3	1	1	-	63	69.0	68.0
Wellington	21	3	-	-	-	24	22.0	24.5
Napier	1	1	-	-	-	2	0.5	1.0
Palmerston North	3	-	-	-	-	3	2.0	2.0
Wanganui	1	-	-	1	-	0	0.5	-
Nelson	2	-	-	-	-	2	0.9	0.9
Blenheim	0	-	-	-	-	0	-	-
Wellington Circuit	28	4	-	1	-	31	25.9	28.4
Christchurch	3	-	-	-	-	3	3.0	3.0
Timaru	1	-	-	-	-	1	0.6	0.6
Dunedin	0	-	-	-	-	0	-	-
Invercargill	1	-	-	-	-	1	1.0	1.0
Greymouth	0	-	-	-	-	0	-	-
Christchurch Circuit	5	-	-	-	-	5	4.6	4.6
NATIONAL TOTAL	95	7	1	2	-	99	99.5	101.0

High Court Business On Hand Summary

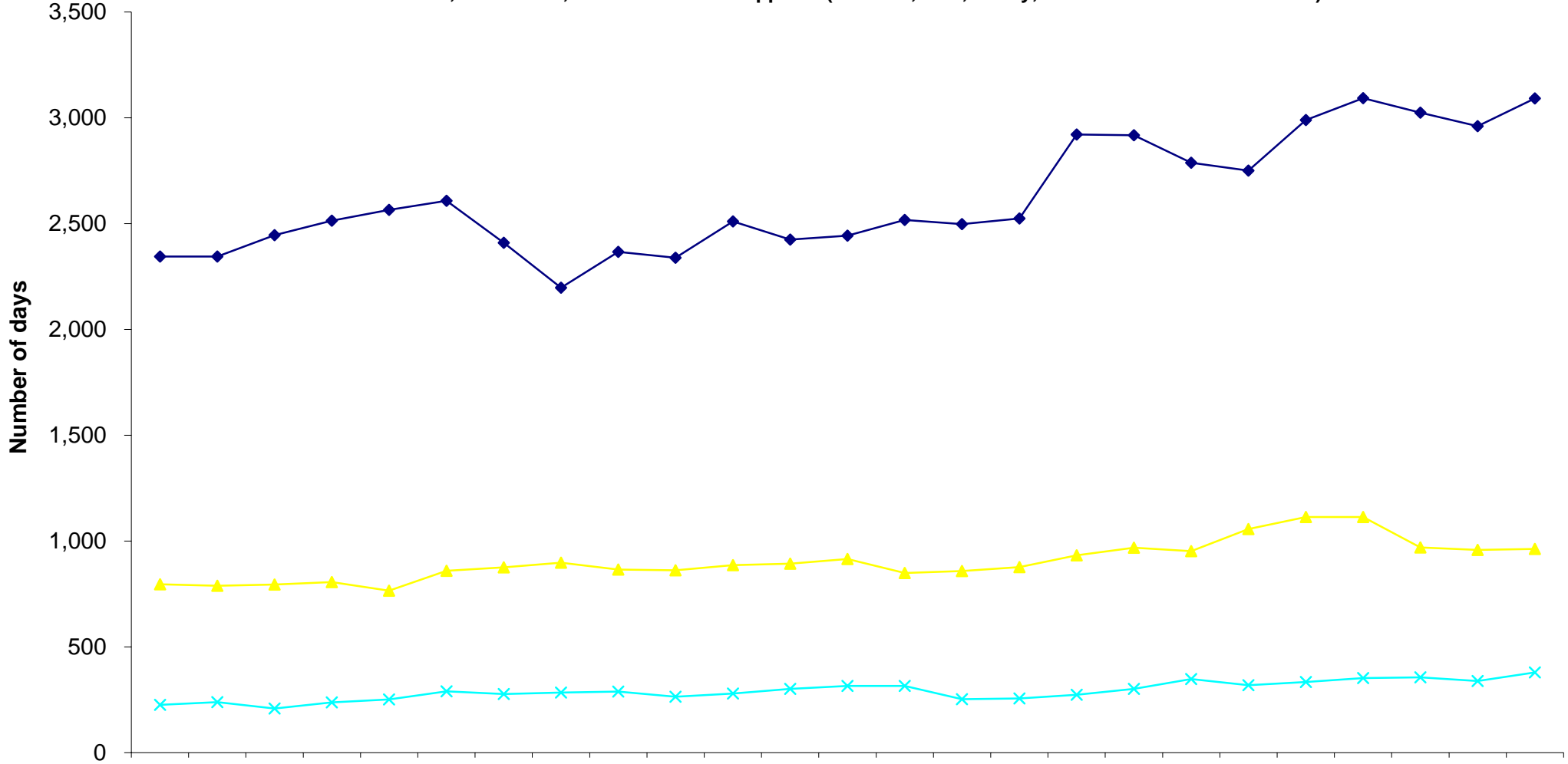
Comparative Quarterly Figures for the Year Ending 31 December 2007 and
Comparative Monthly Figures for the Four Months to 31 January 2008

ESTIMATED SITTING DAYS								
Work on hand in estimated sitting days for all criminal trials, civil cases, cases stated and appeals (criminal, civil, family, tribunals and administrative)								
High Court	Quarterly				Months			
	Dec-06	Mar-07	Jun-07	Sep-07	Oct-07	Nov-07	Dec-07	Jan-08
Auckland	1,749.2	1,850.7	2,316.7	2,463.1	2,512.2	2,421.6	2,393.0	2,423.0
Whangarei	93.6	98.4	85.7	62.8	65.3	86.7	79.3	80.7
Gisborne	20.0	34.5	26.0	28.0	24.0	23.0	22.0	22.6
Rotorua	243.0	242.0	238.0	209.5	273.5	267.0	250.3	280.0
New Plymouth	37.0	40.4	50.4	33.1	23.7	36.0	34.3	35.5
Hamilton	282.0	231.3	200.8	192.8	194.3	189.6	181.4	249.4
Auckland Circuit	2,424.8	2,497.3	2,917.6	2,989.3	3,093.0	3,023.9	2,960.3	3,091.2
Wellington	709.0	682.0	704.1	817.1	819.3	700.6	680.9	677.7
Palmerston North	48.2	31.7	32.7	44.6	42.4	42.2	47.6	53.6
Napier	53.5	62.0	98.5	111.5	112.0	109.5	117.5	118.0
Wanganui	22.5	42.0	47.5	24.5	24.0	12.0	10.5	10.5
Nelson	37.6	8.6	53.3	82.3	92.2	81.9	77.7	78.2
Blenheim	22.0	32.0	32.8	33.8	24.3	24.0	24.0	25.0
Wellington Circuit	892.8	858.3	968.9	1,113.8	1,114.2	970.2	958.2	963.0
Christchurch	237.4	195.0	218.1	222.6	261.5	235.5	230.5	250.7
Greymouth	10.0	10.0	1.0	1.6	1.3	0.8	0.2	0.4
Dunedin	23.0	19.7	45.7	96.9	82.6	114.2	92.4	109.4
Timaru	11.7	10.0	9.2	3.5	3.5	3.6	4.1	4.2
Invercargill	19.8	18.4	28.0	9.2	3.8	2.2	11.6	14.6
Christchurch Circuit	301.9	253.1	302.0	333.8	352.7	356.3	338.8	379.3
NATIONAL TOTAL	3,619.5	3,608.7	4,188.5	4,436.9	4,559.9	4,350.4	4,257.3	4,433.5

High Court Business on Hand Summary

Estimated Sitting Days

for all criminal trials, civil cases, cases stated and appeals (criminal, civil, family, tribunals and administrative)



	Jan-06	Feb-06	Mar-06	Apr-06	May-06	Jun-06	Jul-06	Aug-06	Sep-06	Oct-06	Nov-06	Dec-06	Jan-07	Feb-07	Mar-07	Apr-07	May-07	Jun-07	Jul-07	Aug-07	Sep-07	Oct-07	Nov-07	Dec-07	Jan-08
--	--------	--------	--------	--------	--------	--------	--------	--------	--------	--------	--------	--------	--------	--------	--------	--------	--------	--------	--------	--------	--------	--------	--------	--------	--------

◆ Auckland Circuit	2,344.4	2,344.4	2,446.0	2,513.8	2,565.4	2,607.5	2,409.8	2,197.6	2,366.3	2,339.0	2,510.0	2,424.8	2,443.4	2,517.0	2,497.3	2,524.0	2,921.3	2,917.6	2,787.2	2,750.9	2,989.3	3,093.0	3,023.9	2,960.3	3,091.2
▲ Wellington Circuit	796.0	788.7	794.5	806.4	765.8	859.3	875.7	897.6	865.1	862.4	886.3	892.8	915.2	849.3	858.3	877.6	932.3	968.9	952.4	1,056.8	1,113.8	1,114.2	970.2	958.2	963.0
× Christchurch Circuit	225.7	238.8	209.3	237.8	251.4	290.6	277.8	284.4	289.0	264.3	279.7	301.9	315.2	315.4	253.1	256.3	274.2	302.0	347.6	319.6	333.8	352.7	356.3	338.8	379.3